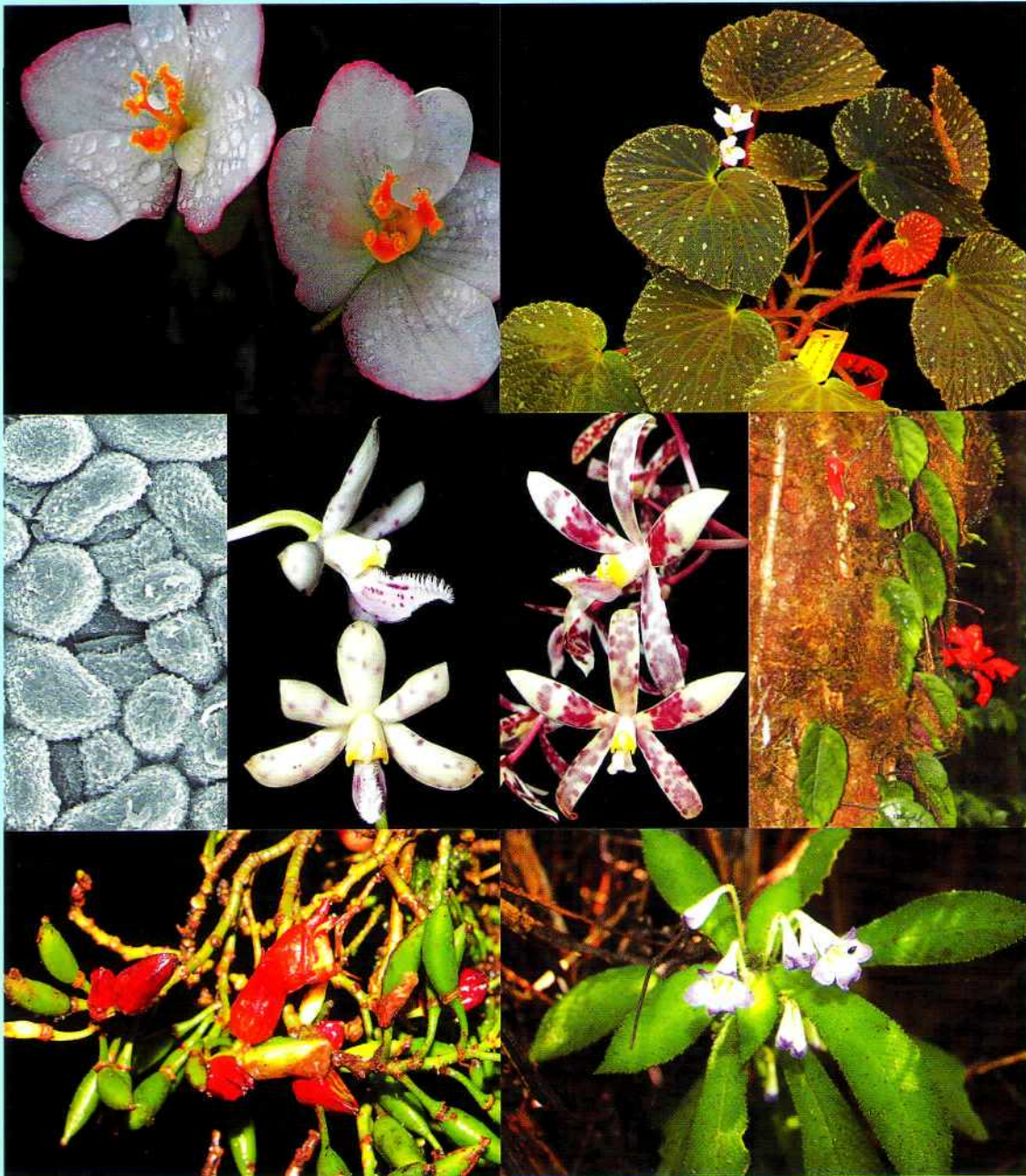




# REINWARDTIA

A JOURNAL ON TAXONOMIC BOTANY, PLANT SOCIOLOGY AND ECOLOGY

ISSN 0034 – 365 X



2014 14 (1)

# REINWARDTIA

A JOURNAL ON TAXONOMIC BOTANY,  
PLANT SOCIOLOGY AND ECOLOGY

Vol. 14(1): 1-248, December 23, 2014

## Chief Editor

Kartini Kramadibrata (Mycologist, Herbarium Bogoriense, Indonesia)

## Editors

Dedy Darnaedi (Taxonomist, Herbarium Bogoriense, Indonesia)

Tukirin Partomihardjo (Ecologist, Herbarium Bogoriense, Indonesia)

Joeni Setijo Rahajoe (Ecologist, Herbarium Bogoriense, Indonesia)

Marlina Ardiyani (Taxonomist, Herbarium Bogoriense, Indonesia)

Topik Hidayat (Taxonomist, Indonesia University of Education, Indonesia)

Eizi Suzuki (Ecologist, Kagoshima University, Japan)

Jun Wen (Taxonomist, Smithsonian Natural History Museum, USA)

## Managing Editor

Himmah Rustiami (Taxonomist, Herbarium Bogoriense, Indonesia)

Lulut Dwi Sulistyarningsih (Taxonomist, Herbarium Bogoriense, Indonesia)

Secretary

Endang Tri Utami

## Layout Editor

Deden Sumirat Hidayat

Medi Sutiyatno

## Illustrators

Subari

Wahyudi Santoso

Anne Kusumawaty

Correspondence on editorial matters and subscriptions for Reinwardtia should be addressed to:

HERBARIUM BOGORIENSE, BOTANY DIVISION,  
RESEARCH CENTER FOR BIOLOGY- INDONESIAN INSTITUTE OF SCIENCES  
CIBINONG SCIENCE CENTER, JLN. RAYA JAKARTA - BOGOR KM 46,  
CIBINONG 16911, P.O. Box 25 Cibinong  
INDONESIA  
PHONE (+62) 21 8765066; Fax (+62) 21 8765062  
E-MAIL: reinwardtia@mail.lipi.go.id

1	1
2	3 3 4
4	4

Cover images: 1. *Begonia holosericeoides* (female flower and habit) (Begoniaceae; Ardi *et al.*); 2. Abaxial cuticles of *Alseodaphne rhododendropsis* (Lauraceae; Nishida & van der Werff); 3. *Dipodium puspitae*, *Dipodium purpureum* (Orchidaceae; O'Byrne); 4. *Agalmyla exannulata*, *Cyrtandra coccinea* var. *celebica*, *Codonoboea kjellbergii* (Gesneriaceae; Kartonegoro & Potter).

The Editors would like to thanks all reviewers of volume 14(1):

- Abdulrohman Kartonegoro - Herbarium Bogoriense, Bogor, Indonesia  
Altafhusain B. Nadaf - University of Pune, Pune, India  
Amy Y. Rossman - Systematic Mycology & Microbiology Laboratory USDA-ARS, Beltsville, USA  
Andre Schuiteman - Royal Botanic Gardens, Kew, UK  
Ary P. Keim - Herbarium Bogoriense, Bogor, Indonesia  
Barry Conn - Royal Botanic Gardens National Herbarium of New South Wales, Sydney, Australia  
Dato' Abdul Latiff Mohamad - Universiti Kebangsaan Malaysia, Bangi, Selangor, Malaysia  
Daniel Potter - Department of Plant Sciences, University of California, Davis, California, USA  
Deby Arifiani - Herbarium Bogoriense, Bogor, Indonesia  
Ferry J. W. Slik - University of Brunei Darussalam, Brunei  
Henti H. Rachmat - Conservation and Rehabilitation Research and Development Center, Bogor, Indonesia  
Ian M. Turner - Royal Botanic Gardens, Kew, UK  
Iskandar Z. Siregar - Bogor Agricultural University, Bogor, Indonesia  
Jay H. Bernstein - Kingsborough Community College, Brooklyn, New York, USA  
Jens G. Rohwer - University of Hamburg, Hamburg, Germany  
Joan Pereira - SAN Herbarium, Sabah Forestry Department, Sabah, Malaysia  
Kuswata Kartawinata - Herbarium Bogoriense, Bogor, Indonesia  
Lars H. Schmidt - University of Copenhagen, Copenhagen, Denmark  
Mark Hughes - Royal Botanic Gardens, Edinburgh, UK  
Masahiro Kato - Kyoto University, Kyoto, Japan  
Nuril Hidayati - Herbarium Bogoriense, Bogor, Indonesia  
Ong Poh Teck - Forest Research Institute Malaysia, Kepong, Malaysia  
Peter C. van Welzen - National Herbarium Netherlands, Leiden University Branch, Leiden, Netherlands  
Reuben Nilus - Sabah Forestry Department, Sabah, Malaysia  
Rugayah - Herbarium Bogoriense, Bogor, Indonesia  
Ruth Kiew - Forest Research Institute of Malaysia, Kepong, Malaysia  
Uwe Braun - Institut für Biologie Bereich Geobotanik und Botanischer Garten, Halle (Saale), Germany  
Yasuaki Sato - Osaka-Sangyo University, Osaka, Japan

## FLORISTIC DIVERSITY AND STRUCTURAL CHARACTERISTICS OF MANGROVE FOREST OF RAJA AMPAT, WEST PAPUA, INDONESIA

Received January 13, 2013; accepted August 12, 2014

### SUHARDJONO PRAWIROATMODJO

Herbarium Bogoriense, Botany Division, Research Center for Biology-LIPI, Cibinong Science Center, Jln. Raya Jakarta-Bogor Km. 46, Cibinong 16911, Bogor, Indonesia. E-mail: suhardjono@bogor.net.

### KUSWATA KARTAWINATA

Integrative Research Center, The Field Museum, 1400 Lake Shore Drive, Chicago, IL 60605, USA and Herbarium Bogoriense, Botany Division, Research Center for Biology-LIPI, Cibinong Science Center, Jln. Raya Jakarta-Bogor Km. 46, Cibinong 16911, Bogor, Indonesia. E-mail: kkjak@indo.net.id.

### ABSTRACT

PRAWIROATMODJO, S. & KARTAWINATA, K. 2014. Floristic diversity and structural characteristics of the mangrove forests of Raja Ampat, West Papua, Indonesia. *Reinwardtia* 14(1):171 – 180. — We studied the floristic composition and structure of mangrove forests and mangrove species distribution at the Raja Ampat Regency, West Papua. We sampled the forests using (10×10 m) quadrats to record trees and saplings laid out contiguously along 9 transects of 60 – 450 m long, stretching perpendicularly from the coastlines or riverbanks to the landward borders. Seedlings were sampled using a 1×1 m subplot nested in each quadrat. The transects were established on the islands of Batanta (6), Salawati (2) and Waigeo (1). Within quadrats and transects we recorded 17 mangrove species of trees with density of 768 stems/ha and basal area of 37.82 m<sup>2</sup>/ha and tree height of 10 – 30 m. Two species possessed the highest importance value (IV), frequency, density and basal area i.e. *Rhizophora apiculata* (IV = 168.06%) and *Bruguiera gymnorrhiza* (IV = 67.18%). They also showed the highest similarity in their distribution, indicating highest degree of association. The mangrove at Raja Ampat may, therefore, be designated as the *Rhizophora apiculata* – *Bruguiera gymnorrhiza* association. Other species with highest degree of distributional similarities but with low densities, basal areas and importance values were *Barringtonia racemosa*, *Excoecaria agallocha*, *Hibiscus tiliaceus*, *Inocarpus fagifera*, *Lumnitzera littorea* and *Sterculia shillinglawii*, of which four of them are not true mangrove species, usually growing on less saline and more solid soils. The floristic composition of the transects in the three islands showed relatively high similarities of about 70% and at higher similarities the transects in Batanta Island formed four groups, Salawati Island two groups and Waigeo Island one group. The Bray-Curtis polar ordination resulted in four groups of transects, which were related to the habitat conditions and the length of the transects. Species diversity in the islands was very low, where the Shannon diversity index ranged from 0.19 to 0.64 giving the average of 0.42. *Rhizophora apiculata* and *Bruguiera gymnorrhiza* were regenerating well and in the future they will remain dominant. The mangrove forests of the Raja Ampat Islands by any means should be maintained as green belts and protected from all kinds of destruction and should be made into conservation areas in order to sustain its ability to provide ecological services and non-destructive economic benefits.

**Key words:** *Rhizophora apiculata* – *Bruguiera gymnorrhiza* association, mangrove, Raja Ampat Islands, West Papua.

### ABSTRAK

PRAWIROATMODJO, S. & KARTAWINATA, K. 2014. Diversitas floristik dan karakteristik struktur hutan mangrove di Raja Ampat, Papua Barat, Indonesia. *Reinwardtia* 14(1):171 – 180. — Penelitian struktur dan komposisi tumbuhan mangrove serta distribusi jenis mangrove telah dibuat di Kabupaten Raja Ampat, Papua Barat. Hutan dicuplik dengan sembilan transek dengan panjang 60 – 450 m yang diletakkan tegak lurus garis pantai atau tepi sungai hingga mencapai batas daratan. Setiap transek dibagi menjadi anak petak berukuran 10×10 m yang diletakkan menerus untuk merekam pohon dan belta. Semai dicuplik dengan anak petak berukuran 1×1 m yang diletakkan menyarang di setiap petak. Transek dibuat di Batanta (6), Salawati (2) dan Waigeo (1). Dalam transek dan petak tercatat 17 jenis pohon mangrove dengan kerapatan 768 pohon/ha dan area dasar 37.82 m<sup>2</sup>/ha serta tinggi pohon 10 – 30 m. Dua jenis yang memiliki nilai kepentingan (NK), frekuensi, kerapatan dan area dasar tertinggi adalah *Rhizophora apiculata* (NK = 168.06%) dan *Bruguiera gymnorrhiza* (NK = 67.18%). Dua jenis tersebut memiliki kesamaan sebaran, yang menunjukkan derajat asosiasi yang tinggi. Dengan nilai kepentingan dan kesamaan sebaran tersebut sebagai kriteria, mangrove di Raja Ampat dapat disebut sebagai Asosiasi *Rhizophora apiculata* – *Bruguiera gymnorrhiza*. Jenis lain yang memiliki kerapatan, area dasar dan nilai penting rendah adalah *Barringtonia racemosa*, *Excoecaria agallocha*, *Hibiscus tiliaceus*, *Inocarpus fagifera*, *Lumnitzera littorea* dan *Sterculia shillinglawii* dan empat di antaranya adalah bukan mangrove sejati yang biasanya tumbuh pada tanah agak padat dengan kadar garam rendah. Komposisi jenis dari transek di tiga pulau menunjukkan kesamaan yang relatif tinggi, sekitar 70%. Dengan kesamaan yang tinggi transek di Pulau Batanta membentuk empat kelompok, Pulau Salawati dua kelompok dan Pulau Waigeo satu kelompok. Ordinalasi polar Bray-Curtis menghasilkan empat kelompok transek, yang terkait dengan kondisi habitat

dan panjang transek. Diversitas jenis di pulau-pulau di Raja Ampat sangat rendah, seperti ditunjukkan oleh indeks diversitas Shannon yang berkisar dari 0.19 sampai 0.64 dengan nilai rata-rata 0.42. *Rhizophora apiculata* dan *Bruguiera gymnorrhiza* mempunyai regenerasi yang baik dan di masa depan mereka akan tetap dominan. Dengan segala upaya hutan mangrove Raja Ampat hendaknya tetap dipertahankan sebagai jalur hijau mangrove dan sebagai areal konservasi untuk mempertahankan kemampuannya sebagai penyedia jasa ekologi dan manfaat ekonomi tidak destruktif.

**Kata kunci:** Asosiasi *Rhizophora apiculata* *Bruguiera gymnorrhiza*, mangrove, Kepulauan Raja Ampat, Papua Barat.

## INTRODUCTION

Indonesia as an *archipelago state*, consisting of more than 17.508 islands with a coastline of 81.000 km long (Soegiarto, 1984), has a very extensive mangrove forests. The mangroves provide live supports for a diversity of marine biota, such as providing breeding sites, nursery grounds, feeding sites and protection. Therefore, mangrove ecosystems have received a great deal of scientific attention.

The most extensive mangrove forests in Indonesia are found in Papua, covering a total area of 1.634.003 ha (hectares) or 50.4 % of the total mangroves of Indonesia (Saputro *et al.*, 2009). In the Raja Ampat Regency, they cover a total area of 28.050 ha (Saputro *et al.*, 2009), occurring on the Waigeo Island (6.843 ha), Batanta Island (785 ha), Kofiau Island (279 ha), Misool Island (8.093 ha) and the Salawati Island (4.258 ha) (Anynomous, 2006). The mangrove forests that have been designated as conservation areas in Papua cover only 148.000 ha.

The mangroves throughout the country, including in Raja Ampat, are continually threatened by deforestation and clearance, particularly the conversion to schrimp and fish ponds. Therefore, conserving mangroves is a must, as sanctioned by several government decrees, The Presidential Decree No. 32/1990, for instance, requires local governments to establish Mangrove Green Belt. In several national parks, undisturbed mangroves along with other undisturbed ecosystems constitute the core zones.

Elsewhere the floristic composition and structure of mangrove forests have been well studied and reported in numerous publications and proceedings of workshop and symposia (*e.g.* Soemodihardjo *et al.*, 1991). An account of the mangrove forests of Papua, treated as part of the entire island of New Guinea, is briefly presented by Alongi (2007). Various studies and reviews on Raja Ampat (McKenna *et al.*, 2002; Palomares & Heymans 2006; Webb, 2005) barely mentioned mangrove forests. We, therefore, know very little about the species composition and structure of mangrove

forests on the islands in the Raja Ampat Regency, and so far only two records are available. Anynomus (2006) registered 25 true mangrove species and 27 mangrove-associated species in Raja Ampat. Takeuchi (2003) did a community-level reconnaissance on the mangrove along the banks of the Gam and Kasin rivers and described the mangrove in Raja Ampat as being sparse and poor in species compared to the New Guinea mainland. In the present study, therefore, our investigation focus on floristic and structural aspects, which are important for establishing conservation areas and subsequent management and monitoring, in particular in view of the threat from increasing ecotourism development and conversion for economic and physical development in the regency.

## STUDY SITE AND METHODS

The Raja Ampat Islands (Fig. 1) are geographically located on 2°25'N - 4°25'S and on 130° - 132°55'E, comprising four main islands, *i.e.* Batanta (Batanta Island), Misool (Misool Island), Salawati (Salawati Island) and Waigeo (Waigeo Island). The area has a seasonal climate, showing a dry season from October to March with monthly rainfall of 170 mm and a wet season from April to September with monthly rainfall of 270 mm (McKenna *et al.*, 2002). The ecosystems around the islands consist of coral reefs, mangroves and sea-grass beds, which experience maximum daily tide fluctuations of 1.8 m with the average fluctuation of 0.9-1.3 m (McKenna *et al.*, 2002).

Sampling of mangrove forests using transect methods were undertaken at Yenana in Selat Sagawin district on Batanta, at Samate in Salawati Utara district on Salawati and at Kalitoko on Waigeo (Fig. 1). We established nine transects, stretching perpendicularly from the coastlines or riverbanks to the inland edges of the forests bordering with the dryland. Each transect was 10 m wide and its length and geographic position were as follows:

- (1) At Yenanas on Batanta, six transects were established and the overall distance between Transect 1 and Transect 6 was 17,500 m.

Transect 1 was 60 m long, located in a forest bordering an open sea at 0°51'0.6"S and 130°5'43.4"E; Transect 2 was 70 m long, located in a forest along a river at 0°50'58.7"S and 130°51'42.9"E, Transect 3 was 180 m long, located in a forest on an estuary at 0°50'58.7"S and 130°51'42.9"E, Transect 4 was 110 m long, located in a forest along a river at 0°51'9.2"S and 130°51'11.0"E, Transect 5 was 200 m long, located in a forest bordering an open sea at 0°50'9.6"S and 130°53'12.4"E and Transect 6 was 200 m long, located in a forest bordering an open sea at 0°50'20.3"S and 130°53'3.4"E.

- (2) At Samate on Salawati, two transects, with the length of 200 m each, were established in a forest on an estuary at 0°59'25.4"S and 131°4'7.1"E and 0°58'18.4"S and 131°4'52.7" E.
- (3) At Kalitoko on Waigeo one transect with the length of 450 m was established in a forest located on a bay at 0°14'19.3" S & 130°48'25.6" E.

Each transect was divided into (10×10 m) plots to record trees with diameters at breast height (DBH) of ≥ 10 cm and saplings with DBH of 2-9.9 cm and a (1×1 m) subplot was nested within each plot to record seedlings with DBH of < 2 cm. If stilt roots were present the diameters were measured at 10 cm above stilt roots. The height of trees and saplings were estimated. The Importance Value of each species at tree and sapling stages was

calculated by summing up the Relative Density (RD), Relative Basal Area (RBA) and Relative Frequency (RF). Basal area was used to measure the dominance. Biodiversity professional Version 2.0 (McAleece *et al.*, 1997) was used for Bray-Curtis Cluster Analysis with Sorensen similarity to construct grouping of transects and species and to calculate Shannon diversity index. Bray-Curtis polar ordination of transects was performed using PC-ORD (Peck, 2010). All individuals within the plots and subplots were identified to species. Species present outside the transects were also listed so as to obtain a general information on mangrove flora of the study sites but they were not included in the transect data analysis. Voucher specimens were collected and identified at the Herbarium Bogoriense, Research Center for Biology, Indonesian Institute of Sciences at Cibinong, Bogor. The water depths on the riverside, seaside and the inland ends of each transect was measured with a measuring stake. The percentage of the canopy gaps along each transect was estimated.

**RESULTS AND DISCUSSION**

**Floristic composition**

Mangrove forests on the Raja Ampat Islands, occurring along the coastal areas, rivers and estuaries extending to the inland with variable thickness, were mostly still in good conditions. Table 1 shows the results of floristic and structural analyses within the transects on Batanta, Salawati and Waigeo, where we recorded 17 species of 12 families, of which 11 were true mangrove species. Six true mangrove species occurred in the three islands, six species (mostly non mangrove species) were found on Waigeo, two species were present in Batanta and Waigeo, two species were recorded only in Salawati and one species was found only in Batanta. The species have been registered in the IUCN Redlist of Threatened Species Version 2013.2 as least concerned with decreasing population ([www.iucnredlist.org](http://www.iucnredlist.org), accessed on 23 December 2013). Species present within and outside the transects are listed in Appendix 1 to give a general idea of the flora of the study sites.

The mangrove forests on the three islands in Raja Ampat were characterized by species no 1-6 in Table 1, with IV of 3.21–168.06%, BA of 0.08–24.71 m<sup>2</sup> and D of 4–463 trees/ha. The similarity indices for distribution of species are presented in Fig. 2. *Rhizophora apiculata* and *Bruguiera gymnorrhiza* had the highest degree of similarity of distribution in the quadrats within the transects (similarity of 90%). Except for *Heritiera littoralis*,



Fig. 1. The study sites on Waigeo, Batanta, and Salawati in the Raja Ampat Regency (Kabupaten), West Papua, Indonesia

Fig. 2. Dendrogram (based on tree density) of tree species distribution in transects on Batanta, Salawati and Waigeo in the Raja Ampat Islands using BioDiversityProfessional Version 2 (McAleece *et al.* 1997).

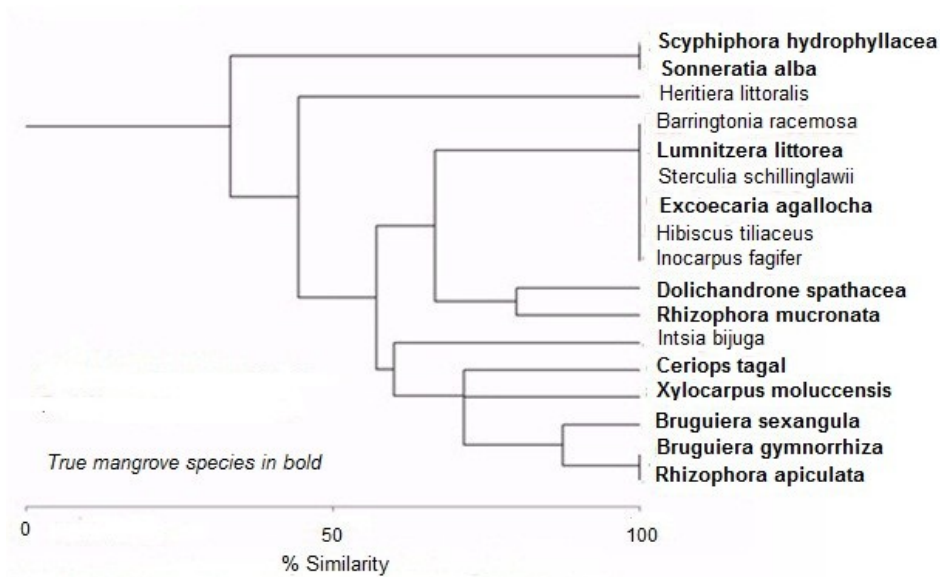


Table 1. Area (BA=m<sup>2</sup>/ha) and Importance Value (IV=%) of true mangrove (TM) and non-mangrove (NM) tree species in the transects in the mangrove forests on Batanta Density (D=trees/ha), Basal, Salawati and Waigeo. The species have been registered in the IUCN Redlist of Threatened Species. Version 2013.2 as least concerned with decreasing population (www.iucnredlist.org. Accessed on 23 December 2013).

No	Species	Status	Batanta			Salawati			Waigeo		
			D	BA	IV	D	BA	IV	D	BA	IV
1	<i>Rhizophora apiculata</i>	TM	623	32.14	172.02	278	25.64	175.71	304	10.36	146.70
2	<i>Bruguiera gymnorrhiza</i>	TM	205	13.20	74.76	25	5.50	94.09	27	0.50	13.69
3	<i>Bruguiera sexangula</i>	TM	70	2.72	26.67	218	0.45	9.21	113	2.73	54.98
4	<i>Xylocarpus moluccensis</i>	TM	45	1.07	14.42	8	0.02	1.82	42	1.08	30.76
5	<i>Rhizophora mucronata</i>	TM	18	0.92	4.27	13	0.55	8.15	9	0.46	6.57
6	<i>Ceriops tagal</i>	TM	5	0.09	2.46	33	0.03	1.83	4	0.12	2.68
7	<i>Barringtonia racemosa</i>	NM	-	-	-	-	-	-	2	0.02	1.74
8	<i>Excoecaria agallocha</i>	TM	-	-	-	-	-	-	2	0.15	2.43
9	<i>Hibiscus tiliaceus</i>	NM	-	-	-	-	-	-	7	0.12	3.09
10	<i>Inocarpus fagifer</i>	NM	-	-	-	-	-	-	11	2.02	17.81
11	<i>Lumnitzera littorea</i>	TM	-	-	-	-	-	-	2	0.03	1.79
12	<i>Sterculia schillinglawii</i>	NM	-	-	-	-	-	-	2	0.08	2.08
13	<i>Dolichandrone spathacea</i>	TM	2	0.07	0.97	-	-	-	22	0.92	13.93
14	<i>Intsia bijuga</i>	NM	6	0.17	2.14	-	-	-	2	0.02	1.77
15	<i>Heritiera littoralis</i>	NM	2	0.44	2.29	-	-	-	-	-	-
16	<i>Sonneratia alba</i>	TM	-	-	-	8	0.54	5.56	-	-	-
17	<i>Scyphiphora hydrophyllacea</i>	TM	-	-	-	5	0.05	3.64	-	-	-
<b>Sum</b>			<b>977</b>	<b>50.81</b>	<b>300</b>	<b>588</b>	<b>32.79</b>	<b>300</b>	<b>551</b>	<b>18.6</b>	<b>300</b>
Number of species			9			9			14		
Number of transects and area sampled (m <sup>2</sup> )			6 (8200)			2 (4000)			1 (4500)		

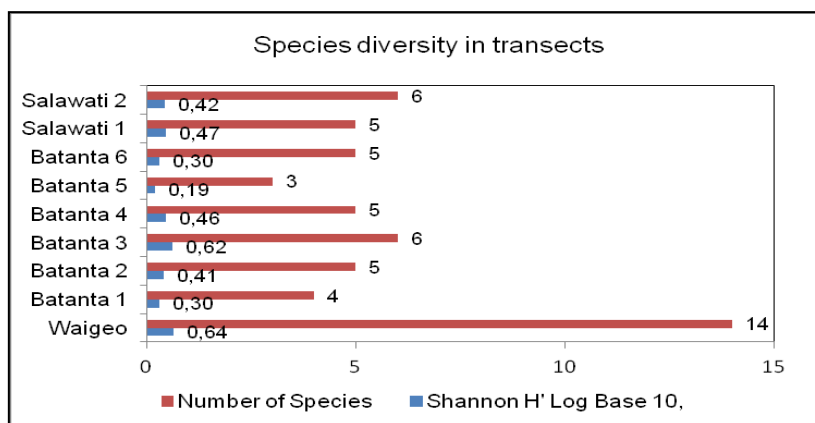


Fig. 3. Number of species and Shannon diversity indices in transects at Batanta, Salawati and Waigeo. Shannon diversity indices were calculated using BioDiversity Professional Version 2 (McAleece *et al.*, 1997).

*Sonneratia alba* and *Scyphiphora hydrophyllacea*, other species had relatively high similarities of distribution (similarity of > 50%) *Rhizophora apiculata* was also a species with highest Importance Value (168.06%), followed by *Bruguiera gymnorrhiza* (67.18%). Based on the similarity of distribution and high importance values, the two species could be used as character species for naming mangrove forest at Raja Ampat as *Rhizophora apiculata*–*Bruguiera gymnorrhiza* association. It slightly differed from the finding of Takeuchi (2007) who did a community-level reconnaissance on the mangrove along the banks of the Gam and Kasin rivers, and named the forest as the *Bruguiera gymnorrhiza*–*Rhizophora mucronata* association. The areas were not covered in the present study. As a whole the mangrove in Raja Ampat had a low species diversity as indicated by the Shannon diversity indices that range from 0.19 at Batanta transect 5 to 0.64 at Waigeo transect (Fig. 3), giving the average of 0.42.

The dendrogram of species composition based on tree density among transects (Fig. 4) shows a relatively high floristic similarities (>65%). At 69% and higher similarities, transects from groups 3 on Batanta Island, 2 on Salawati Island and 1 on Waigeo. Clustering seems attributed to differing number of species in the transect as well as due to the presence of certain species, whose presence were restricted to each transect (Table 1). The occurrence of *Lumnitzera littorea*, *Excoecaria agallocha*, *Inocarpus fagifer*, *Hibiscus tiliaceus*, *Sterculia shillinglawii* and *Barringtonia racemosa* were restricted to Waigeo Island, *Sonneratia alba* and *Scyphiphora hydrophyllacea* to Salawati Island and *Heritiera littoralis* to Batanta Island. These species show also separate clustering in the dendrogram (Fig. 2).

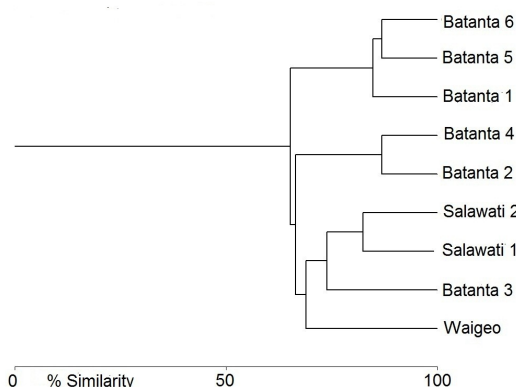


Fig. 4. Dendrogram of floristic similarities based on tree density among transects in Batanta, Salawati and Waigeo, using BioDiversity Professional Version 2 (McAleece *et al.*, 1997)

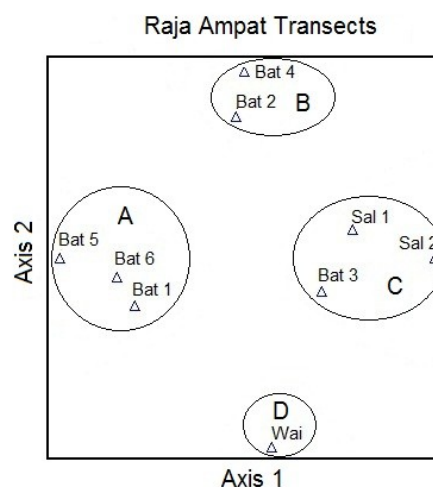


Fig. 5. Bray-Curtis polar Ordination using PC-ORD (Peck 2010) showing the grouping (A–D) of the Batanta transects (Bat 1 – Bat 6), Salawati transects (Sal 1 and Sal 2) and Waigeo transect (Wai).



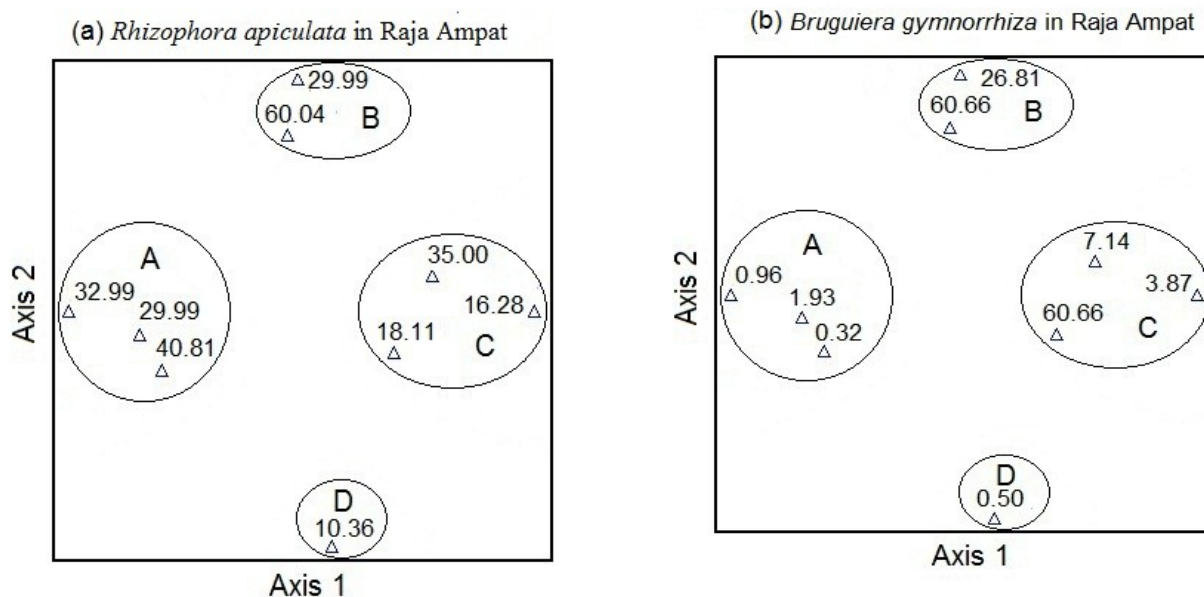


Fig. 6. Basal Area (m<sup>2</sup>/ha) of (a) *Rhizophora apiculata* and (b) *Bruguiera gymnorrhiza* in transects of Groups A, B, C, and D, plotted over the the ordination diagram

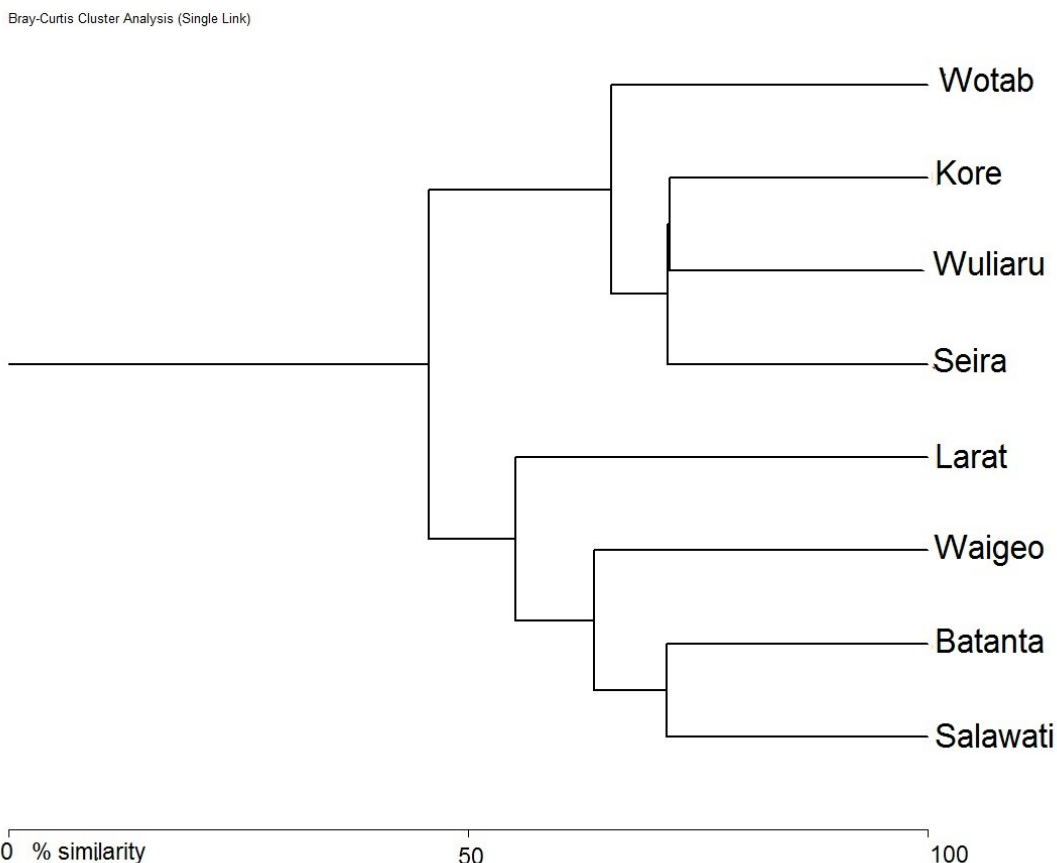


Fig. 7. Comparison of floristic composition of mangrove forests in the Raja Ampat Islands (Batanta, Salawati and Waigeo) with those on small islands in Southeast Maluku (Larat, Seira, Wotab, Wuliaru and Kore). (Data extracted from Pramudji, 1987; Puluhamuny, 2003; Suhardjono & Hapid, 2011) using BiodivPro (McAleece *et al.*, 1997).

The Bray-Curtis polar ordination (Fig. 5) resulted in similar grouping of transects as that of the cluster analysis shown in Fig. 4 above. The groups are related to the habitat conditions and the length of the transects. Group A consisted of transects with average length of 153 m, whose outer ends were located on the forests bordering with the open sea. The water depths at the seaside ends of the transects were 25-35 cm and the inland ends were 5-10 cm. The average canopy gaps were about 60%. In Group B the average transect length was 90 m, with the outer ends located on the riverbanks. The water depths on the riverbank sides of the transects were 20-30 cm and at the inland side were 5-10 cm. The average canopy gaps were about 30%. In Group C the average transect length was 193 m and located at the estuaries. The water depths at the riverbank sides were 10-20 cm and at the inland sides were 5 cm. The average canopy gaps were about 20%. Group D consists of only one transect of 450 m long, located in the forest at the bay. The water depth at the bay side of the transect was 70 cm and at the inland side was 5 cm. The average canopy gaps were about 10%. *Rhizophora apiculata* was consistently dominant in most transects and all groups (Fig. 6a), while *Bruguiera gymnorrhiza* was co-dominant in transects 2 and 4 of the Group 2 and dominant in transect 3 of the Group C (Fig. 6b).

Fig. 7 shows the comparison of floristic composition of mangroves in the Raja Ampat Islands (Batanta Island, Salawati and Waigeo) and small islands in Southeast Maluku (Larat, Seira, Wotab, Wuliaru and Kore) with Bray and Curtis cluster analysis using Sorensen similarity formula and making use of density data of transects with lengths of 190-390 m available in Pramudji (1987), Puluhamuny (2003) and Suhardjono & Hapid (2011). The floristic composition differed a great deal as indicated by similarities among islands which varied between 25 and 75% despite limited number of species occurring in mangroves. The mangrove of the Raja Ampat Islands floristically very close to that in Larat Island, having similarities of 55.16%. Within the restricted number of species in the mangrove environment, each island had apparently its own set of floristic combination, that characterized the community. The mangrove forests have been traditionally used by local communities as a source of family income, through harvest of fish, prawns, plants for medicinal uses, timber and firewood. Toteng (2004) recorded 12 mangrove species used by the local communities in Waren II village, Waropen Regency.

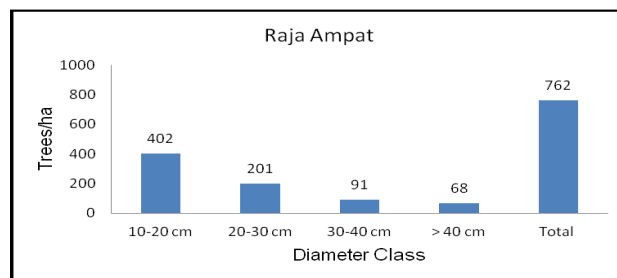


Fig. 8. Diameter class distribution and the density of trees in the Raja Ampat Islands as calculated from data at Batanta, Salawati and Waigeo.

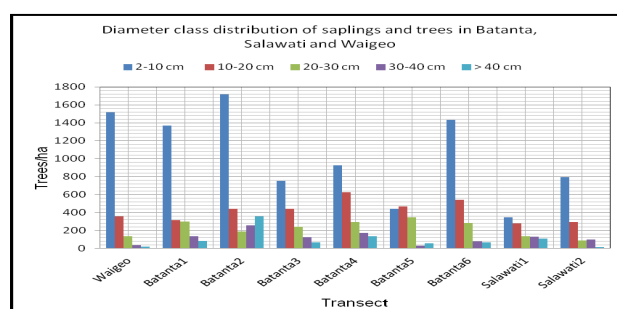


Fig. 9. Diameter class distribution of saplings and trees in transects on Batanta, Salawati and Waigeo in the Raja Ampat Islands, West Papua.

### Structure

We described the forest structure in terms of horizontal spatial distribution, diameter class distribution and vertical height distribution. All trees recorded in the quadrats were classified according to diameter classes (Fig. 8). It revealed that the majority of the trees (52.76%) were in the 10-20 cm diameter class and the diameters of the rests were distributed in the the diameters > 20 cm. It was true also for each island (Fig. 9), where the trees of this diameter class were dominant but varied in number from 280 trees/ha in Salawati 1 to 627 trees/ha in Batanta 4. Fig. 9 shows also that plants at the sapling stage were very abundant in each transect, ranging in number from 280 trees/ha in Salawati 1 to 1714 trees/ha in Batanta 2. Trees with diameters >40 cm were rare, where the highest number was recorded in Batanta 2 (357 trees/ha) and the lowest was in Salawati 2 (15 trees/ha). *Rhizophora apiculata* and *Bruguiera gymnorrhiza* dominated the largest diameters.

Vertically the forests in the transects studied were dominated by trees with heights of 5-15 m, totalling 1254 trees/ha (69.67%) (Fig. 10). Trees with the heights of 5-10 m and >15 m were equally abundant, amounting to 561 trees/ha (31.03%) and 546 trees/ha (30.20%), respectively, while the understory at height of 2-5 m was very poor totaling only 8 trees/ha (0.44%). Thus the forests were solidly occupied by trees with height of 5-15 m and diameters of 10-30 cm. The species with height >

15 m were *Bruguiera gymnorrhiza*, *B. sexangula*, *Ceriops tagal*, *Dolichandrone spathacea*, *Excoecaria agallocha*, *Heritiera littoralis*, *Inocarpus fagifer*, *Intsia bijuga*, *Lumnitzera littorea*, *Rhizophora apiculata*, *Rhizophora mucronata*, *Sonneratia alba* and *Xylocarpus moluccensis*. The tallest trees with height > 40 m recorded in the transects were *Bruguiera gymnorrhiza*, *B. sexangula*, *Heritiera littoralis*, *Inocarpus fagifer*, *Rhizophora apiculata* and *Sonneratia alba*. The dominant species in each height class, however, was *Rhizophora apiculata* with *Bruguiera gymnorrhiza* as the co-dominant.

**Regeneration**

We investigated the tree seedling community in relation to regeneration. Population structure, dominance and distribution of tree species and the number of individuals in each species at tree, sapling and seedling stages are indicators of the ability of a forest to regenerate itself and to maintain its survival, stability and sustainability. A stable forest ecosystem would have optimum density and the individuals of each species are normally well spread along diameter classes. Table 2 presents the number of individuals/ha in seedling, sapling and tree stages of five main species. It is clear that the two main species, *Rhizophora apiculata* and *Bruguiera gymnorrhiza* had very good regeneration and the regeneration of, *Bruguiera sexangula* and *Rhizophora mucronata* was poorer. *Xylocarpus moluccensis* was not regenerating at all as indicated by the absence of its seedlings. We noted that the non-mangrove species were not regenerating in the true mangrove habitats, although seedlings and

saplings may be found in the transition area between swamp and dryland. The above account implies that in the future *Rhizophora apiculata* and *Bruguiera gymnorrhiza* will remain dominant in the mangrove forests of the Raja Ampat Islands, unless the forests experience severe disturbance, where pioneer and secondary forest species will initiate successions. In the present community pioneers and secondary species occurred insignificantly in gaps within the forests and at the periphery of the mangrove communities.

Table 2. Regeneration of five leading species in transects at Batanta, Salawati and Waigeo in the Raja Ampat Islands presented as density (number of individuals/ha) in each diameter classes.

No.	Species	Diameter Class					
		<2 cm	2-10 cm	10-20 cm	20-30 cm	30-40 cm	> 40 cm
1	<i>Rhizophora apiculata</i>	133,293	507	167	106	62	43
2	<i>Bruguiera gymnorrhiza</i>	53,832	161	91	36	11	16
3	<i>Bruguiera sexangula</i>	16,108	354	48	14	4	3
4	<i>Rhizophora mucronata</i>	2,874	898	958	419	240	-
5	<i>Xylocarpus moluccensis</i>	-	40	7	3	1	-

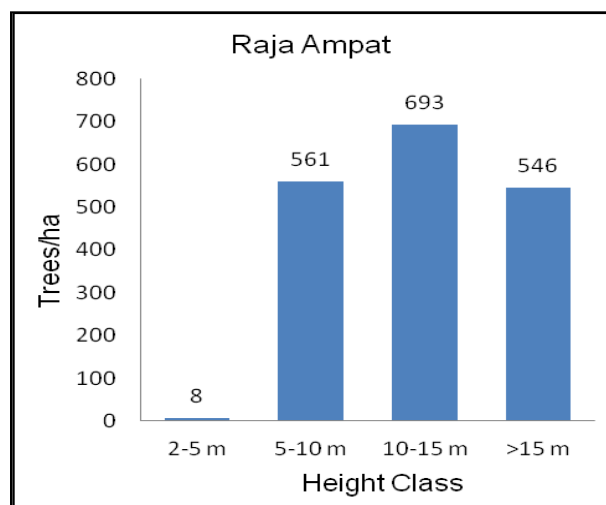


Fig. 10. Height class distribution of trees and saplings in Raja Ampat Islands as calculated from data at Batanta, Salawati and Waigeo.

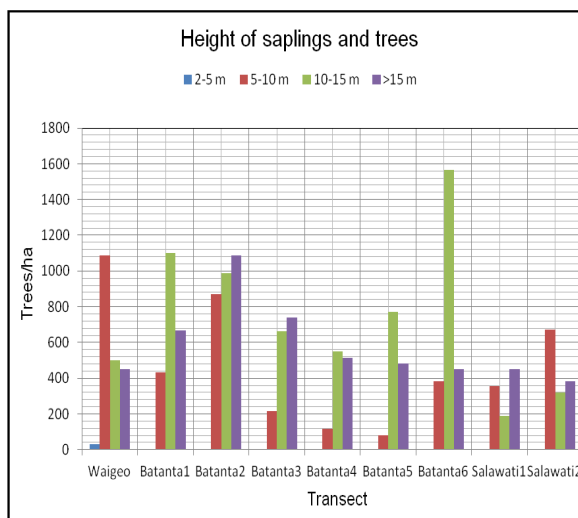


Fig. 11. Height class distribution of saplings and trees in transects at Batanta, Salawati and Waigeo in the Raja Ampat Islands

**CONCLUSION**

The mangrove forest at Raja Ampat is structurally dense with low species diversity. It is still in relatively good conditions with no apparent indication of having been severely disturbed and only natural disturbances might have taken place resulting in the gap formation in the canopy. So far no indication of significant number of secondary forest species have invaded the communities.

*Rhizophora apiculata* and *Bruguiera gymnorrhiza* jointly dominated the forest at seedling, sapling and tree stages, confirming themselves that their dynamic good regeneration ensure the species will stay in the community unless severe perturbation interferes and stimulates the successional changes to set in. The above two species were complemented by less prevalent but important species, *Bruguiera sexangula* and *Xylocarpus moluccensis*.

The mangrove forests in the Raja Ampat Islands should, by any means, be conserved, managed and maintained as the green belts, whose width should satisfy the requirements and criteria that have been developed for Papua (Wartaputra, 1991). Any attempt to convert them into other uses, should be avoided. Any disturbed sites should be restored applying the principles of accelerated natural successions.

#### ACKNOWLEDGEMENTS

We thank the Head of the Botany Division of Research Centre for Biology-LIPI and the Head of the Research Centre for Biology-LIPI for the full support to undertake the research, without which we would not be able to implement it at all. Our gratitude goes also to the local government authorities in the Mayalibit District, Salawati Utara District, Teluk Sawagin District, Yenanas Village, the Kalitoko Village and the Samate Village as well as the local communities for providing the permits and other necessary facilities to complete the field research.

#### REFERENCES

- ALONGI, D. M. 2007. Mangrove forests of Papua. In: MARSHALL, A. & BEEHLER, B. M. (Eds.), *The Ecology of Papua*, Part Two, Periplus, Singapore. Pp. 824–857.
- ANONYMOUS. 2006. *Atlas sumberdaya pesisir kabupaten Raja Ampat, provinsi Irian Jaya Barat*. Pemerintah Kabupten Raja Ampat & Konsorsium Atlas Sumberdaya Pesisir Kabupaten Raja Ampat.
- MC ALEECE, N., LAMBSHEAD, P. J. D. & PATERSON, G. L. J. 1997. Biodiversity Pro. The Natural History Museum, London
- MCKENNA, S. A., ALLEN, G. R. & SURYADI, S. (Eds.). 2002. A marine rapid assessment of the Raja Ampat Islands, Papua province, Indonesia. *RAP Bulletin of Biological Assessment* 22, Conservation Internasional, Washington, DC.
- PALOMARES, M. L. D. & HEYMANS, J. J. 2006. Historical ecology of the Raja Ampat Archipelago, Papua province, Indonesia. *Fisheries Centre Research Reports* 14( 7): 1–64.
- PECK, J. E. 2010. Multivariate analysis for community ecologists: step-by-step using PC-ORD. MJM Software Design, Gleneden Beach, OR.
- PRAMUDJI. 1987. Studi pendahuluan pada hutan mangrove di beberapa pulau Kepulauan Aru, Maluku Tenggara. In: SOERIANEGARA, I., ADISOEMARTO, S., SOEMODIHARDJO, S., HARDJOWIGENO, S., SOEDOMO, M. & ONGKOSONGO, O. S. R. (Eds.). Prosiding Seminar III Ekosistem Mangrove, Denpasar, Bali 5-8 Agustus 1986, Panitia Nasional Program MAB Indonesia- LIPI, Jakarta. Pp. 74–79. (In Indonesian).
- PULUMAHUNY, F. S. 2003. Hutan mangrove di Pulau -pulau kecil Kepulauan Yamdena, Maluku Tenggara. In: RUYITNO, PRAMUDJI & SUPANGAT, I. (Eds.). *Pesisir dan pantai Indonesia VII*. Pusat Penelitian Oseonografi-LIPI, Jakarta. Pp. 33–42. (In Indonesian).
- SAPUTRO, G. B., HARTINI, S., SUKARDJO, S., SUSANTO, A. & PONIMAN (Eds.). 2009. *Peta mangroves Indonesia*. Pusat Survey Sumber Daya Alam Laut, Badan Koordinasi Survey dan Pemetaan Nasional (BAKOSURTANAL).
- SOEGIARTO, A. 1984. The mangrove ecosystem in Indonesia: Its problems and management. In: TEAS, H. J. (Ed.). *Physiology and management of mangroves*. W. Junk Publishers, The Hague.
- SOEMODIHARDJO, S., HARDJOWIGENO, S., NAAMIN, N., ONGKOSONGO, O. S. R. & SUDOMO, M. 1991. Prosidings Seminar IV Ekosistem Mangrove. Bandar Lampung, 7-9 Agustus 1990, Panitia Nasional Program MAB Indonesia-LIPI, Jakarta.
- SUHARDJONO & HAPID, U. 2011. Hutan mangrove di Pulau Moti. In: MARYANTO, I. & SUTRISNO, H. (Eds.), *Ekologi Ternate*. Pusat Penelitian Biologi -LIPI, Bogor. Pp.199–217.
- TAKEUCHI, W. 2003. A community-level floristic reconnaissance of the Raja Ampat Islands in New Guinea. *Sida* 20: 1093–1138.
- TOTENG, A. 2004. Pemanfaatan vegetasi mangrove di kampong Waren II Distrik Waropen Bawah, Kabupaten Waropen. *Beccariana* 6(2): 71–78.
- WARTAPUTRA, S. 1991. Kebijakan pengelolaan mangrove ditinjau dari sudut konservasi. In: SOEMODIHARDJO, S., HARDJOWIGENO, S., NAAMIN, N., ONGKOSONGO, O. S. R. & SUDOMO, M. (Eds.). Prosiding Seminar IV Ekosistem Mangrove. Bandar Lampung 7-9 Agustus 1990. ), Panitia Nasional Program MAB Indonesia – LIPI, Jakarta. Pp. 17–24.
- WEBB, C. O. 2005. Vegetation of the Raja Ampat Islands, Papua, Indonesia. A report to the nature conservancy.

## APPENDIX 1. List of species occurring in the transects and their vicinity in the Raja Ampat Islands, West Papua.

In the transects and their vicinity in Batanta, Salawati and Waigeo of the Raja Ampat Islands, we listed 109 species, 83 genera and 52 families, of which only 27 were true mangrove species and the remainders were non halophytic species, growing generally in the transition areas between saline mangrove swamp and terrestrial dryland soils. We classified them into the following groups:

### Group 1: Species present in Batanta, Salawati and Waigeo

**Asclepiadaceae:** *Finlaysonia obovata* Wall.; **Asteraceae:** *Melanthera biflora* (L.) Wild; **Avicenniaceae:** *Avicennia officinalis* L.; **Calophyllaceae:** *Calophyllum inophyllum* L.; **Combretaceae:** *Lumnitzera littorea* (Jack) Voigt; **Euphorbiaceae:** *Excoecaria agallocha* L.; **Fabaceae:** *Derris trifoliata* Lour.; *Pongamia pinnata* (L.) Pierre; **Flagellariaceae:** *Flagellaria indica* L.; **Goodeniaceae:** *Scaevola taccada* (Gaertn.) Roxb.; **Lecythidaceae:** *Barringtonia asiatica* (L.) Kurz; *Barringtonia racemosa* (L.) Spreng.; **Malvaceae:** *Hibiscus tiliaceus* L.; **Meliaceae:** *Xylocarpus granatum* J. Koenig; *Xylocarpus moluccensis* (Lam.) M. Roem.; **Pandanaceae:** *Pandanus tectorius* Parkinson ex Du Roi; **Rhizophoraceae:** *Bruguiera gymnorhiza* (L.) Lam.; *Bruguiera sexangula* (Lour.) Poir.; *Ceriops tagal* (Perr.) C.B.Rob.; *Rhizophora apiculata* Blume; *Rhizophora mucronata* Lam.; **Rubiaceae:** *Scyphiphora hydrophyllacea* C.F.Gaertn.; **Sonneratiaceae:** *Sonneratia alba* Sm.; *Sonneratia caseolaris* (L.) Engl.; **Sterculiaceae:** *Heritiera littoralis* Aiton; **Verbenaceae:** *Clerodendrum inerme* (L.) Gaertn.

### Group 2. Species present in Batanta and Waigeo

**Acanthaceae:** *Acanthus ebracteatus* Vahl; **Asclepiadaceae:** *Tylophora cissoides* Blume; **Bignoniaceae:** *Dolichandrone spathacea* (L.f.) Seem.; **Combretaceae:** *Terminalia catappa* L.; **Fabaceae:** *Dalbergia candanensis* (Dennst.) Prain; *Intsia bijuga* (Colebr.) Kuntze; **Malvaceae:** *Thespesia populnea* (L.) Sol. ex Corrêa; **Pteridaceae:** *Acrostichum speciosum* (Fée) C. Presl; **Sapindaceae:** *Allophylus cobbe* (L.) Raesch.; **Verbenaceae:** *Teijsmanniodendron hollrungii* (Warb.) Kosterm.

### Group 3. Species present in Batanta and Salawati

**Acanthaceae:** *Acanthus ilicifolius* L.; **Aizoaceae:** *Sesuvium portulacastrum* (L.) L.; **Apocynaceae:** *Cerbera manghas* L.; **Arecaceae:** *Nypa fruticans* Wurmb; **Convolvulaceae:** *Ipomoea pes-caprae* Roth; **Fabaceae:** *Sophora tomentosa* L.; **Meliaceae:** *Xylocarpus rumphii* (Kostel.) Mabb.; **Olacaceae:** *Ximenia americana* L.; **Pandanaceae:** *Pandanus dubius* Spreng.; *Pandanus odorifer* (Forssk.) Kuntze; **Pteridaceae:** *Acrostichum aureum* L.; **Rhizophoraceae:** *Bruguiera cylindrica* (L.) Blume; *Bruguiera parviflora* (Roxb.) Wight & Arn. ex Griff.; *Rhizophora lamarckii* Montrouz.; *Rhizophora stylosa* Griff.; **Rubiaceae:** *Morinda citrifolia* L.; **Rutaceae:** *Limonia* sp.

### Group 4. Species present only in Waigeo

**Apocynaceae:** *Alyxia floribunda* Markgr.; **Araceae:** *Rhaphidophora* sp.; **Asclepiadaceae:** *Hoya lacunosa* Blume; **Asparagaceae:** *Dracaena angustifolia* (Medik.) Roxb; **Avicenniaceae:** *Avicennia marina* subsp. *australasica* (Walp.) J.Everett; **Bombacaceae:** *Camptostemon schultzei* Mast.; **Convolvulaceae:** *Ipomoea gracilis* R. Br.; **Cyatheaceae:** *Cyathea* sp.; **Cyperaceae:** *Mapania macrocephala* (Gaudich.) K.Schum.; **Dryopteridaceae:** *Tectaria zeylanica* (Houtt.) Sledge; **Ebenaceae:** *Diospyros cauliflora* Blume; **Euphorbiaceae:** *Shirakiopsis indica* (Willd.) Esser; **Fabaceae:** *Caesalpinia bonduc* (L.) Roxb.; *Caesalpinia crista* L.; *Cynometra ramiflora* L.; *Derris elegans* Benth.; *Inocarpus fagifer* (Parkinson) Fosberg; **Hernandiaceae:** *Hernandia sonora* L.; **Loganiaceae:** *Fagraea racemosa* Jack; **Meliaceae:** *Aphanamixis polystachya* (Wall.) R.Parker; **Menispermaceae:** *Arcangelisia flava* (L.) Merr.; **Moraceae:** *Artocarpus teysmannii* Miq.; **Rhizophoraceae:** *Ceriops decandra* (Griff.) W.Theob.; **Rubiaceae:** *Hydnophytum moseleyanum* Becc.; **Sterculiaceae:** *Scaphium macropodium* (Miq.) Beumée ex K.Heyne; **Tiliaceae:** *Brownlowia argentata* Kurz; **Verbenaceae:** *Premna serratifolia* L.

### Group 5. Species present only in Batanta

**Borraginaceae:** *Cordia dichotoma* G. Forst.; **Cannabaceae:** *Celtis philippensis* Blanco; **Celastraceae:** *Siphonodon* sp.; **Clusiaceae:** *Garcinia dulcis* (Roxb.) Kurz; **Fabaceae:** *Dendrolobium umbellatum* (L.) Benth.; *Mucuna bennettii* F. Muell.; **Lythraceae:** *Pemphis acidula* J. R. Forst.; **Moraceae:** *Ficus adenosperma* Miq.; *Ficus botryocarpa* Miq.; **Myrsinaceae:** *Ardisia elliptica* Thunb.; **Nyctaginaceae:** *Boerhavia diffusa* L.; **Orchidaceae:** *Coelogyne* sp.; *Dendrobium aloifolium* (Blume) Rchb. f.; **Piperaceae:** *Piper betle* L.; **Rubiaceae:** *Aidia racemosa* (Cav.) Tirveng.; *Guettarda speciosa* L.; **Rutaceae:** *Atalantia monophylla* D. C.; **Sapotaceae:** *Planchonella obovata* (R. Br.) Pierre; **Sonneratiaceae:** *Sonneratia ovata* Backer; **Thymelaeaceae:** *Phaleria perrottetiana* (Decne.) Fern.-Vill. ; **Tiliaceae:** *Grewia laevigata* Vahl; **Verbenaceae:** *Clerodendrum buchananii* (Roxb.) Walp.

### Group 6. Species present only in Salawati

**Avicenniaceae:** *Avicennia marina* (Forssk.) Vierh.; **Combretaceae:** *Lumnitzera racemosa* Willd.; **Myrsinaceae:** *Aegiceras floridum* Roem. & Schult.; **Myrtaceae:** *Osbornia octodonta* F. Muell.; **Sterculiaceae:** *Heritiera globosa* Kosterm.

### Group 7. Species present in Waigeo and Salawati

**Myrsinaceae:** *Aegiceras corniculatum* (L.) Blanco.

# INSTRUCTION TO AUTHORS

**Scope.** *Reinwardtia* is a scientific irregular journal on plant taxonomy, plant ecology and ethnobotany published in December. Manuscript intended for a publication should be written in English.

**Titles.** Titles should be brief, informative and followed by author's name and mailing address in one-paragraphed.

**Abstract.** English abstract followed by Indonesian abstract of not more than 250 words. Keywords should be given below each abstract.

**Manuscript.** Manuscript is original paper and represent an article which has not been published in any other journal or proceedings. The manuscript of no more than 200 pages by using Times New Roman 11, MS Word for Windows of A4 with double spacing, submitted to the editor through <reinwardtia@mail.lipi.go.id>. New paragraph should be indented in by 5 characters. For the style of presentation, authors should follow the latest issue of *Reinwardtia* very closely. Author(s) should send the preferred running title of the article submitted. Every manuscript will be sent to two blind reviewers.

**Identification key.** Taxonomic identification key should be prepared using the aligned couplet type.

**Nomenclature.** Strict adherence to the International Code of Botanical Nomenclature is observed, so that taxonomic and nomenclatural novelties should be clearly shown. English description for new taxon proposed should be provided and the herbaria where the type specimens area deposited should be presented. Name of taxon in taxonomic treatment should be presented in the long form that is name of taxon, author's name, year of publication, abbreviated journal or book title, volume, number and page.

**Map/line drawing illustration/photograph.** Map, line drawing illustration, or photograph preferably should be prepared in landscape presentation to occupy two columns. Illustration must be submitted as original art accompanying, but separated from the manuscript. The illustration should be saved in JPG or GIF format at least 350 pixels. Legends or illustration must be submitted separately at the end of the manuscript.

**References.** Bibliography, list of literature cited or references follow the Harvard system as the following examples.

- Journal : KRAENZLIN, F. 1913. *Cyrtandraceae* novae Philippinenses I. *Philipp. J. Sci.* 8: 163-179.  
MAYER, V., MOLLER, ML, PERRET, M. & WEBER, A. 2003. Phylogenetic position and generic differentiation of *Epithemateae* (*Gesneriaceae*) inferred from plastid DNA sequence data. *American J. Bot.* 90: 321-329.
- Proceedings : TEMU, S. T. 1995. Peranan tumbuhan dan ternak dalam upacara adat "Djoka Dju" pada suku Lio, Ende, Flores, Nusa Tenggara Timur. In: NASUTION, E. (Ed.). *Presiding Seminar dan Lokakarya Nasional Etnobotani II*. LIPI & Perpustakaan Nasional: 263-268. (In Indonesian).  
SIMBOLON, H. & MIRMANTO, E. 2000. Checklist of plant species in the peat swamp forests of Central Kalimantan, Indonesia. In: IWAKUMA *et al.* (Eds.) *Proceedings of the International Symposium on: Tropical Peatlands*. Pp. 179-190.
- Book : RIDLEY, H. N. 1923. *Flora of the Malay Peninsula* 2. L. Reeve & Co. Ltd, London.
- Part of Book : BENTHAM, G. 1876. *Gesneriaceae*. In: BENTHAM, G. & HOOKER, J. D. *Genera plantarum* 2. Lovell Reeve & Co., London. Pp. 990-1025.
- Thesis : BAIRD, L. 2002. *A Grammar of Kéo: An Austronesian language of East Nusantara*. Australian National University, Canberra. [PhD. Thesis].
- Website : [http://www.nationaalherbarium.nl/fmcollectors/k/Kostermans\\_AJGH.htm](http://www.nationaalherbarium.nl/fmcollectors/k/Kostermans_AJGH.htm). Accessed 15 February 2012.



## Reinwardtia

Published by Herbarium Bogoriense, Botany Division, Research Center for Biology,  
Indonesian Institute of Sciences

Address: Jin. Raya Jakarta-Bogor Km. 46 Cibinong 16911, P.O. Box 25 Cibinong

Telp. (+ 62) 21 8765066; Fax (+62) 21 8765062

E-mail: reinwardtia@mail.lipi.go.id

### *REINWARDTIA* Author Agreement Form

Title of article :

Name of Author(s) :

I/We hereby declare that:

- My/Our manuscript was based on my/our original work.
- It was not published or submitted to other journal for publication.
- I/we agree to publish my/our manuscript and the copyright of this article is owned by Reinwardtia.
- We have obtained written permission from copyright owners for any excerpts from copyrighted works that are included and have credited the sources in our article.

Author signature (s)

Date

---

Name

MUHAMMAD EFFENDI, TATIK CHIKMAWATI & DEDY DARNAEDI. New cytotypes of <i>Pteris ensiformis</i> var. <i>victoria</i> from Indonesia.....	133
SUZANA SABRAN, REUBEN NILUS, JOAN T. PEREIRA & JOHN BAPTIST SUGAU. Contribution of the heart of Borneo (HoB) initiative towards botanical exploration in Sabah, Malaysia.....	137
WENNI SETYO LESTARI, BAYU ADJIE, TASSANAI JARUWATANAPHAN, YASUYUKI WATANO & MADE PHARMAWATI. Molecular phylogeny of maidenhair fern genus <i>Adiantum</i> (Pteridaceae) from Lesser Sunda Islands, Indonesia based on <i>Rbcl</i> and <i>Trnl-f</i> .....	143
ELIZABETH A. WIDJAJA & DANIEL POTTER. Floristic study of Mekongga Protected Forest: towards establishment of the Mekongga National Park.....	157
YESSI SANTIKA, EKA FATMAWATI TIHURUA & TEGUH TRIONO. Comparative leaves anatomy of <i>Pandanus</i> , <i>Freycinetia</i> and <i>Sararanga</i> (Pandanaceae) and their diagnostic value.....	163
SUHARDJONO PRAWIROATMODJO & KUSWATA KARTAWINATA. Floristic diversity and structural characteristics of mangrove forest of Raj a Ampat, West Papua, Indonesia.....	171
IAN M. TURNER. A new combination in <i>Orophea</i> (Annonaceae) for <i>Uvaria nitida</i> Roxb. ex G. Don.....	181
IVAN S AVINOV. Taxonomic revision of Asian genus <i>Glyptopetalum</i> Thwaites (Celastraceae R. Br.).....	183
YUSI ROSALINA, NISYAWATI ERWIN NURDIN, JATNA SUPRIATNA & KUSWATA KARTAWINATA. Floristic composition and structure of a peat swamp forest in the conservation area of the PT National Sago Prima, Selat Panjang, Riau, Indonesia.....	193
IMAN HID AY AT & JAMJAN MEEBOON. <i>Cercospora brunfelsiicola</i> (Fungi, Mycosphaerellaceae), a new tropical Cercosporoid fungus on <i>Brunfelsia uniflora</i> .....	211
MAX VAN BALGOOY & ELIZABETH A. WIDJAJA. Flora of Bali: a provisional checklist.....	219
EKA FATMAWATI TIHURUA & INA ERLINAWATI. Leaf anatomy of <i>Pandanus</i> spp. (Pandanaceae) from Sebangau and Bukit Baka-Bukit Raya National Park, Kalimantan, Indonesia.....	223
JULIA SANG & RUTH KIEW. Diversity of <i>Begonia</i> (Begoniaceae) in Borneo - How many species are there?.....	23 3
DIAN LATIFAH, ROBERT A. CONGDON & JOSEPH A. HOLTUM. A Physiological approach to conservation of four palm species: <i>Arenga australasica</i> , <i>Calamus australis</i> , <i>Hydriastele wendlandiana</i> sa <i>Alicuala ramsayi</i> .....	237



REINWARDTIA  
Vol. 14. No. 1.2014  
CONTENTS  
Page

ABDULROKHMAN KARTONEGORO & DANIEL POTTER. The Gesneriaceae of Sulawesi VI: the species from Mekongga Mts. with a new species of <i>Cyrtandra</i> described.....	1
LIM CHUNG LU & RUTH KIEW. <i>Codonoboea</i> (Gesneriaceae) sections in Peninsular Malaysia.....	13
WISNU H. ARDI, YAYAN W. C. KUSUMA, CARL E. LEWIS, ROSNIATI A. RISNA, HARRY WIRIADINATA, MELISSA E. ABDO & DANIEL C. THOMAS. Studies on <i>Begonia</i> (Begoniaceae) of the Molucca Islands I: Two new species from Halmahera, Indonesia, and an updated description of <i>Begonia holosericea</i> .....	19
YUZAMMI, JOKO R. WITONO & WILBERT L. A. HETTERSCHIED. Conservation status of <i>Amorphophallus discophorus</i> Backer & Alderw. (Araceae) in Java, Indonesia.....	27
MOHAMMAD F. ROYYANI & JOENI S. RAHAJOE. Behind the sacred tree: local people and their natural resources sustainability.....	35
FIFI GUS DWIYANTI, KOICHI KAMIYA & KO HARADA. Phylogeographic structure of the commercially important tropical tree species, <i>Dryobalanops aromatica</i> Gaertn. F. (Dipterocarpaceae) revealed by microsatellite markers.....	43
SACHIKO NISHIDA & HENK VAN DER WERFF. Do cuticle characters support the recognition of <i>Alseodaphne</i> , <i>Nothaphoebe</i> and <i>Dehaasia</i> as distinct genera?.....	53
NURUL AMAL LATIFF, RAHAYU SUKMARIA SUKRI & FAIZAH METALI. <i>Nepenthes</i> diversity and abundance in five habitats in Brunei Damssalam.....	67
NURUL HAZLINA ZATNI & RAHAYU SUKMARIA SUKRI. The diversity and abundance of ground herbs in lowland mixed Dipterocarp forest and heath forest in Brunei Darussalam.....	73
MUHAMMAD AMIRUL AIMAN AHMAD JUHARI, NORATNI TALIP, CHE NURUL ATNI CHE AMRI & MOHAMAD RUZI ABDUL RAHMAN. Trichomes morphology of petals in some species of Acanthaceae.....	79
DIAN ROSLEINE, EIZI SUZUKI, ATIH SUNDAWIATI, WARDI SEPTIANA & DESY EKAWATI. The effect of land use history on natural forest rehabilitation at corridor area of Gunung Halimun Salak National Park, West Java, Indonesia.....	85
JULIUS KULIP. The Ethnobotany of the Dusun people in Tikolod village, Tambunan district, Sabah, Malaysia.....	101
PETER O'BYRNE. On the evolution of <i>Dipodium R. Br.</i> .....	123

Reinwardtia is a LIPI accredited Journal (517/AU2/P2MI-LIPI/04/2013)

Herbarium Bogoriense  
Botany Division  
Research Center for Biology - Indonesian Institute of Sciences  
Cibinong Science Center  
Jln. Raya Jakarta - Bogor, Km 46  
Cibinong 16911, P.O. Box 25 Cibinong  
Indonesia