

A NEW SPECIES OF LANSIUM Corr. (Meliaceae). *)

by

B. PRIJANTO **)

Lansium kostermansii B. Prijanto, *spec. nov.* — Fig,

Arbor, foliolis 3 vel 5, alternantibus vel sub-oppositis, rigide chartaceis, ovato-oblongis vel ellipticis, basi cuneatis apice acutis, costis utrinque 6—10, subtus parce pilosis, petiolulis 5 mm longis; racemis solitaribus, laxe pilosis; fructus pilosus.

Tree up to 30 m tall, up to 40 cm in diameter. Bark pale yellowish, ca 0.5 mm thick; living bark ca 3 mm thick. Branchlets slender, smooth, glabrous (young branchlets sparsely pilose, glabrescent). Petiole slender, up to 3 cm long, ca 1 mm in diameter, pilose, swollen at base; rachis up to 20 cm long, slender, pilose. Leaflets 3 or 5, alternate or sub-opposite, rigidly chartaceous, ovate-oblong or elliptical, 8—15 x 3.5—6.0 cm, base obtusely cuneate, apex acute; upper surface smooth, glabrous, midrib straight, impressed, lower surface partly pilose, midrib prominent, pilose, lateral nerves 6—10 pairs, prominulous, irregularly spaced, curved and anastomosing towards margin, secondary nerves prominulously reticulate, tertiary nerves inconspicuous; petiolule ca 5 mm long, somewhat thickened at base. Flowers unknown.

Infructescence a simple, axillary, solitary, laxly pilose, glabrescent raceme; rachis slender, 9—20 cm long. Persistent calyx lobes rotundate, glabrous, rather ciliate, 0.5—0.8 mm in diameter. Fruit 4—5-celled, pericarp 1.5—2.0 mm thick, the partitional septa subcoriaceous. Seed one in each cell, 1.5—2.5 cm long and 1.5—2.0 cm in diameter, testa chartaceous; only one to three seeds developing, the other half filled with a dirty white arillus or undeveloped seed which is edible and sweetish.

TYPUS: *Kostermans 19117* (BO).

DISTRIBUTION — Island of Sumbawa

VERNACULAR NAME — Kaju narab (W. Sumbawa).

The species is named in honour of Dr. A.J.G.H. Kostermans, who collected ample material in Sumbawa, where he recognized it immediately as an undescribed species.

*) A MSS. of *Lansium* is almost completed.

**) Assistant, Herbarium Bogoriense; h.t. Botanical Garden, Edinburgh, Scotland.

The species is closely related to *L. dubium*, from which it differs by the shape of the leaflets, and the pilosity of the fruit.

W. S u m b a w a. Mt. Batulanteh, river-gorge N. of Batudulang, alt. 500 m, April, young fr., *Kostermans 18188* (BO); *ibid.*, moist river-gorge N. of Batudulang, May, young fr., *Kostermans 18657* (A, BO, CANB, G, K, L, LE, P, US); trail from Batudulang to Pusu, alt. 800—900 m, Oct., fr., *Kostermans 19067* (BO, G, PNH, SING); trail from Batudulang to Punik, alt. 700 m, Oct., fr., *Kostermans 19109* (A, BO, K, L); rivergorge near Sg\ Lit, near Batudulang, alt. 500 m, Oct., fr., *Kostermans 19117* (BISH, BM, BO, C, CAL, K, L, NY, PNH, SING), type; rivergorge near Batudulang, alt. 600 m, Nov., fr., *Kostermans 19215* (A, BISH, BM, BO, C, K, L, LE, NY, PNH, SING, SYD); Sumbawa Kuta, alt. 850 m, June, young fr., 66. 10321 (BO, L, U).

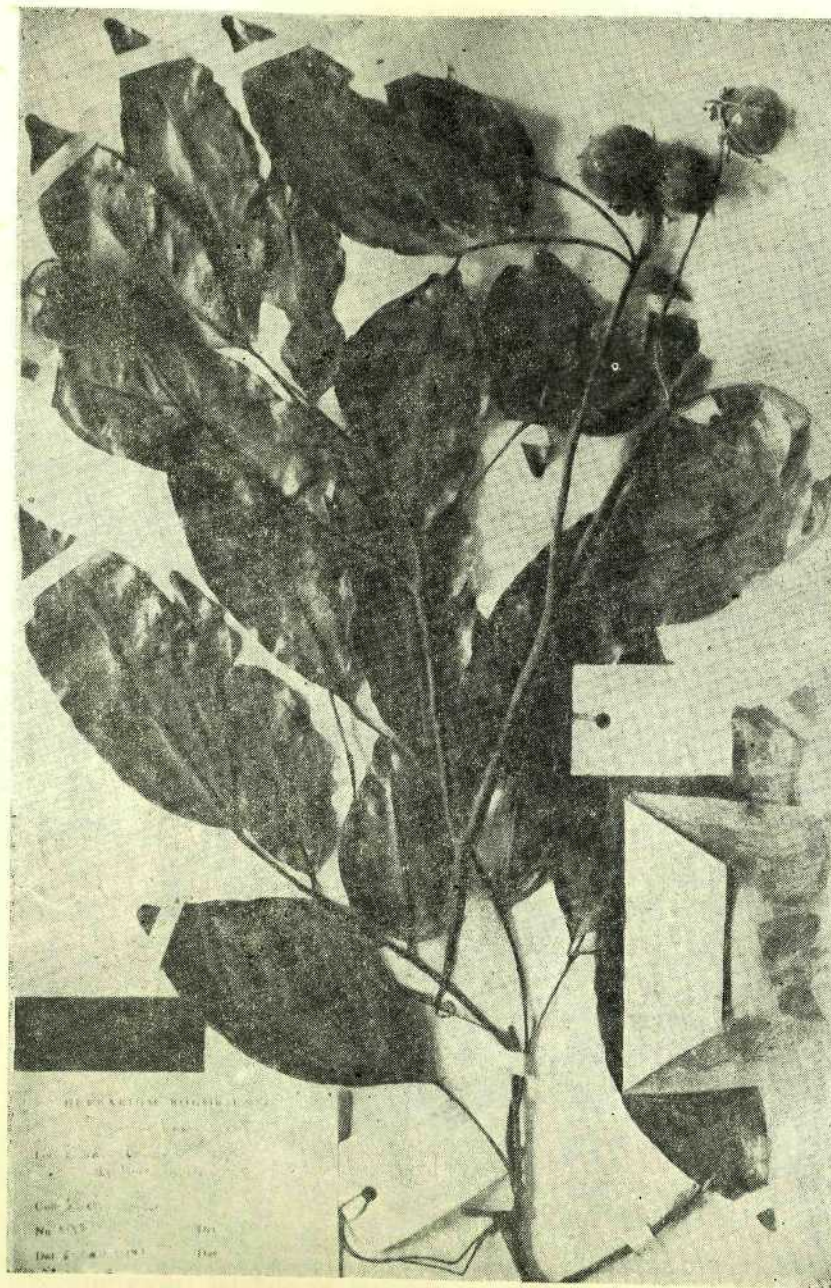


Fig. 1a. — *Lansium kostermansii* Prijanto

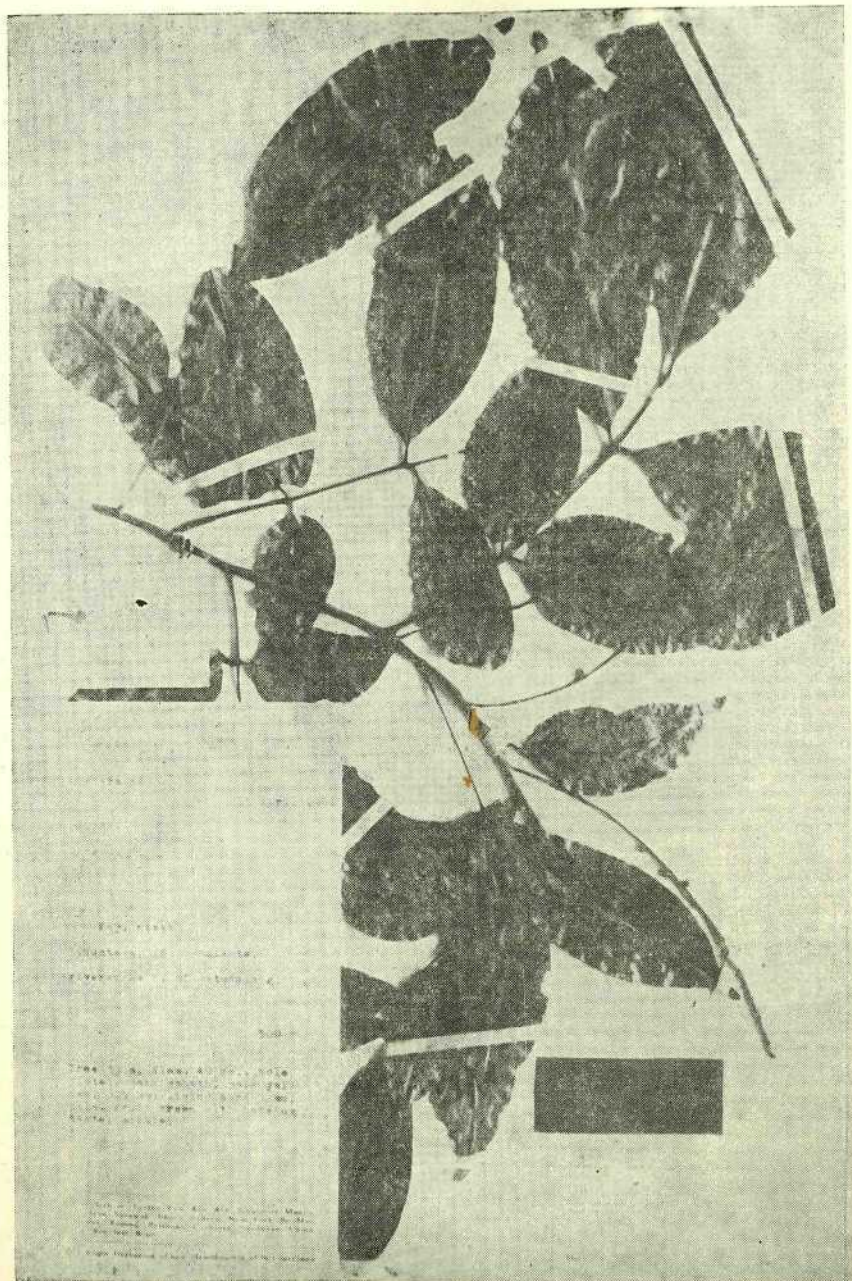


Fig. 1 b. — *Lansium kostermansii* Prijanto

A NEW SPECIES OF COLONA Cav. (Tiliaceae) *)

by

N. WIRAWAN**)

Colona kostermansiana Wirawan, *spec. nov.* — Fig.

Arbor mediocris, foliis chartaceis ad subcoriaceis lanceolatis usque ad late ovato-lanceolatis, basi plerumque symmetricis plerumque truncatis vel obtusis utraque facie stellato scabridis, nerviis lateralibus utrinque 7—11, margine denticulatis serratis vel duplo sinuato-serratis, capsulis alatis cJidftaceis obovoideis.

Tree up to 25 m high and 50 cm diam.; buttresses concave up to 1 m out, 0.5 m high; bark smooth, lenticellate, paperthin, up to 3 mm thick, brown outside, dark brown inside; living bark pale brown, dark brown after exposure, 0.7—15 mm thick. Branchlets stellate puberulent, glabrescent. Stipules early caducous, subulate, asymmetrically auriculate at base, 13 x 2 mm, stellate puberulent. Leaves chartaceous to subcoriaceous, lanceolate to broadly ovate-lanceolate, (3.0—) 9.3—20.6 (—32.5) x (1.2—) 3.4—7.5 (—13.4) cm, base symmetric, rarely asymmetric, mostly truncate or obtuse, rarely subcordate, apex acuminate (acumen up to 3.9 cm long), margin denticulate, serrate or double sinuate-serrate; both surfaces stellate scabrous, upper surface glabrescent, the conspicuous, filiform lateral nerves raised in a groove, secondary nerves obscure; on the lower surface the midrib and the 7—11 pairs of ascendant lateral nerves strongly prominent, slender; secondary nerves prominent, parallel; tertiary nerves conspicuous! areolate. Petiole up to 2 cm long (in young specimens up to 7.5 cm long), 0.2 cm diam., enlarged towards the apex, stellate puberulent.

Flowers unknown. Infructescences axillary and terminal, paniculate, stellate puberulent, main axis up to 14.0 cm long, lower branches up to 4.7 cm long, pedicel c. 1 cm long, articulate. Capsule obovoid, up to 2.5 cm long, 2.0 cm diam., 3—5-winged, base cuneate, apex emarginate, wings chartaceous. Seed-part subglobose, c. 1 cm diam.; coccus 0—4 seeded—seeds ascendant, obconical, c. 4 mm long and 2 mm diam., albuminous; albumen mealy, almost entirely covering the flat, obovoid or oblong cotyledons—radicle c. 1 mm long, testa coriaceous.

TYPUS: *Kuswata 231* (BO).

DISTRIBUTION: Islands of Sumbawa and Rintja (near Komodo Isl.)

*) A revision of *Colona* has been almost completed.
**) Assistant Botanist, Herbarium Bogoriense.