

FAUNA BURUANA.

LEPIDOPTERA RHOPALOCERA.

By

R. VAN EECKE

(Leyden Museum).

(with one coloured plate and ten textfigures).

Fam. PAPILIONIDAE.

1. *Papilio helena bouruensis* WALL. — 22 ♂♂ and 33 ♀♀, Leksula, 2, 3, 5, 6, 7, 8, 9/1921; 1, 2/1922. Fakal, 8, 9/1921. Wa' Tawa 18/9, 1921. 8 ♀♀ Belong to the form *argidia* JORD. and the rest is varying from the striped form to the totally black-brown one. One dwarf ♀ with a wingexpansion of 13 c.M.
2. *Papilio polydorus kajelanus* FRUHST. — 28 ♂♂ and 18 ♀♀, Lake Rana, 2, 3, 5, 6, 7/1921; 1/1922. Leksula, 2, 6/1921. Nal Besi, 4/1921. Wa' Tina, 1/1922. Wa' Fehat, 2/1922. Wa' Katin 4/1921. Mnges' Wain, 3, 4/1921. Wa' Tawa, 9/1921. En' biloro, 4/1921. One dwarf ♂ with a wingexpansion of 75 m.M.
3. *Papilio fuscus fuscus* GOEZE. — 60 ♂♂ and 30 ♀♀, Wa' Katin, 3, 4, 6, 7/1921. Fakal, 8, 9, 10, 11/1921. Leksula, 3, 5, 8, 9, 10, 11/1921. Mnges' Wain, 3, 4, 9/1921. Wa' Msisi, 9, 10/1921. Wai Eno, 4/1921. Wa' Tawa, 9/1921. Tifu, 3/1921. Air berboengi, 3/1922. Lake Rana, 7/1921. Nal' besi, 6, 7/1921. This species varies very much; all the forms are represented: *cinereomaculatus* GOEZE, *fuscus* GOEZE, *castaneus* GOEZE till a form resembling *ombiranus* ROTHSCH. from the Obi Isl. Three specimens have yellow-brown spots on the hind wings by discoloration; some specimens very small and with whitish trans-cellular spots under the costa.
4. *Papilio gambrisius buruanus* ROTHSCH. — 53 ♂♂ and 24 ♀♀, Leksula, 2, 3, 5, 6, 7, 8, 10/1921. Mnges' Wain, 3, 4/1921. Nal' Besi, 6/1921. Air berboenji, 9, 10/1921; 1/1922. Ehu, 9/1921. Wa' Msisi, 9/1921. Wa' Katin, 2/1922. One dwarf ♀ with a wingexpansion of

- 95 m.M. One ♂ with the yellowish white spots brownish yellow by discoloration. Little variation; only the yellowish white band on the hind wings of the ♂ varies in extensiveness.
5. *Papilio polytes alphenor* CRAM. — 15 ♂♂ and 9 ♀♀, Leksula, 3, 4, 6, 7, 8, 9, 10/1921. Ehu, 6, 9/1921. Wa' Ha, 12/1921. Wa' Tawa, 9/1921. Wa' Msisi, 10/1921.
 6. *Papilio deiphobus deiphobus* L. — 15 ♂♂ and 7 ♀♀, Leksula, 2, 4, 8/1921. Wa' Msisi, 10/1921. Wa' Katin, 3, 4/1921. Fakal, 8/1921. Wa'Temun, 2/1922.
 7. *Papilio ulysses ulysses* L. — 13 ♂♂ and 8 ♀♀, Wa'Temun, 2/1921, Leksula, 2, 6, 7, 8, 9/1921; 1/1922. Lake Rana, 7/1921. Nal'Besi, 6/1921.
 8. *Papilio codrus codrus* CRAM. — 6 ♂♂ and 4 ♀♀, Leksula, 5, 8/1921; 1/1922. Wa'Temun, 2/1922. Tandjong Liboli, 9/1921. Air berboenji, 3/1922. Msuma Lawan, 11/1921.
 9. *Papilio sarpedon halesus* FRUHST. — 13 ♂♂ and 4 ♀♀, Leksula, 6, 8, 10/1921; Rana, 5, 6, 7, 8/1921. Wa' Kasi, 12/1921. Nal'Besi, 4, 6, 7/1921. Wa'Ha, 12/1921.
 10. *Papilio eurypylus eurypylus* L. — 13 ♂♂ and 1 ♀, En'biloro, 4/1921; 2/1922. Nal'Besi, 5, 6/1921. Air berboenji, 9/1921. Leksula, 3, 10/1921. Wa'Katin, 3/1921. Wa'Temun, 2/1922.
 11. *Papilio macfarlanei cestus* FRUHST. — 2 ♂♂ and 4 ♀♀, Wa' Msisi, 10/1921. Wai Eno, 4/1921. Mefa, 11/1921. Nal'Besi, 1/1922. Tifu, 3/1921. One small specimen with a wingexpansion of 65 m.M.
 12. *Papilio agamemnon plisthenes* FELD. — 8 ♂♂ and 6 ♀♀, Ehu, 9/1921. Leksula, 6, 8/1921. Air berboenji, 9/1921. Fakal, 2/1922. Wa' Msisi, 10/1921. Mnges' Waen, 1/1922.

Species already known from Buru but not collected by Mr. L. J. TOXOPEUS:

1. *Papilio prattorum* J. & T. with a form *mixtum* J. & T. partaking the character of both *prattorum* and *P. helena bouruensis* WALL. (Bull. Hill Mus. I, p. 360 and 508).
2. *P. aristeus timocrates* FELD. (SEITZ, Grossschm. d. Erde IX, p. 88).
3. *Papilio hypolitus* CRAM. (HOLL., Nov. Zool. VII, p. 82, 1900).¹⁾

¹⁾ On ♂ seen at the most eastern point of the island, where DOHERTY caught the specimens mentioned by HOLLAND. L. T.

4. *Leptocircus meges ennius* FELD. — 1 ♂ in the collection of the Leyden Museum ex collection P. J. VAN DEN BERGH (Velp), who received a large number of Buruan Lepidoptera. Never captured so eastly.

Fam. PIERIDAE.

1. *Elodina egnatia bouruensis* WALL. — 2 ♂♂, Fakal, 9/1921. Wai Gaté, 1/1922.
2. *Delias dorimene rothschildi* HOLL. — 6 ♂♂ and 3 ♀♀, Wai Eno, 4/1921. Ehu, 9/1921. Fakal, 8/1921. Wa'Temun, 2/1921. Wa'Katin, 4/1921. It is possible, that we have to do here with *D. apatela* J. & T. (Bull. Hill Mus. I, p. 510; pl. 6, ff. 7, 8, 1924), but the specimens do not possess a narrow white line inside the black submarginal line on the underside of the hind wing, only some traces in a couple of specimens, and the ♀♀ without the two white subapical spots on the upperside of the fore wings. Yet very much resembling the figures, cited above.
3. *Delias caeneus philotis* WALL. — 13 ♂♂ and 6 ♀♀, Leksula, 3, 7/1921. Wai Eno, 4/1921. Lake Rana, 5/1921. Tifu, 3/1921. Mnges' Wain, 4/1921. Wa'Katin, 3, 4/1921.
4. *Delias isse echo* WALL. — 7 ♂♂ and 8 ♀♀, Ehu, 9/1921. Nal'Besi, 5, 6/1921. Wai Eno, 4/1921. Wa'Katin, 4/1921.
5. *Delias persephone serrata* nov. subspec. (Pl. VIII, Fig. 1-2) — 4 ♂♂ and 3 ♀♀, Lake Rana, 5/1921. Nal'Besi, 5, 6/1921. Fakal, 10/1921. Wa'Temun, 2/1922. FRUHSTORFER has placed *Delias persephone* STGR. (Iris VII, p. 355) in the genus *Huphina* MOORE (SEITZ, Grossschm. d. Erde IX, p. 147) in the vicinity of *Huphina abnormis* WALL. That is a mistake, so far as I can see. The nervature of 3 specimens of *Huphina abnormis* WALL. in the collection in Leiden is different from that of 1 specimen of *Delias persephone* STGR. from Salawatti. *Persephone* STGR. must be placed in the genus *Delias* HÜBN. just as *knowlei* J. & N. (Trans. Ent. Soc. Lond. II, 1915, p. 182), *dohertyi* OBERTH. (Etud. d'Ent. 1894, 61), *ornythion* GR.-SM. (Proc. Zool. Soc. Lond. 1880, p. 613) and perhaps also *ladas* GR.-SM. (Nov. Zool. I, p. 585), which must be very much related forms.

♂ Upperside of fore wings pure white with narrow black costal margin to apex, black apex and outer margin ending at vein 2. Underside white with some yellow on the base of costa; costa black; reddish yellow-brown apical area with four orange subapical spots and reddish yellow-brown outer margin to vein 1. Upperside hind wing nearly white, but the dark

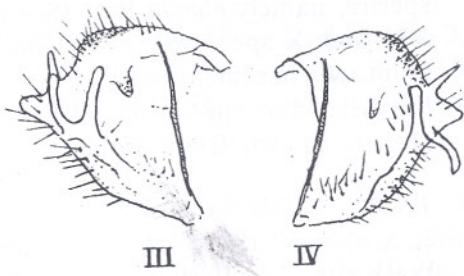
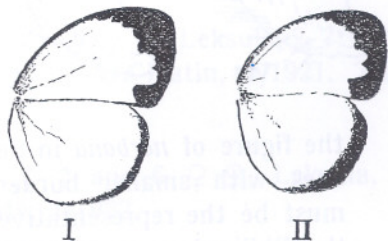
underside a little visible, with a very narrow blackish outer margin. Underside dark reddish yellow-brown with some yellow scales near the base; a red costal streak; a red submarginal ziczac line from nearly the end of the costal streak to tornus, very narrow on vein 5 and larger at the tornus; some grayish scales along the outer margin. Palpi, pectus and underside of thorax yellowish, abdomen white, grayish to the base; thorax gray with some yellow on the prothorax; legs whitish with black.

♀ Upperside of fore wing white with grayish brown costa and large apical area, where three or four very small whitish subapical spots are visible or traces of such spots, and narrow grayish brown outer margin to near vein 1. Hind wing grayish brown, especially the apical and subapical area and outer margin; whitish to the base and anal area. Underside just as in the male. Exp. alar.: 65 m.M.

6. *Huphina aspasia jael* WALL. — 21 ♂♂ and 1 ♀, Leksula, 2, 7, 8, 10/1921; 1/1922. Wa'Ha, 12/1921. Fakal, 10/1921; 2/1922. Mnges' Wain, 4/1921. Air berboenji, 3/1921. Wa'Gaté, 12/1921. Lake Rana, 7/1921. Tifu, 12/1921. Ehu, 9, 11/1921. Wa'Tawa, 9/1921.
7. *Huphina perimale moluccensis* subsp. nov. — 4 ♂♂ and 2 ♀♀, Leksula, 2, 8/1921. Tifu, 3/1921. Wa'Tawa, 9/1921. There are also some specimens from Ceram, Tidore and Manavolko in the collection of the Leyden Museum, not differing from those from Buru. Much resembling *bolana* FRUHST. from the Key Islands with distinct subapical spots and the females browner.
8. *Appias ada leucosticta* BUTL. — 10 ♂♂ and 6 ♀♀, Air berboenji, 1/1922. Leksula, 10, 12/1921; 1/1922. Wa'Tawa, 9/1921. Wai Eno, 4/1921. Makatita, 9/1921. Wa'Msisi, 10/1921.
9. *Appias nero bouruensis* WALL. — 14 ♂♂, Air berboenji, 1, 3/1921. Leksula, 9/1921. Wa'Ha, 9, 12/1921. Lumara, 9/1921.
10. *Appias albina albina* BSD. — 13 ♂♂ and 3 ♀♀, Air berboenji, 10/1921; 3/1922. Leksula, 7, 8, 10, 11/1921. Wa'Tawa, 9/1921. Wa'Ha, 12/1921. Station 20, 8/1921. One male with rounded apices of the fore wings. One female with the pattern of *agatha* STGR. ♀.
11. *Appias melania cynisca* WALL. — 1 ♂, Leksula, 3/1921. A rare species in Buru.
12. *Saletara liberia chrysoberylla* FRUHST. — 1 ♂, Lumara, 9/1921.

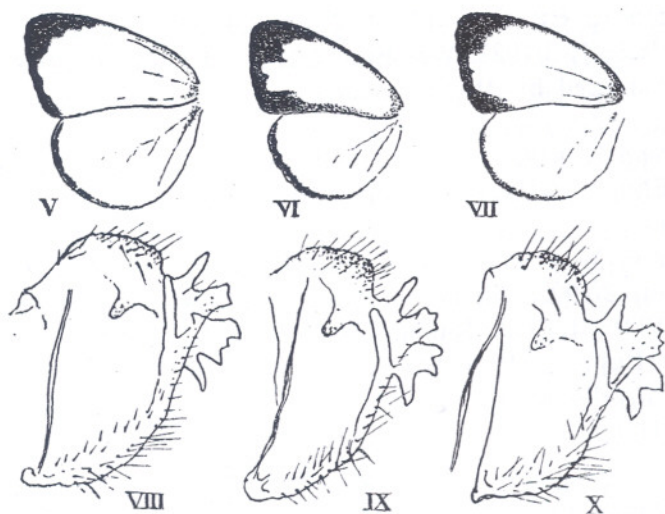
13. *Catopsilia crocale flava* BUTL. — 47 ♂♂ and 68 ♀♀, Leksula, 3, 4, 5, 6, 7, 8, 10/1921; 1, 3/1922. Wai Eno, 4/1921. Wa'Katin, 12/1921. Several specimens reared by Mr. TOXOPEUS.
14. *Terias libythea drona* HORSF. — 4 ♂♂ and a very small ♀, Leksula, 4/1921; 1/1922. Ehu, 9/1921. Wa'Katin, 3/1921; 2/1922.
15. *Terias hecabe diversa* WALL. — 6 ♂♂ and 20 ♀♀, Fakal, 4/1921; 2/1922. Wa'Temun, 2/1922. Air berboenji, 1/1922. Leksula, 4, 12/1921. Mnges' Wain, 9/1921; 1/1922. Rana, 5/1921. Wai Eno, 4/1921. Wa' Msisi, 5/1921. Nal' Besi, 4, 6/1921. Wa'Tawa, 3/1921. Wa'Katin, 3/1921. The females white or yellowish white. (Text-fig. I and III).

16. *Terias* spec. — 3 ♂♂ and 2 ♀♀, Leksula, 4, 9/1921; 3/1922. Tifu, 3, 12/1921. I have tried to distinguish all the forms of *hecabe* and *blanda* by studying the genital armature of the males, but this is taking up so much time that I must put it on the shelf now. However I am sure that there are more different species than named by FRUHSTORFER in SEITZ. There are two groups of species: a *hecabe*-group and a *blanda*-group. The *hecabe*-group has a male genital armature as figured in the textfigures VIII and IV, with finger-shaped processi on the valva, which has a simple projecting point.



This species(?) from Buru (text-fig. II) belongs to the *hecabe*-group. The colour of the male is darker than in *hecabe diversa*; the outer margins broader black-brown, not black as in *hecabe*. Last not least the female is not white as in *hecabe diversa* WALL., but yellow with broad brown outermargins. The valvae of the males shaped like figured in IV (one of the finger-shaped processi has been broken down). A name may only be given to this species(?) after a careful revision of all the known forms of *hecabe*.

17. *Terias blanda cingata* FRUHST. — 20 ♂♂, Leksula, 4, 5, 6, 7/1921. Tifu, 3/1921. Wai Eno, 4/1921.
18. *Terias* spec. — 5 ♂♂ and 1 ♀, Leksula, 2, 4/1921. Rana, 4/1921. Belongs to the *blanda*-group with a valva, figured in X and the pattern



figured in VII. The female resembles the male with a broader marginal band on the hind wing and more brown dust to the bases of the wings.

19. *Terias norbana depicta* FRUHST? —

3 ♂♂ and 5 ♀♀, Leksula, 2, 5, 6, 8, 9, 10, 12/1921. Wa'-Katin, 6/1921. Wa'-Msi, 10/1921. One

female precisely as

the figure of *norbana* in SEITZ, Grossschm. Bd. IX, pl. 73 h; the other ones with smaller borders to the outer margins. These specimens must be the representatives of *T. latimargo* HOPFF. from Celebes and the Philippines on the island Buru and forms of the *blanda*-group. It is also possible that we have to do here only with varieties of one species, namely *blanda* BSD. (See textfigures V—X; V and VIII *blanda*; VII and X spec. no. 18; VI and IX *depicta* FRUHST.).

HOLLAND has mentioned also *T. tilaha* HORSF., but I think that he has seen the specimens with broad margins of *norbana* FRUHST., already known from Amboina.

20. *Terias candida exalbescens* JURR. — 11 ♂♂ and 16 ♀♀, Leksula, 2, 3, 6, 7, 12/1921; 1/1922. Air berboenji, 5/1921. Wa'Temun, 2/1922. Wa'Katin, 4, 6/1921. Wai Eno, 4/1921. Wa' Ha, 12/1921. Tifu, 3/1921. Na' Besi, 4/1921. Fakal, 2/1922. Mnges' Wain 1/1922.
21. *Gandaca harina aiguina* FRUHST. — 3 ♂♂ and 1 ♀, Air berboenji, 3/1922.
22. *Hebomoia leucippe leucogynia* WALL. — 7 ♂♂ and 2 ♀♀, Air berboenji, 7, 10/1921. Wai Gaté, 1/1922. Ehu, 9/1921. Tifu, 1/1922. Leksula, 8, 12/1921. Wa' Ha, 12/1921.
23. *Pareronia jobaea aeboja* FRUHST. — 10 ♂♂, Leksula, 2, 6, 8/1921. Wa'Gaté, 12/1921; 1/1922. Wa'Tina, 1/1922. En'Boti, 1/1922. Air berboenji, 11/1921.

Pieridae not collected by Mr. TOXOPEUS: 1. *Delias prouti* J. & T.; 2. *Delias schmassmanni* J. & T.; 3. *Delias apatela* J. & T.; 4. *Delias eschatia*

- J. & T.; 5. *Delias vidua* J. & T. (Bull. Hill Mus. I, pp. 508—511, 1924).
6. *Catopsilia pomona catilla* CRAM. *Appias jacquinoti* LUC. of HOLLAND must be *App. melania cynisca* WALL.; *Appias eliada* HEW. = *Saletara liberia chrysoberylla* FRUHST.

Fam. **DANAIDAE.**

1. *Danais archippus* F. — 2 ♂♂ and 6 ♀♀, Leksula, 11, 12/1921; 1/1922.
2. *Danais chrysippus petilia* STOLL. — 1 ♂ and 6 ♀♀, Leksula, 11, 12/1922; 1/1922.
3. *Danais philene philene* CRAM. — 14 ♂♂ and 7 ♀♀, Leksula, 2, 7/1921; 1/1922. Wai Eno, 4/1921. Fakal, 10/1921. Wa'Katin, 3/1921. Tifu, 3/1921.
4. *Danais ismare felicia* FRUHST. — 12 ♂♂ and 6 ♀♀, Leksula, 2, 3, 5, 6, 10, 12/1921; 1/1922. Wai Gaté, 1/1922.
5. *Danais melissa nigra* MACL. — ♂ and ♀, Leksula, 1/1922. Tifu, 3/1921.
6. *Danais cleona lutescens* BUTL. — 18 ♂♂ and 22 ♀♀, Leksula, 2, 3, 8, 10, 12/1921; 1/1922. Wa'Katin, 3/1921. Mnges'Wain, 3, 4/1921. Tifu, 3/1921. Nal' Besi, 5/1921. Fakal, 3/1922. Rana, 4/1921. Wai Eno, 4/1921.
7. *Danais juventa buruensis* HOLL. — 20 ♂♂ and 11 ♀♀, Tifu, 3/1921. Mefa, 3/1921. Wa'Msisi, 10/1921. Wa'Temun, 2/1922. Nal' Besi, 5/1921; 3/1922. Wai Eno 4/1921. Leksula, 2, 3, 4, 6, 12/1921. Wa'Katin, 3, 12/1921. Wai Gaté, 1/1922. Wa'Tawa, 9/1921.
8. *Hestia aza* BSD. — 16 ♂♂ and 12 ♀♀, Leksula, 2, 8, 9, 12/1921. Ehu, 9/1921. Mnges'Wain, 3/1921. Rana, 5, 7/1921. Wa'Kasi, 12/1921. Tifu, 3, 12/1921. Wa'Tawa, 10/1921.
9. *Euploea climena dohertyi* HOLL. — 9 ♂♂ and 8 ♀♀, Leksula, 2, 7/1921; 1/1922. Tifu, 3/1921. Wa'Ha, 12/1921. Wa'Katin, 4/1921. Wai Eno, 4/1921.
10. *Euploea spiculifera* MOORE. — 27 ♂♂ and 5 ♀♀, Wa'Ha, 12/1921. Wa'Gaté, 12/1921; 1/1922. Leksula, 2, 4, 6, 11/1921. Wai Eno, 4/1921. Tifu, 12/1921. Fakal, 9/1921; 3/1922. Wa'Temun, 2/1922. Air berboenji, 1, 3/1922. Nal' Besi, 6/1921. Rana, 5/1921.

11. *Euploea alecto* BUTL. — 1 ♂, Wa'Msisi, 10/1921.
12. *Euploea duponcheli* BSD. — 8 ♂♂, Leksula, 2, 6, 10/1921, 1/1922. Wa'Katin, 4/1921. Wai Eno, 4/1921. Tifu, 12/1921. Wa'Temun, 2/1922. Nal'Besi, 5/1921.
13. *Euploea watsoni* MOORE. — 6 ♂♂ and 4 ♀♀, Leksula, 2, 7/1921; 1/1922. Air berboenji, 5/1921. Wa'Gaté, 12/1921. Wa'Ha, 12/1921. *Watsoni* MOORE must be a race of *picina* BUTL.
14. *Euploea salabanda cledonia* FRUHST. — 4 ♂♂ and 6 ♀♀, Leksula, 2, 10/1921. Tifu, 3/1921. Probably the same species as *Calliploea infantilis* BUTL. of HOLLAND. Blueish in some lights.
15. *Euploea phaenarete hollandi* FRUHST. — 14 ♂♂ and 30 ♀♀, Leksula, 3, 5, 6, 7, 8, 9, 10, 11/1921. Tifu, 3/1921. Ehu, 9/1921. Wa'Kasi, 12/1921. Mnges'Wain, 3/1921; 1/1921. Wa'Msisi, 10/1921. Wa'Katin, 3, 4/1921. HOLLAND has given the name *semicirculus* BUTL. to this species.
16. *Euploea nemertes hisme* BSD. — 28 ♂♂ and 31 ♀♀, Ehu, 9/1921. Wa'Katin, 3, 4/1921. Nal'Besi, 4, 5, 5, 6/1921. Mnges'Wain, 3, 4/1921; 1/1922. Wai Eno, 4/1921. Leksula, 2, 7, 10, 11, 12/1921. Tifu, 3, 11/1921. Air berboenji, 5/1921. Rana, 5, 7/1921.

PALAEOTROPINAE.

1. *Tellervo zoilus assarica* CRAM. — 6 ♂♂ and 11 ♀♀, Air berboenji, 4/1921. Nal'Besi, 3/1921. Wa'Tina, 1/1922. Tifu, 11/1921. Wai Eno, 4/1921. Wa'Katin, 3/1921.

Fam. SATYRIDAE.

1. *Ypthima pusilla* FRUHST. — 7 ♂♂ and 1 ♀, Wai Eno, 4/1921. Mnges'Wain, 3/1921. Wa'Katin, 3, 4/1921. En' Biloru, 2/1922. Tifu, 1/1922. Wai Eken, 9/1921.
2. *Lethe europa arete* CRAM. — 3 ♂♂ and 6 ♀♀, Wa'Katin, 3, 4, 6/1921. Wa'Tawa, 9/1921. Leksula. Bah'lalé, 1/1922. Wai Gaté, 12/1921; 1/1922.
3. *Mycalesis sirius canicula* FRUHST. — 4 ♂♂ and 5 ♀♀, Mnges'Wain, 9/1921. Wai Eno, 4/1921. Wa'Tina, 1/1922. Wai Eken, 3/1921. Leksula 3/1921.
4. *Mycalesis terminus wakolo* FRUHST. — 19 ♂♂ and 7 ♀♀, Tifu,

- 3, 11/1921. Wa'Tawa, 9/1921. Leksula, 2, 6, 8, 12/1921. Fakal, 8, 9/1921. Wa'Msisi, 10/1921. Nal'Besi, 3, 6/1921. Wai Eno, 4/1921. Wai Eken, 3/1921. Rana, 7/1921.
5. *Mycalesis perseus lalassis* HEW. — ♂ and ♀, Wai Eken, 3/1921.
6. *Orsotriaena medus licium* FRUHST. — 3 ♂ ♂, Tifu, 3/1921. Wai Eken, 9/1921.
7. *Melanitis leda bouruana* HOLL. — 26 ♂ ♂ and 19 ♀ ♀, Fakal, 8, 9/1921. Wai Eno, 4/1921. Rana, 5, 7, 8/1921. Leksula, 2, 5, 7/1921; 3/1922. En'Biloro, 2/1922. Nal'Besi, 5, 6, 7, 8/1921. Mnges'Wain, 1/1922. Wa'Katin, 3, 4/1921. Air berboenji, 5/1921.
8. *Melanitis constantia dictatrix* FRUHST. — 12 ♂ ♂ and 5 ♀ ♀, Fakal, 10/1921. Wai Eno, 4, 5/1921. Wa'Katin, 12/1921. Leksula, 2, 7/1921; 1/1922. Nal'Besi, 5/1921. Rana, 5/1921. Wa'Katin, 3/1921. Wa'Tawa, 9/1921. Air berboenji, 5/1921.
9. *Melanitis amabilis kajelana* FRUHST. — 18 ♂ ♂ and 15 ♀ ♀, Ehu, 9/1921. Wa'Temun, 2/1922. Wa'Katin, 4/1921. Fakal, 9, 10/1921, 2/1922. Mnges'Waen, 1/1922. Nal'Besi, 5, 6, 7/1921. Leksula, 2, 3/1921. Rana, 5, 6, 7/1921. Mefa, 11/1921.

HOLLAND has also obtained from Buru *M. ribbei* RÖB. (Iris I, p. 192; pl. IX, f. 1, 2), a race of *M. velutina* FELD.

ELYMNIINAE.

1. *E. vitellia viminalis* WALL. — 2 ♂ ♂, Wa'Bohi, 3/1922. A rare species. These 2 specimens with 2 circumcellular blueish small spots.

Fam. AMATHUSIIDAE.

1. *Taenaris urania hollandi* FRUHST.¹⁾ — 21 ♂ ♂ and 11 ♀ ♀, Ehu, 6, 9/1921. Fakal, 9, 10/1921. Leksula, 4, 9/12/1921; 1/1922. Nal'Besi, 6, 7/1921. Wai' Eno, 4/1921. Wa'Tawa, 9/1921. The figure of *hollandi* in SEITZ seems to be not that of the common form in Buru; the general colour must be darker with some transcellular white in the fore wings.
2. *Taenaris selene* WESTW. (= *buruensis* FORBES) — 20 ♂ ♂ and 22 ♀ ♀, Wa'Katin, 3, 4/1921. Mnges'Wain, 3, 11/1921. Ehu, 9/1921. Nal'Besi,

¹⁾ Some 20 specimens were reared from pupae, which were found on the underside of one big banana leaf at the mountain village of Fakal. The pupae were partly black, partly green. L. T.

5, 7/1921. Wai Eno, 4/1921. Mefa, 11/1921. Rana, 5/1921. Wai Eken, 3/1921. Leksula, 4, 6, 7, 8, 10/1921. Wa'Tawa, 9, 10/1921. Wa'Msisi 10/1921. En'Biloro, 2/1922.

Fam. NYMPHALIDAE.

1. *Cupha crameri* FELD. — 2 ♂♂, Mefa, 9/1921.
2. *Cupha lampetia mirona* FRUHST. — 2 ♂♂ and 4 ♀♀, Ehu, 9/1921. Mefa, 9/1921. Wai Eken, 1/1922. Wai Eno, 4/1921.
3. *Issoria sinha buruana* FRUHST. — 8 ♂♂ and 3 ♀♀, Ehu, 9/1921. Wai Eken, 3, 9/1921. Wai Eno, 4/1921. Leksula, 8, 10/1921. En'Biloro, 4/1921. Wa'Katin, 3/1921.
4. *Cynthia arsinoe buruana* FRUHST. — 48 ♂♂ and 5 ♀♀, Ehu, 9/1921. Leksula, 2, 3, 7, 9/1921. Rana, 5, 7/1921. Nal'Besi, 4, 5, 6, 7/1921; 3/1922. Wai Eno, 4/1921. Wa'Katin, 4/1921. Wa'Gaté, 1/1922. Mnges'Wain, 3, 4/1921; 1/1922. Wa'Tawa, 9/1921.
5. *Cethosia biblis buruana* HOLL. — 12 ♂♂ and 6 ♀♀, Leksula, 2, 3, 8, 11, 12/1921; 1/1922. Tifu, 12/1921. Wai Gaté, 1/1922. Bah'Lalé, 1/1922. Air berboenji, 5/1921.
6. *Cethosia chrysippe iphigenia* FRUHST. (Pl. VIII, Fig. 3, ♀). — 6 ♂♂ and 4 ♀♀, Ehu, 9/1921. Wai Eno, 4/1921. Rana, 5/1921. Nal'Besi, 5/1921. En'Biloro, 4/1921. Tifu, 11/1921. The females more uniform reddish brown, wanting the blueish black colour of the males.
7. *Precis hedonia hedonia* L. — 12 ♂♂ and 1 ♀, Wai Eno, 4/1921. Leksula, 2, 4, 5, 8/1921. Wa'Katin, 3/1921. Nal'Besi, 4, 5/1921. Mnges'Wain, 3/1921. Rana, 5/1921. Bah'Lalé, 1/1922.
8. *Precis atlites atlites* L. — 4 ♂♂, Rana, 6/1921. En'Biloro, 2/1922. Leksula, 10/1921.
9. *Precis erigone antigone* FELD. — 5 ♂♂ and 4 ♀♀, Wa'Katin, 3, 4, 6/1921. Mnges'Wain, 1/1922. Leksula, 2, 8/1921; 1/1922.
10. *Precis villida villida* F. — 3 ♂♂ and 1 ♀, Leksula, 10/1921.
11. *Precis orithya orthosia* GODT. — 7 ♂♂ and 6 ♀♀, Wai Eken, 3/1921. Wa'Katin, 3, 4/1921. Wai Eno, 4/1921. Leksula, 1/1922. One ♀ aberration with large joined ocelli on the hind wings.

12. *Symbrenthia hippoclus buruanus* FRUHST. — 26 ♂♂ and 9 ♀♀, Rana, 5/1921. Tifu, 12/1921. Nal'Besi, 5, 7, 8/1921. Wa'Temun, 2/1922. Wai Eken, 1/1922. Wa'Katin, 10/1921. Mnges'Wain, 1/1922.
13. *Mynes geoffroyi dohertyi* HOLL. (Pl. VIII, Fig. 6, ♀). — 16 ♂♂ and 11 ♀♀, Fakal, 2/1922. Rana, 7/1921. Nal'Besi, 4/1921. Wa'Temun, 2/1922. Mr. JURRIAANSE has redescribed this form under the name *talboti* (Zool. Meded. Mus. Leiden VII, p. 127, 1923). FRUHSTORFER has placed the same form in the genus *Prothoë* (SEITZ IX, p. 715) as a race of *P. australis* GUÉR. The name of HOLLAND (Ent. News IV, p. 337; t. 15, f. 2, 3, 1894) must be maintained for the Buruan race of *M. geoffroyi* GUÉR., resembling very much *M. geoffroyi doryca* BUTL. from Nw. Guinea.
14. *Yoma sabina sabina* CRAM. — 5 ♂♂ and 6 ♀♀, Leksula, 2, 6, 7, 10/1921. Air berboenji, 3, 5/1921. Wa'Msisi, 10/1921. Wa'Gaté, 1/1922.
15. *Hypolimnas antilope maglovius* FRUHST. — 17 ♂♂ and 9 ♀♀, Nal'Besi, 5, 6/1921. Rana, 5, 7/1921. Fakal, 10/1921. En'Biloro, 4/1921. Wa'Katin, 4/1921.
16. *Hypolimnas alimena senia* FRUHST. — 9 ♂♂ and 14 ♀♀, Rana, 5, 7/1921. Wa'Katin, 3, 4, 9/1921. Wa'Msisi, 10/1921. Leksula, 9, 10/1921; 1/1922. Wa'Temun, 2/1922. Wa'Gaté, 1/1922. Wa'Tawa, 9/1921. Nal'Besi, 5, 6/1921. Wai Eno, 4/1921. Tifu, 3/1921.
17. *Hypolimnas misippus* L. — 1 ♀, Wa'Temun, 2/1922.
18. *Hypolimnas bolina lisianassa* CRAM. — 46 ♂♂ and 34 ♀♀, Leksula, 2, 3, 4, 5, 6, 7, 8, 9, 10/1921. Wa'Katin, 3, 4, 6/1921. Mnges'Waen, 3, 4, 5/1921; 2/1922. Nal'Besi, 4, 5, 7/1921. Wa'Mala, 2/1922. Wai Eno, 4, 6/1921. Fakal, 2/1922. Tifu, 3/1921. Rana, 6/1921. Wa'Temun, 2/1922. The wet season ♀ form is represented by a *proserpina* CRAM. and a *iphigenia* CRAM. form; not by a single *eriphile* CRAM. form. The *euryanthe* FRUHST. form and the *perimele* CRAM. form seem to be common in the dry season. ¹⁾ The males with blueish spots for the greater part; some with whitish spots.

¹⁾ For weather conditions in Buru, see Bull. 80 (2nd Bull. Buru Exp.), Maatsch. Nat. Ond. Ned. Kol. I am not convinced that the so-called seasonal forms of Buru are due to the climate. It struck me when collecting, that there could be distinguished two forms of ♂♂ in this species. The larvae of the smaller one feed gregariously, that of the other one were seldom reared, but if a single pupa was found, it always yielded the big form. L. T.

19. *Hypolimnas pandarus pandora* WALL. — 37 ♂♂ and 15 ♀♀, Nal' Besi, 4, 5, 6, 7/1921. Wa'Katin, 3, 4, 5, 6/1921. Wai Eno, 4/1921. Mnges'Wain, 3, 4/1921. En'Biloro, 4/1921. Rana, 5, 7/1921. Leksula, 2, 9/1921. Ehu, 6, 9/1921. Tg. Saroma, 9/1921. Goh'Reman, 4/1921.
20. *Doleschallia bisaltide polibete* CRAM. — 11 ♂♂ and 1 ♀, Nal' Besi, 4/1921. Leksula, 8/1921. Wa'Msisi, 10/1921. Mnges'Wain, 3/1921. Msuma Lawan, 11/1921.
21. *Doleschallia melana melana* STGR. — 2 ♂♂ and 3 ♀♀, Leksula, 12/1921. Wa'Kasi, 12/1921. Wa'Katin, 3/1921. Tifu, 11/1921.
22. *Cyrestis paulinus paulinus* FELD. — 5 ♂♂ and 5 ♀♀, Leksula, 9/1921. Air berboenji, 9/1921; 1/1922. Wa'Ha, 12/1921.
23. *Cyrestis telamon buruensis* MARTIN. — 9 ♂♂, Wa'Liku, 9/1921. Leksula, 9, 12/1921. Air berboenji, 9, 10/1921. Kawiri, 3/1921. Tifu, 3/1921.
24. *Cyrestis thyonneus buruanus* MARTIN. — 4 ♂♂ and 4 ♀♀, Leksula, 8, 12/1921. Wa'Ha, 12/1921. Air berboenji, 3/1922. Tifu, 3/1921.
25. *Rahinda mysia neriphoides* HOLL. — 8 ♂♂ and 3 ♀♀, Leksula, 2, 6, 8/1921. Wa'Tawa, 9/1921. Wa'Msisi, 10/1921. Wa'Ha, 5/1921. Tifu, 3/1921. One colour-aberration; without yellow, but light yellowish buff instead.
26. *Rahinda venilia godelewa* FRUHST. — 12 ♂♂ and 16 ♀♀, Leksula, 2, 6, 7, 8/1921. Tifu, 3/1921. Ehu, 9/1921. Kawiri, 3/1921. Air berboenji, 5/1921. Air berboenji, 5/1921. Wa'Katin, 6/1921; 2/1922. Nal' Besi, 4/1921. Fakal, 4/1921. Rana, 5/1921.
27. *Neptis amphion nerio* DE NICÉV. — 2 ♂♂ and 2 ♀♀, Mnges'Wain, 2/1922. Wa'Temun, 2/1922. Tifu, 3/1921. Wa'Kasi, 12/1921. Named *N. heliodora* Cram. by HOLLAND.
28. *Pantoporia eulimene eulimene* GODT. — 1 ♂ and 6 ♀♀, Wa'Ha, 12/1921. Leksula, 2/1921; 1/1922. Nal' Besi, 3/1922. Wa'Gaté, 12/1921.
29. *Parthenos sylvia nodrica* BSD. — 2 ♂♂ and 1 ♀, Tandjong Li'boli, 9/1921. This species seems to be very localised in Buru.
30. *Euthalia aeropus helvidius* FRUHST. (Pl. VIII, Fig. 4, ♀) — 11 ♂♂ and 1 ♀, Leksula, 2, 3/1921, Wa'Katin, 4/1921. Nal' Besi, 5, 7/1921.

Wa'Tawa, 1/1922. Wa'Bohi, 1/1922. Wa'Mala, 2/1922. ♀ With whitish-yellow transversal band, not orange-red as mentioned by FRUHSTORFER.

31. *Dichorragia ninus ninus* FELD. — 2 ♂♂, Wa'Temun, 2/1922. Mefa, 11/1921.
32. *Apaturina erminea mirona* FRUHST. — 1 ♂, Wa'Gaté, 12/1921.
33. *Eriboea pyrrius buruanus* ROTHs. & JORD. — 8 ♂♂ and 3 ♀♀, Mnges'Wain, 4/1921. Leksula, 8/1921. NaI'Besi, 5, 6/1921; 3/1922. Fakal, 10/1921. Bah'Lalé, 1/1922.

The following *Nymphalidae* are known from Buru, but not collected by Mr. TOXOPEUS:

1. *Ergolis merionoides buruensis* FRUHST. (Berl. Ent. Zs. 44, p. 94, 1899).
2. *Mynes plateni* STAUD. (ex coll. v. D. BERGH) (Pl. VIII, Fig. 5).
3. *Cyrestis ceramensis sicca* FRUHST. (Entom. Meddel. 1904, p. 325.)
4. *Charaxes mars madensis* ROTHsCH. (Entomol. 32, p. 172, 1899).

Fam. ACRAEIDAE.

1. *Miyana moluccana buruensis* ROTHsCH. — 8 ♂♂ and 6 ♀♀, Wa'Temun, 2/1922. Fakal, 2/1922. Ehu, 9/1921. Wai Eno, 4/1921. Kunturun, 2/1922.

In the entomological portion of „Voyage de l'Astrolabe” Dr. BOISDUVAL records 23 species from Buru. Dr. A. R. WALLACE in his *Pieridae* of the Indian and Australian Regions gives 16 species, and in his Notes on Eastern Butterflies records one species of the *Elymniinae* and five of the *Nymphalinae* from Buru. (L. DE NICÉVILLE. On a small collection of Butterflies from Buru in the Moluccas — Journ. Asiatic Soc. Bengal LXVII, 1898). W. J. HOLLAND records in „The Lepidoptera of Buru”, Nov. Zool. VII, 1900, the following numbers of *Rhopalocera*: *Danaidae* 16; *Satyridae*: 9; *Elymniinae*: 1; *Morphidae*: 2; *Nymphalidae*: 29; *Pieridae*: 19; *Papilionidae*: 12. Here are not mentioned the *Erycinidae* and *Lycaenidae*, because Mr. L. J. TOXOPEUS will give a list of these families.

At last it will be useful to give a tabel of all the species recorded by BOISDUVAL, WALLACE, DE NICÉVILLE, HOLLAND, SEITZ a.o. and their synonymy.¹⁾

¹⁾ I have added some notes on the rarity and local occurrence of the species. R = rare, VR = very rare, NR = not rare, C = common, c = coast, m = mountains. L.T.

| | BOISDUVAL. | WALLACE. | DE NICÉVILLE | HOLLAND. | SEITZ. | a.o. |
|----------------------------|----------------------------|---|--|---|---|---------------------------------------|
| c. NR. | <i>Ornithoptera hellen</i> | <i>O. helena</i> , v. <i>bouruensis</i> | <i>Troides oblongomaculatus bouruensis</i> WALL. | <i>T. oblongomaculatus bouruensis</i> WALL. | <i>Papilio helena bouruensis</i> WALL. | |
| m. VR. | — | — | — | — | — | <i>Papilio pratorum</i> J. & T. |
| c. VR. | — | — | — | <i>T. hypolitus</i> CRAM. | — | |
| c. m. NR. | — | — | <i>P. polydorus</i> L. | <i>P. polydorus</i> L. | <i>P. polydorus kajelanus</i> FRUHST. | |
| Papilionidae. | C. | — | <i>P. fuscus</i> GOEZE. | <i>P. fuscus</i> GOEZE. | <i>P. fuscus fuscus</i> GOEZE. | |
| | C. | — | <i>P. gambrisius</i> CRAM. | <i>P. gambrisius buruanus</i> ROTH. | <i>P. gambrisius buruanus</i> ROTH. | |
| c. NR. | — | — | <i>P. polytes alphenor</i> CR. | — | <i>P. polytes alphenor</i> CR. | |
| c. NR., m. R. | — | — | <i>P. deiphobus</i> L. & <i>deiphontes</i> FELD. | <i>P. deiphobus</i> L. | <i>P. deiphobus deiphobus</i> L. | |
| c. NR., m. R. | — | — | — | <i>P. ulysses</i> L. | <i>P. ulysses ulysses</i> L. | |
| m. VR. | — | — | — | — | <i>P. aristeus timocrates</i> FELD | |
| c. R. | — | — | — | <i>P. codrus</i> CR. | <i>P. codrus codrus</i> CRAM. | |
| C. | <i>P. sarpedon</i> | — | <i>P. sarpedon anthedon</i> FELD | <i>P. sarpedon anthedon</i> FELD | <i>P. sarpedon halesus</i> FRUHST. | |
| Papilionidae. | NR. | — | <i>P. eurypylus</i> L. | <i>P. eurypylus</i> L. | <i>P. eurypylus eurypylus</i> L. | |
| | R. | — | — | <i>P. macjarlanei</i> BUTL. | <i>P. macjarlanei cestus</i> FRUHST. | |
| | NR. | — | <i>P. agamemnon plisthenes</i> FELD. | <i>P. agamemnon plisthenes</i> FELD. | <i>P. agamemnon plisthenes</i> FELD. | |
| ? (Doubtfully indigenous). | — | — | — | — | — | <i>Leptocircus meges ennius</i> FELD. |
| 16 | 2 | 2 | 9 | 12 | 13 | 2 |
| VR. | — | <i>Elodina bouruensis</i> | <i>Elodina bouruensis</i> WALL. | <i>Elodina bouruensis</i> WALL. | <i>Elodina egnatia bouruensis</i> WALL. | |

| | BOISDUVAL. | WALLACE. | DE NICÉVILLE | HOLLAND. | SEITZ. | a.o. |
|-------------------------|------------------------|----------------------------------|------------------------------|------------------------------|---|---|
| m. R. | — | — | — | <i>Delias rothschildi</i> | <i>Delias dori-mene rothschildi</i> HOLL. | |
| m. | — | — | — | — | — | <i>Delias apatela</i> J. & P. |
| m. | — | — | — | — | — | <i>Delias prouti</i> J. & T. |
| <i>Pieridae.</i> m. | — | — | — | — | — | <i>Delias schassmanni</i> J. & T. |
| m. | — | — | — | — | — | <i>Delias eschatia</i> J. & T. |
| m. | — | — | — | — | — | <i>Delias vidua</i> J. & T. |
| NR. | <i>Pieris phillyra</i> | <i>Thyca phillyra philotis</i> | <i>Delias philotis</i> WALL. | <i>Delias philotis</i> WALL. | <i>Delias caeneus philotis</i> WALL. | |
| m. R. | — | — | — | — | — | <i>Delias persephone serrata</i> v. E. |
| m. NR. | — | <i>Thyca isse echo</i> | <i>Delias echo</i> WALL. | <i>Delias echo</i> WALL. | <i>Delias isse echo</i> WALL. | |
| c. ♂. ♀ VR | — | <i>Pieris jaël</i> | <i>Huphina jaël</i> WALL. | <i>Huphina jaël</i> WALL. | <i>Huphina aspasia jaël</i> WALL. | |
| c. R. | — | <i>Pieris rachel</i> BSD. | <i>Huphina rachel</i> BSD. | — | — | <i>Huphina perimale moluccensis</i> v. E. |
| c. NR. | — | <i>Tachyris ada</i> CRAM. | <i>Appias ada</i> CRAM. | <i>Appias ada</i> CRAM. | <i>Appias ada leucosticta</i> BUTL. | |
| c. ♂ NR ♀ | — | <i>Tachyris bouruensis</i> | <i>App. bouruensis</i> WALL. | <i>App. bouruensis</i> WALL. | <i>App. nero bouruensis</i> WALL. | |
| VR. m. VR. | — | <i>Tachyris paulina</i> CR. | <i>App. albina</i> BSD. | <i>App. albina</i> BSD. | <i>App. albina albina</i> BSD. | |
| c. NR. | — | | | <i>App. paulina</i> CRAM. | | |
| VR. | — | <i>Tachyris jacquinotii</i> LUC. | <i>App. cynisca</i> WALL. | <i>App. jacquinotii</i> LUC. | <i>App. melania cynisca</i> WALL. | |
| R. | — | <i>Tachyris cynisca</i> | <i>App. leis</i> H. | <i>Appias elia-da</i> HEW. | <i>Saletara liberia chrysoberylla</i> FRUHST. | |
| c. VC. | — | <i>Callidryas alcmeone</i> CR. | <i>Cat. crocale</i> CRAM. | <i>Cat. crocale</i> CRAM. | <i>Catopsilia crocale</i> BUTL. | |
| m. VR. | — | | | | <i>Catopsilia flaviva</i> BUTL. | |
| (Doubtfully indigenous) | — | — | — | <i>Cat. catilla</i> CRAM. | <i>Catopsilia pomona catilla</i> CRAM. | |

| | BOISDUVAL. | WALLACE. | DE NICÉVILLE | HOLLAND. | SEITZ. | a.o. |
|----------------------------|--|---------------------------------|---|--|---|--|
| c. R. | — | <i>Ter. drona</i> HORSF. | <i>Terias zo- raide</i> FELD. | <i>Terias drona</i> HORSF. | <i>Terias liby- thea drona</i> HORSF. | |
| c. C. | — | <i>Terias di- versa</i> | <i>Terias bifor- mis</i> BUTL. | <i>Terias hecabe</i> <i>diversa</i> WALL. | <i>Terias hecabe</i> <i>diversa</i> WALL. | |
| c. C. | — | <i>Terias blan- da</i> BSD. | — | — | — | <i>Terias blanda</i> <i>cungata</i> FRUHST. |
| c. R. | — | — | — | <i>Terias tila- ha</i> HORSF. | ? | <i>Terias nor- bana depicta</i> FRUHST. |
| <i>Pieridae.</i> c. C. | — | <i>Ter. candida</i> CRAM. | <i>Ter. candida</i> CRAM. | <i>Ter. candida</i> CRAM. | <i>Ter. candida</i> <i>candida</i> CRAM. | <i>Ter. candida</i> <i>exalbescens</i> JURR. |
| c. VR. | — | — | — | — | — | <i>Gandaca hari- na aiguina</i> FRUHST. |
| c. R. m. VR. | — | <i>Iphias leuco- gynia</i> | <i>Hebomoia leu- cogynia</i> WALL. | <i>Hebomoia leu- cogynia</i> WALL. | <i>Hebomoia leu- cippe leuco- gynia</i> WALL. | |
| c. ♂ NR., ♀ VR. | — | — | — | <i>Eronia jobaea</i> BSD. | <i>Pareronia jo- baea aeboja</i> FRUHST. | |
| 27 | 1 | 15 | 14 | 14 | 17 | 11 |
| c. R. | — | — | — | <i>Anosia plex- ippus</i> L. | <i>Danais arch- ippus</i> F. | |
| c. R. | — | — | — | <i>Limnas peti- lia</i> STOLL. | <i>D. chrysippus</i> <i>petilia</i> STOLL. | |
| C. | — | — | — | <i>Salatura phi- lene</i> CRAM. | <i>D. philene phi- lene</i> CRAM. | |
| <i>Danaidae.</i> c. NR. | — | — | <i>D. (Nasuma)</i> <i>ismare</i> CR. | <i>Nasuma isma- re</i> CRAM. | <i>D. ismare je- licia</i> FRUHST. | |
| c. VR. | — | — | — | <i>Tirumala ha- mata</i> MACL. | — | <i>D. melissa</i> <i>nigra</i> MACL. |
| C. | — | — | <i>D. (Ravadeba)</i> <i>lutescens</i> B. | <i>Ravadeba lu- tescens</i> BUTL. | <i>D. cleona lu- tescens</i> BUTL. | |
| C. | { <i>D. juventa</i> CR. <i>D. sobrina</i> | — | { <i>D. (Radena)</i> <i>juventa</i> CR. <i>D. (Radena)</i> <i>meganira</i> G. <i>D. (Radena)</i> <i>sobrina</i> BSD. | { <i>Radena buru- ensis</i> HOLL. | <i>D. juventa bu- ruensis</i> HOLL. | |
| c. C. m. R. | <i>Idea aza</i> | — | <i>Hestia (Nec- taria) aza</i> BSD. | <i>Hestia aza</i> BSD. | <i>H. aza aza</i> BSD. | |

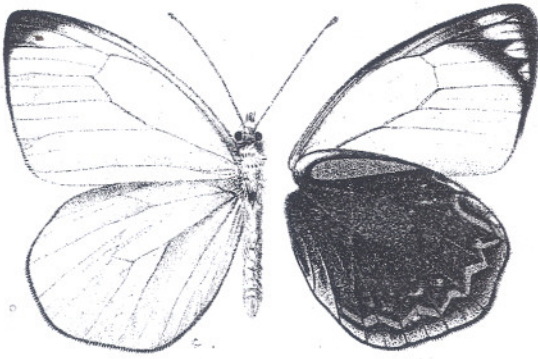
| | BOISDUVAL | WALLACE. | DE NICÉVILLE | HOLLAND | SEITZ. | a.o. |
|--------|---|----------|---|------------------------------------|--|--------------------------------------|
| NR. | <i>Euploea melina</i> GODT. | — | <i>E. (Vadebra) melina</i> GODT. | <i>Vadebra doher tyi</i> HOLL. | <i>E. climena doher tyi</i> HOLL. | |
| C. | — | — | <i>E. (Gamatoba) spiculifera</i> MOORE. | <i>Gamatoba spiculifera</i> MOORE. | <i>E. spiculifera spiculifera</i> MOORE. | |
| VR. | <i>E. alcathoë</i> GODT. | — | <i>E. (Gamatoba) melancholica</i> BUTL. | — | <i>E. alecto alecto</i> BUTL. | |
| m. NR. | <i>E. duponchelii</i> | — | <i>E. (Gamatoba) alcathoë</i> G. | | | |
| | | | <i>E. (Betanga) duponchelii</i> BSD. | <i>Betanga duponchelii</i> BSD. | <i>E. duponchelii duponchelii</i> BSD. | |
| c. R. | — | — | <i>E. (Stictoploea) watsoni</i> MOORE. | <i>Stictoploea watsoni</i> MOORE. | <i>E. watsoni watsoni</i> MOORE. | |
| c. R. | — | — | — | <i>Calliploea infantilis</i> BUTL. | — | <i>E. salabanda cledonia</i> FRUHST. |
| C | — | — | <i>E. semicirculus</i> BUTL. | <i>E. semicirculus</i> BUTL. | <i>E. phaenarete hollandi</i> FRUHST. | |
| C. | <i>E. hisme</i> <i>E. eunice</i> GODT. | — | <i>E. (Salpinx) hisme</i> BSD. | <i>Salpinx buruana</i> MOORE. | <i>E. nemertes hisme</i> BSD. | |
| | | | <i>E. (Salpinx) bouruana</i> MOORE. | | | |
| | | | <i>E. (Salpinx) leucostictos</i> GM. | | | |
| R. | <i>Hamadryas assaricus</i> CRAM. | — | <i>Tellervo assarica</i> CRAM. | <i>Hamadryas assarica</i> CRAM. | <i>Tellervo zoi-lus assarica</i> CRAM. | |
| 17 | 7 | 0 | 12 | 16 | 15 | 2 |
| m. NR. | — | — | <i>Ypthima asterope</i> KLUG. | — | — | <i>Ypthima pusilla</i> FRUHST. |
| c. NR. | — | — | <i>Lethe arete</i> CRAM. | <i>Lethe europa arete</i> CRAM. | <i>Lethe europa arete</i> CRAM. | |
| NR. | <i>Satyrus manipa</i> BSD. | — | <i>Mycal. (Mydosama) sirius</i> F | <i>Mycal. sirius</i> F. | <i>Mycalesis sirius canicula</i> FRUHST. | |
| C. | — | — | <i>Mycal. (Mydosama) remulia</i> CR. | <i>Mycal. remulia</i> CRAM. | <i>M. terminus wakolo</i> FRUHST. | |

| | BOISDUVAL. | WALLACE. | DE NICÉVILLE | HOLLAND. | SEITZ. | a.o. | |
|---------------|------------|---------------------------------|---|----------------------------------|--|--|----------------------------|
| Satyridae. | R. | — | — | <i>M. (Calysisme) perseus</i> F. | <i>Mycal. perseus</i> F. | <i>M. perseus lassis</i> HEW. | |
| | R. | — | — | <i>M. (Orsotriaena) medus</i> F. | <i>Mycal. medus</i> F. | <i>Orsotriaena medus licium</i> FRUHST. | |
| | C. | — | — | <i>Melanitis leda</i> L. | <i>Mel. leda bou-ruana</i> | <i>Mel. leda bou-ruana</i> HOLL. | |
| | m. NR. | — | — | <i>Hipio constantia</i> CRAM. | <i>Mel. constantia</i> CRAM. | <i>Mel. constantia dictatrix</i> FRUHST. | |
| | m. NR. | — | — | <i>Hipio amabilis</i> BSD. | <i>Mel. amabilis</i> BSD. | <i>Mel. amabilis kajelana</i> FRUHST. | |
| | ? | — | — | — | <i>Mel. ribbei</i> STAUD. | <i>Mel. velutina gigantea</i> FRUHST. | |
| c. VR. | — | <i>Elymnias viminalis</i> WALL. | <i>Elymn. (Dyc-tis) viminalis</i> WALL. | <i>Elymn. vimi-nalis</i> WALL. | <i>Elymn. vitellia viminalis</i> WALL. | | |
| 11 | 1 | 1 | 10 | 10 | 10 | 1 | |
| Amathusiidae. | m. NR. | — | — | — | <i>Tenaris urania</i> L. | <i>Taenaris urania hollandi</i> FRUHST. | |
| | c. C. | — | — | — | <i>T. buruensis</i> FORBES. | <i>T. selene selene</i> WESTW. | |
| 2 | 0 | 0 | 0 | 2 | 2 | 0 | |
| Nymphalidae. | VR. | — | — | — | — | <i>Ergolis merionoides buruensis</i> FRUHST. | |
| | VR. | — | — | — | — | — | <i>Cupha crameri</i> FELD. |
| | m. R. | — | — | <i>Cupha lampetia</i> L. | <i>Messaras lampetia</i> L. | <i>Cupha lampetia mirona</i> FRUHST. | |
| | NR. | — | <i>Atella egista</i> CRAM. | <i>Atella egista</i> CRAM. | <i>Atella egista</i> CRAM. | <i>Issoria sinha buruana</i> FRUHST. | |
| | ♂ C. ♀ VR. | — | — | <i>Cynthia arsinœ</i> CRAM. | <i>Cynthia deione</i> ERICHS. | <i>Cynthia arsinœ buruana</i> FRUHST. | |
| c. NR. | — | — | — | <i>Cethosia buruana</i> | <i>Cethosia biblis buruana</i> HOLL. | | |

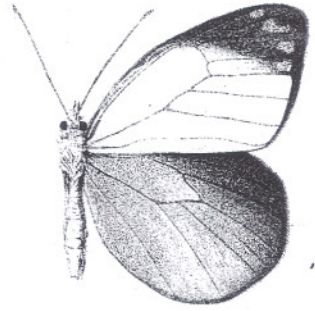
| | BOISDUVAL. | WALLACE. | DE NICÉVILLE | HOLLAND. | SEITZ. | a.o. |
|-------------------------------|---------------------------|-------------------------------|--|---|--|--------------------------------------|
| m. R. | — | — | — | <i>Cethosia cydippe</i> L. | <i>Cethosia chrysippe iphigenia</i> FRUHST. | |
| NR. | — | — | <i>Precis hedonia</i> L. | <i>Precis hellanis</i> FELD. | <i>Precis hedonia hedonia</i> L. | |
| VR. | — | — | — | <i>Junonia atlites</i> L. | <i>Prec. atlites atlites</i> L. | |
| NR. | — | — | <i>Junonia erigone</i> CRAM. | <i>Junonia erigone</i> CRAM. | <i>Prec. erigone antigone</i> FELD. | |
| Nymphalidae. VR. | — | — | — | — | — | <i>Prec. vllida vllida</i> F. |
| NR. | — | — | — | — | — | <i>Prec. orithya orthosia</i> GODT. |
| m. C. | — | — | <i>Symbrenthia hippoclus</i> CR. | <i>Symbrenthia hippoclus</i> CR. | <i>Symbrenthia hippoclus buruanus</i> FRUHST. | |
| m. NR. | — | — | — | <i>Mynes dohertyi</i> | <i>Prothoë australis dohertyi</i> HOLL. | <i>Mynes geofroyi dohertyi</i> HOLL. |
| (Doubtfully indigenous) R. | — | — | — | — | — | <i>Mynes plateni</i> STAUD. |
| NR. | — | <i>Diadema antilope</i> CRAM. | <i>Salamis sabina</i> CRAM. <i>Hypolimnias antilope</i> CR. | <i>Yoma sabina</i> CRAM. <i>Hypolimnias antilope</i> CR. | <i>Yoma sabina sabina</i> CRAM. <i>Hypolimnias antilope maglovius</i> FRUHST. | |
| NR. | <i>Diadema alimena</i> L. | <i>Diadema alimena</i> L. | <i>Hyp. alimena</i> L. | <i>Hyp. alimena</i> L. | <i>Hyp. alimena senia</i> FRUHST. | |
| VR. | — | — | — | — | — | <i>Hyp. misippus</i> L. |
| C. | <i>Diadema bolina</i> L. | <i>Diadema bolina</i> L. | <i>Hyp. bolina</i> L. | <i>Hyp. lisianassa</i> CRAM. | <i>Hyp. bolina lisianassa</i> CRAM. | |
| m. C. c. VR. | — | <i>Diadema pandora</i> | <i>Hyp. pandora</i> WALL. | <i>Hyp. pandora</i> WALL. | <i>Hyp. pandarus pandora</i> WALL. | |
| NR. | — | — | <i>Doleschallia crameri</i> DIST. | <i>Doleschallia bisaltide</i> CR. | <i>Doleschallia bisaltide polibete</i> CRAM. | |
| NR. | — | — | — | <i>Dolesch. melana</i> STGR. | <i>Dolesch. melana melana</i> STGR. | |
| NR. | — | — | — | <i>Cyrestis paulinus</i> FELD. | <i>Cyrestis paulinus paulinus</i> FELD. | |

| | BOISDUVAL | WALLACE. | DE NICÉVILLE | HOLLAND | SEITZ. | a.o. |
|-------------|---------------------------|-----------------------------|--|---|--|------|
| VR. | — | — | — | — | <i>Cyr. ceramensis sicca</i> FRUHST. | |
| NR. | — | — | — | — | <i>Cyr. telamon buruensis</i> MARTIN. | |
| R. | <i>Cyr. thyonus</i> CRAM. | — | <i>Cyr. thyonus</i> CRAM. | <i>Cyr. thyonus</i> CRAM. | <i>Cyr. thyonus buruanus</i> MARTIN. | |
| c. C. | — | — | — | <i>Neptis neri-phoides</i> | <i>Rahinda mystia neriphoides</i> HOLL. | |
| Nymphalidae | C. | <i>Limenitis venilia</i> L. | <i>Nept. venilia</i> L. | <i>Nept. venilia</i> L. | <i>Limenitis venilia</i> L. | |
| | R. | — | <i>Nept. (Phaedy ma) heliodora</i> CRAM. | <i>Nept. heliodora</i> CRAM. | <i>Elymnias viminalis</i> WALL. | |
| c. NR. | — | — | — | <i>Apaturina erminea</i> CRAM. | <i>Apaturina erminea</i> CRAM. | |
| R. | <i>Minetra nodrica</i> | — | <i>Parthenos nodrica</i> BSD. | <i>Parthenos nodrica</i> BSD. | <i>Parthenos nodrica</i> BSD. | |
| ♂ NR. ♀ VR. | <i>Lexias aeropus</i> L. | — | <i>Euthalia (Lexias) aeropus</i> L. | <i>Symphaedra aeropus</i> L. | <i>Euthalia aeropus helvidius</i> FRUHST. | |
| c. VR. | — | — | — | <i>Dichorragia ninus</i> FELD. | <i>Dichorragia ninus</i> FELD. | |
| c. VR. | — | — | — | <i>Apaturina erminea</i> CRAM. | <i>Apaturina mirona</i> FRUHST. | |
| NR. | — | — | — | <i>Eulepis pyrrhus buruanus</i> R. & J. | <i>Eriboea pyrrhus buruanus</i> R. & J. | |
| VR. | — | — | — | — | <i>Charaxes mars madensis</i> | |
| 37 | 6 | 5 | 17 | 28 | 32 | 6 |
| m: NR. | — | — | — | — | <i>Miyana mo. uc-cana buruensis</i> ROTHSCH. | |

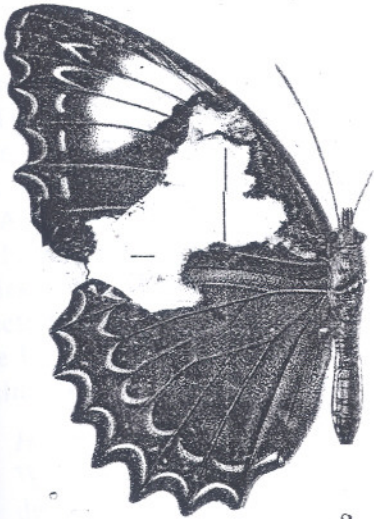
Leiden, 15 June 1926.



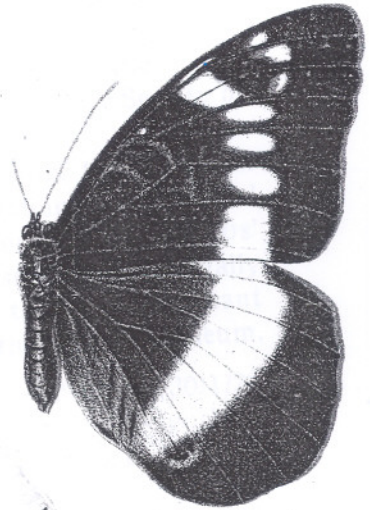
1.



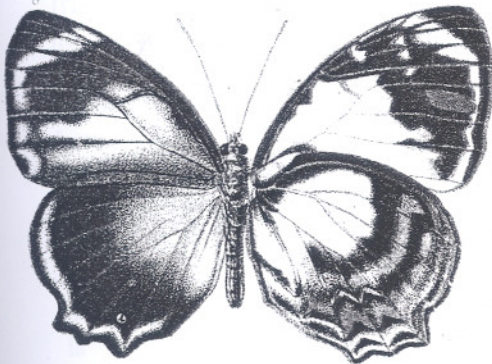
2.



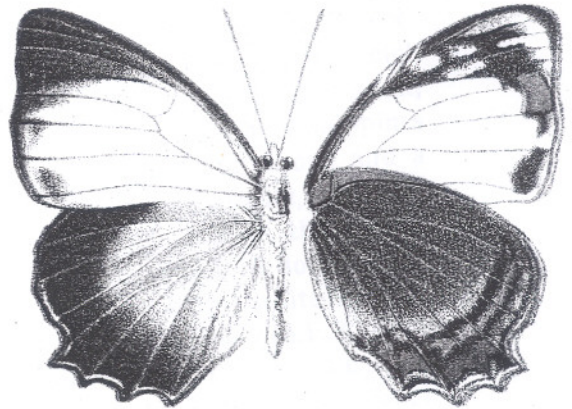
3.



4.



5.



6.

R. v. E. ad nat. pinx.

Fa. P. W. M. Trap impr.

- 1. *Delias persephone serrata* m. ♂
- 3. *Cethosia chrysippe iphigenia* Fruhst. ♀
- 5. *Mynes plateni* Staud. ♀

- 2. *D. persephone serrata* m. ♀
- 4. *Euthalia aeropus helvidius* Fruhst. ♀
- 6. *Mynes geoffroyi dohertyi* Holl. ♀