

A NEW MEMBRACID FROM WEST JAVA.

By

W. D. FUNKHOUSER

(University of Kentucky, Lexington).

In a collection of *Membracidae* recently received by the writer for determination, through the courtesy of Mr. M. A. LIEFTINCK of the Zoological Museum of Buitenzorg, Java, is a new species which is here described and figured as follows:

Xiphistes maculipennis sp. nov. (Fig. 1).

Yellow with front of head, front of metopidium and suprahumeral dark brown; finely punctate, sparingly pubescent; suprahumeral projecting directly outward; posterior process reaching just beyond internal angles of tegmina; tegmina yellowish brown with a conspicuous dark brown spot in the center; undersurface and legs yellow, red markings on clypeus and sides of metopidium.

Technical description:

Head subquadrate, twice as wide as high, dark brown, roughly sculptured, finely punctate, densely pubescent, base arcuate; eyes light brown; ocelli large, conspicuous, glassy, equidistant from each other and from the eyes and situated about on a line drawn through centers of eyes; clypeus bright red, twice as long as broad, subquadrate, base broadly emarginate, tip truncate, clypeus extending for two-thirds its length below lateral margins of genae; lateral margins of genae convex, edged with yellow.

Pronotum yellow, finely punctate, sparingly pubescent; metopidium convex, wider than high, decorated with a large round dark brown spot in center and a smooth bright red fossa above each eye; humeral angles heavy, triangular, blunt, extending outward slightly farther than the eyes; median carina strongly percurrent; suprahumeral horns short, heavy, triangular, extending directly outward and not at all upward

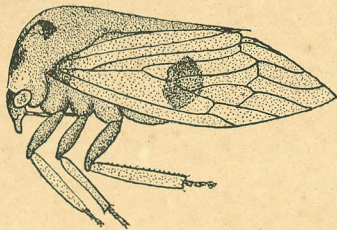


Fig. 1. *Xiphistes maculipennis*, sp. nov.

or forward, as long as the distance between their bases, upper surface flat and nodulate, lower surface ridged, tip acute; posterior process straight, yellow, punctate, tectiform, gradually acuminate, tip sharp and extending just beyond internal angles of tegmina; scutellum narrowly exposed on each side.

Tegmina long, narrow, lanceolate, pointed; yellow, opaque, slightly pubescent, with a large dark brown circular spot in center; base narrowly coriaceous, light brown; three apical and five discoidal cells; apical veins slightly curved; no apical limbus.

Sides of thorax and undersurface of body light yellow; femora light brown; tibiae somewhat flattened and foliaceous, yellow; tarsi dark brown.

Length from front of head to tips of tegmina 6.4 mm.

Width between tips of suprahumeral horns 3.5 mm.

Type: male.

Type locality: Depok, West Java, 100 m alt.

Described from a single specimen taken at the type locality by M. A. LIEFTINCK on November 25, 1933. Type in author's collection.

This species may be at once recognized by the large brown spot on the tegmina and by the brilliant red markings on the metopidium and the clypeus.
