

NEW INDONESIAN LAMINAE (COLEOPTERA, CERAMBYCIDAE)

by

E. FORREST GILMOUR and STEPHAN V. BREUNING

(Doncaster, England)

(Paris, France)

The following new species and lower categories, in major part formed part of a collection of Cerambycidae sent for identification from the Museum Zoologicum Bogoriense, Bogor, (Java) Republic of Indonesia, through the kind offices of Mr. SAMPURNO KADARSAN, the Director, at whose request types of all the new species are placed in the E. F. GILMOUR collection.

Tribus: AGAPANTHIINI (Hippopsini)

Anandra griseipennis BREUN., subsp. *floresica* nov.

(Plate 1, figs. 1 - 2)

Like the typical form, but the scape impunctate, pronotum a little less finely transversely striated, elytra covered with dark brown pubescence and each marked with five narrow longitudinal light grey vittae, which gradually broaden themselves at about the end of the basal quarter and again at the middle of their length.

Length: 10 - 11 mm.

Breadth: 2.5 - 2.7 mm.

Locality: Flores: Rana Mese (1300 - 1500 m) (9. IV. 1958, leg. A. M. R. WEGNER) (♂, Holotype)
: Mborong (31. III. 1958, A. M. R. WEGNER) (♂, Paratype).

Holotype (male) placed in the E. F. GILMOUR collection; Paratype (male) in the Museum Zoologicum Bogoriense.

Tribus: PTEROPLIINI (Niphonini)

Pterolophia (s.str.) *melanura* Pasc., subsp. *baweanensis* nov.

(Plate 1, fig. 3)

Like the typical form, but the head and pronotum more finely punctured, the pronotum also punctured a little less densely. Elytra without transverse fasciae in the posterior half, marked there rather with narrow longitudinal yellowish vittae on brown ground colour.

The female is the smallest specimen.

Length: 9 - 10.5 mm.

Breadth: 3.1 - 3.8 mm.

Locality: Bawean Island: (3. VI. 1954, leg. A. HOOGERWERF) (♂, Holotype); *idem* (9. VI. 1954) (♀, Allotype); *idem* (30. V. 1954) (♂, Paratype).

Holotype (male) placed in E. F. GILMOUR collection; Allotype (female) and one Paratype (male) in the Museum Zoologicum Bogoriense.

***Pterolophia* (*Trichopraonetha*) *subalbofasciata* sp. nov.**

(Plate 1, fig. 4)

Closely allied to *Pterolophia albofasciata* BREUN., but the lower lobes of the eyes as long as the genae, the elytral postbasal tumescence surmounted with a long narrow fascicule of black setae and on each elytron a second short slender not very high postmedian discal crest equally surmounted with black erect setae.

Body pubescence brown, intermixed with yellowish. Pronotum with a narrow longitudinal lineiform yellow vitta. Scutellum with borders yellow. Elytra with two large transverse white common sutural maculae, both interrupted by the punctures; a median which passes on each side and thinning to middle of disc and a preapical. Abdomen with first four segments ochraceous pubescent. Antennal segments from third with the apical two-thirds rather dark brown pubescent.

Length: 11.5 mm.

Breadth: 4.3 mm.

Locality: Borneo: 125 m Tabang, Bengen River (3. X. 1956, A. M. R. WEGNER)

Holotype (male) placed in the E. F. GILMOUR collection. Unique.

***Cenodocus borneensis* sp. nov.**

(Plate 1, fig. 5)

Closely allied to *Cenodocus antennatus* THOMS., but a little broader, the third antennal segment scarcely twice as long as the scape, genae as long as the lower lobes of the eyes, pubescence of body, legs and first two antennal segments reddish-brown; each elytron with two rather broad transverse white fasciae, a premedian and a postmedian, which do not reach the suture at all but which unite at the lateral border, and a preapical transverse white fascia; the mesepisterna, metepisterna, metasternum

and first two abdominal ventrites covered in greater part with white pubescence.

Length: 14.2 mm.

Breadth: 6 mm.

Locality: Borneo: 125 m Tabang, Bengen River (22. X. 1956, A. M. R. WEGNER).

Holotype (female) placed in the E. F. GILMOUR collection. Unique.

Tribus: AGNIINI

Epepeotes luscus F., var. *subuniformis* nov.

(Plate 1, fig. 6)

Like the typical form, but the elytra covered, with the exception of the basal black macula, with a whitish-grey pubescence and finely marbled with light brown.

Length: 20 - 24 mm.

Breadth: 6.7 - 8 mm.

Locality: Sumatra: P. Sebuk (IV. VI. 1955, leg. A. M. R. WEGNER) (2 ♀).

Holotype (♀) placed in the E. F. GILMOUR collection; Paratype (♀) in Museum Zoologicum Bogoriense.

Tribus: RHODOPINI

FALSOZEARGYRA gen. nov.

Elongate-oval. Antennae slender, as long as the body, rather densely fringed below with moderately long setae; scape short, claviform; third segment a little shorter than the fourth, a little longer than the scape; fourth segment distinctly longer than each of the following segments. Antennal tubercles widely separated and very little projecting. Eyes coarsely faceted, very strongly emarginate (almost subdivided). Frons very broad. Pronotum more than twice as broad as long, strongly rounded on the sides, with two straight transverse sulci, a premedian and a postmedian. Elytra elongate, strongly convex, distinctly broader at the base than the pronotum, strongly narrowed posteriorly, narrowly rounded apically, and each provided with a very narrow, scarcely indicated, basal crest. Head retractile. Prosternal process narrow, lower than the coxae and curved. Mesosternal process gradually inclined anteriorly. Metasternum of normal length. Mesocoxal cavities open. Legs of average length, femora strongly claviform; mesotibiae emarginate; tarsal claws divaricate. Body clothed with not very numerous short erect setae. Legs with longer erect setae.

Genotype: *Falsozeargyra wegneri* gen. nov., sp. nov.

This new genus is placed in the Tribe RHODOPINI at the side of the genus *Falsostesilea* BREUN., from which it differs especially by the sides of the pronotum strongly rounded and the mesocoxal cavities open. It very much resembles the genus *Euryzeargyra* BREUN., but this has the tarsal claws divergent.

Falsozeargyra wegneri sp. nov.

(Plate 2, fig. 1)

Dark brown, covered with light reddish-brown pubescence and vaguely marbled with darker brown. Elytra sprinkled with rather numerous very small fascicules of white setae. Tibiae with a broad postmedian yellowish annula. Antennae with yellowish-brown pubescence, the third segment except basally and the apical part of segments four to eleven dark brown pubescent.

Eyes with lower lobes one and a half times as tall as genae. Scutellum broad, semicircular. Elytra rather densely and not very finely punctured. Sterna with lateral parts not very densely and rather finely punctured.

Length: 10 mm.

Breadth: 3.9 mm.

Locality: W. Java: P. Sangijang, (9. VI. 1955, leg. A. M. R. WEGNER).

Holotype placed in the E. F. GILMOUR collection. Unique.

Philicus (s. str.) *floresicus* sp. nov.

(Plate 2, fig. 2)

Black, head, pronotum, underside of body, femora, tibiae and first three antennal segments covered with light grey pubescence, the pronotal disc in large part devoid of pubescence. Scutellum with whitish-grey pubescence. Elytra covered with dark brown pubescence, and marked with numerous rather large bluish-grey maculae. Tarsi bluish-grey pubescent. Antennal fourth segment with basal three-quarters white pubescent; apical quarter of third and fourth segments and the whole of segments five to eleven dark brown pubescent.

Antennal scape slender; third antennal segment distinctly longer than fourth, much longer than scape, fourth segment much longer than the following segments. Eyes with lower lobes distinctly longer than the genae. Frons feebly trapeziform. Head and pronotum impunctate. Pronotum twice as broad as long, provided with two transverse straight sulci, a

premedian and a postmedian, and with a rather large lateral conical pointed spine. Elytra feebly truncate apically, both angles rounded, densely and very finely punctured on the anterior three-quarters and each provided with a longitudinal tumescence near the suture, running over the posterior two-thirds.

Length: 8.5 mm.

Breadth: 2.5 mm.

Locality: Flores: Rana Mese (1300 - 1500 m) (7. IV. 1958, A. M. R. WEGNER). (? ♂).

Holotype placed in the E. F. GILMOUR collection. Unique.

Tribus: SAPERDINI

Serixia (s. str.) *palliata* PASC., var. *rufithorax* nov.

(Plate 2, fig. 3)

Like the typical form, but all the genae and all the pronotal disc yellow; intermediate and posterior femora with basal half also yellow.

Length: 8 mm.

Breadth: 2.3 mm.

Locality: N. W. New Guinea: Sorong, Malano (8. VII.-14. VIII. 1948, M. A. LIEFTINCK).

Holotype (female) placed in the E. F. GILMOUR collection. Unique.

Serixia (s. str.) *palliata* PASC., var. *parterufithorax* nov.

(Plate 2, fig. 4)

Like the var. *rufithorax* GILMOUR & BREUNING described above, but the pronotum with two large discal premedian blackish maculae covering the major part of the anterior half of the disc.

Length: 7.5 mm.

Breadth: 2.1 mm.

Locality: Misool Isl. (W.): (0-75 m alt.) (8. IX.-20. X. 1948, M. A. LIEFTINCK).

Holotype (female) placed in the E. F. GILMOUR collection. Unique.

Glenea (s. str.) *wegneri* sp. nov.

(Plate 2, fig. 5)

Dark red, covered with dark brown pubescence. Head, with the exception of three longitudinal vittae on the vertex, the pronotum with the exception of four longitudinal vittae — the two discal rather broad, irregular, very closely approaching on the median line, not quite reaching the base — and on each side a short lineiform median mark placed at the

limit of the disc and lateral part, the scutellum, the underside, the femora and tibiae covered with yellow pubescence. Elytra marked with yellow as follows: — on each elytron a rather broad longitudinal sutural vitta, united posteriorly with a quadrangular apical macula, a similar discal vitta, united entirely at its inner border with the sutural band but only developed at the basal quarter and from the middle as far as the apical macula, a vitta at the inner border of the humeral costa running over the basal quarter and a small median macula at the inner border of the humeral costa running over the basal quarter and a small median macula at its inner border of the humeral costa, these two markings united internally to the discal vitta, and a small circular macula at the beginning of the apical quarter, equally at the inner border of the humeral costa, and a subhumeral vitta. Clypeus, upper labrum, palpi, abdomen, coxae, femora and tibiae with a fundamental light red colour. Tarsi dark brown with fine grey pubescence. Antennae black with dark brown pubescence.

Elongated. Antennae a little shorter than the body (♀). Eyes with lower lobes distinctly longer than the genae (♀). Frons one and a half times as broad as one of the lower lobes of the eyes (♀). Head and pronotum very densely and very finely punctured. Pronotum transverse. Elytra elongate, emarginate apically, sutural angle produced in a very small spine, marginal angle produced in a long slender spine; not very densely and coarsely punctured, the punctures becoming more fine towards the suture and in the posterior half. Each elytron with two longitudinal straight, prominent costae, one humeral and one subhumeral, which unite before the apex to finish together at the apical spine. Metatarsi with first segment short. Tarsal claws divaricate.

Length: 12 mm.

Breadth: 4 mm.

Locality: Borneo: 125 m. Tabang, Bengen River (4. X. 1956, A. M. R. WEGNER).

Holotype (female) placed in the E. F. GILMOUR Collection. Unique.

This species approaches *Glenea referens* AURIV., but the elytral yellow pubescence is much more extensive, covering most of the discal basal third and broader from medially backwards, and the pronotum is slightly transverse, not longer than broad, amongst a few other differences.

Glenea (s. str.) *aeolis* THOMS. subsp. *reductemaculipennis* nov.

(Plate 2, fig. 6)

Like the typical form, but the median discal macula of the elytra is of transverse shape and reaches the internal border of the humeral costa;

the postbasal macula and premedian macula at the internal border of the humeral costa are lacking.

Length: 11.3 mm.

Breadth: 3.2 mm.

Locality: Java: P. Peutjang, Ujung-Kulon (2. VIII. 1955, leg. A. M. R. WEGNER).

Holotype (female) placed in the E. F. GILMOUR collection. Unique.

Glenea (Acutoglenea) numerifera THOMS. subsp. **subhumero-interrupta** nov.

(Plate 2, fig. 7)

Like the typical form, but the humeral vitta reduced to a short streak running over the basal quarter to a small circular preapical macula.

Length: 11.1 mm.

Breadth: 3.8 mm.

Locality: W. Java: P. Peutjang, Ujung-Kulon (2. VII. 1955, A. M. R. WEGNER).

Holotype (female) placed in the E. F. GILMOUR collection. Unique.

PSEUDOGLENEA gen. nov.

Very elongated. Antennae slender, about one and a quarter times as long as the body (broken in the type at the seventh segment), fringed beneath with short setae; scape moderately long and slender; third segment a little longer than the fourth or than the scape; fourth a little longer than the fifth. Antennal tubercles widely separated, not projecting. Eyes coarsely faceted, strongly emarginate. Pronotum scarcely transverse (♀), feebly constricted before the base, bearing two feeble transverse depressions, one anterior and one posterior. Elytra very elongate, distinctly broader than the pronotum at the base, very feebly narrowed from the humeri; emarginate apically, sutural angle spinous, marginal angle produced in a triangular pointed lobe; provided with seriatly placed punctures; each with two straight and prominent complete costae, one humeral and one subhumeral, which unite before the apex to end in the apical lobe, and an external discal rather obtuse costa. Head not retractile. Prosternal process lower than the coxae, curved. Mesosternal process rounded anteriorly. Metasternum of normal length. Coxal cavities open. Legs of average length: femora rather slender; mesotibiae with a dorsal sulcus; tarsal claws divaricate. All the body, except the posterior half of the elytra and the legs clothed with moderately long erect setae. Abdomen with apical, fifth, ventrite elongate, longer than segments three and four united.

Genotype: *Pseudoglenea densepuncticollis* gen. nov., sp. nov.

This new genus differs from the genus *Glenea* especially by the length of the fifth abdominal ventrite and the presence of a discal costa on the elytra. From the genus *Nupserha* THOMS., it differs especially by the presence of a subhumeral costa.

***Pseudoglenea densepuncticollis* sp. nov.**

(Plate 2, fig. 8)

Reddish-yellow. Pronotum with a very narrow longitudinal median golden vitta. Each elytron with a very narrow golden sutural vitta and a short, narrow discal golden vitta running over the basal quarter. Abdomen with first two segments and median part of third segment covered with dense golden pubescence. Antennal segments starting from the fourth black.

Lower lobes of eyes a little longer than the genae (♀). Frons twice as broad as one of the lower lobes of the eyes (♀). Head and pronotum very densely and finely punctured. Scutellum semicircular. Elytra densely and coarsely punctured on the anterior two-thirds, the punctures placed serially.

Length: 10.5 - 12.5 mm.

Breadth: 2.7 - 3.1 mm.

Locality: Borneo: 125 m. Tabang, Bengen River (17. IX. 1956, A. M. R. WEGNER); *idem* (21. X. 1956) (2 ♀).

Holotype (female) placed in the E. F. GILMOUR collection; Paratype (female) in the Museum Zoologicum Bogoriense.

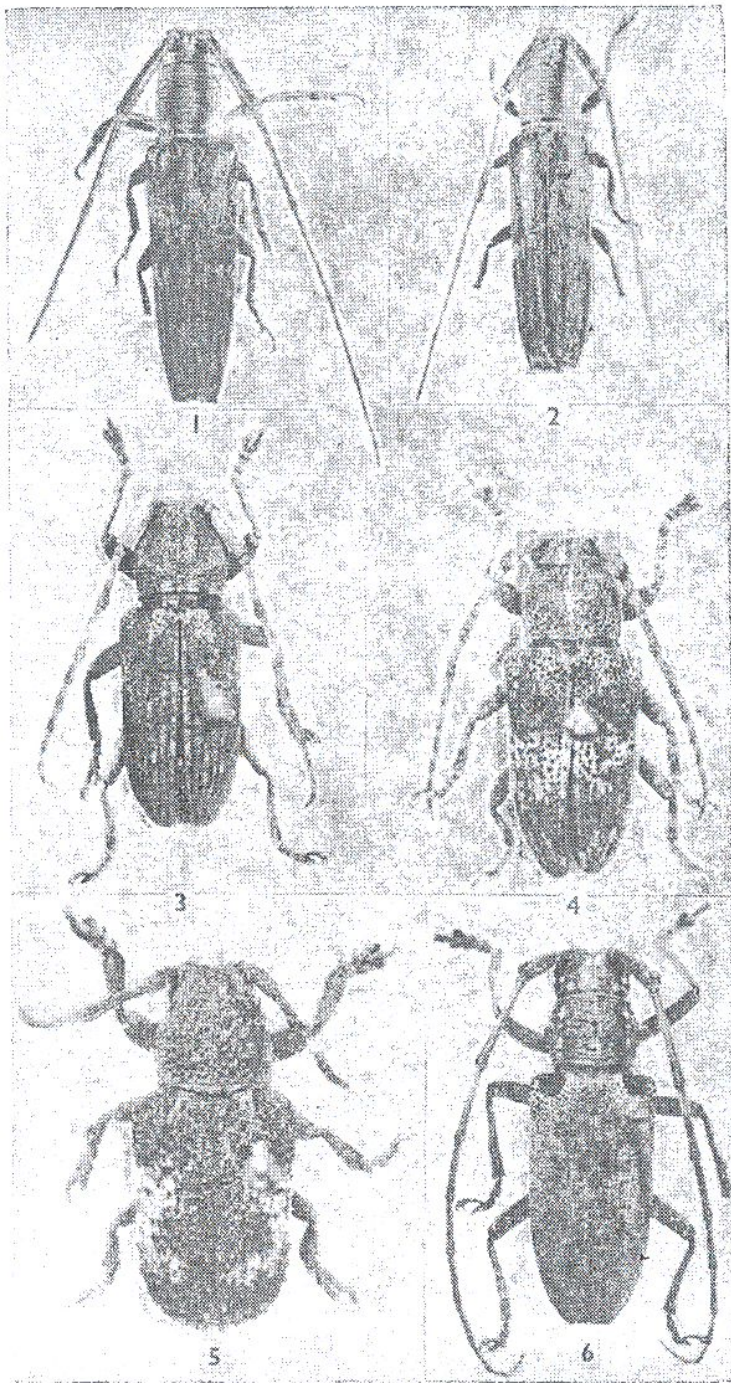


PLATE 1.

- Fig. 1. *Arandra griseipennis* BREUN., subsp. *floresica* nov. ♂, Holotype. (x 3.45). Flores.
 2. *idem*. ♂. Paratype. (x 3.4). Flores.
 3. *Pterolopkia* (s. str.) *melanura* PASC., subsp. *baweanensis* nov. ♂, Holotype. (x 3.14). Bawean Isl.
 4. *P.* (*Trichopraonetha*) *subalbofasciata* sp. nov. ♂. Holotype. (x 3). Borneo.
 5. *Cenodocus borneensis* sp. nov. ♀. Holotype. (x 2.9). Borneo.
 6. *Epepeotes luscus* F., var. *subuniformis* nov. ♀. Holotype (x 2). Sumatra.

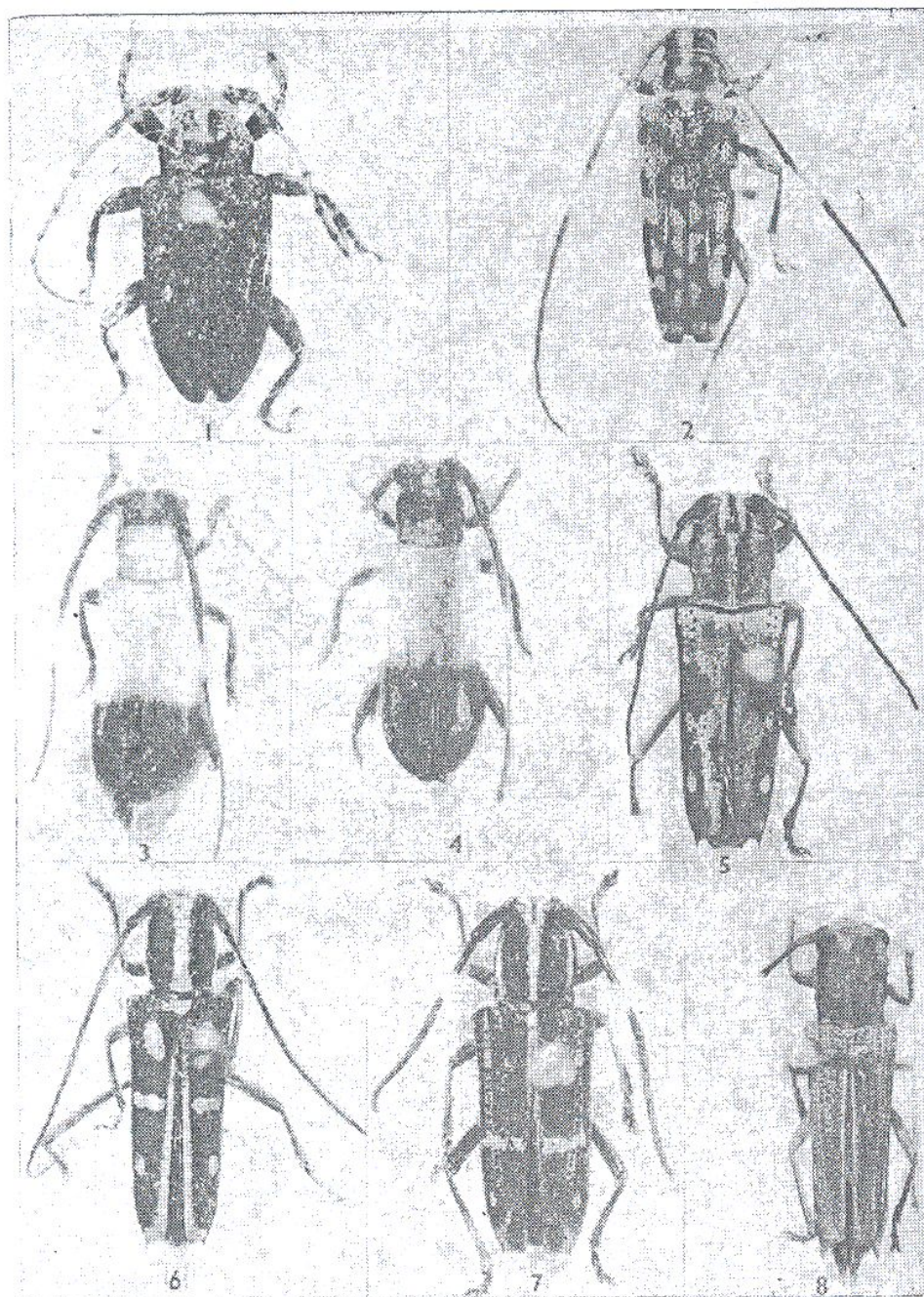


PLATE 2.

- Fig. 1. *Falsozeargyra wegneri* gen. nov., sp. nov. Holotype. (x 3.35) Java.
 2. *Philicus* (s. str.) *floresicus* sp. nov. Holotype. (x 3.9). Flores.
 3. *Serixia* (s. str.) *palliata* PASC., var. *rufithorax* nov. ♀. Holotype (x 4.1). New Guinea.
 4. *S.* (s. str.) *palliata* PASC., var. *parterufithorax* nov. ♀. Holotype. (x 4.5) Misool Isl.
 5. *Glenea* (s. str.) *wegneri* sp. nov. ♀. Holotype. (x 3.16) Borneo.
 6. *G.* (s. str.) *aeolis* THOMS., subsp. *reductimaculipennis* nov. ♀. Holotype. (x 3.27). Java.
 7. *G.* (*Acutoglenea*) *numerifera* THOMS., subsp. *subhumerointerrupta* nov. ♀. Holotype. (x 3.4). Java.
 8. *Pseudogtenea densepuncticollis* gen. nov., sp. nov., ♀. Holotype. (x 3.37). Java.