

## THE TYPES OF HOGERWERF'S NEW TAXA OF BIRDS IN THE COLLECTION OF THE MUSEUM ZOOLOGICUM BOGORIENSE, CIBINONG SCIENCE CENTRE BOGOR, INDONESIA

Sudaryanti<sup>1</sup>, S. Somadikarta<sup>2</sup>, and Darjono<sup>1</sup>

<sup>1</sup>Museum Zoologicum Bogoriense, Research Center for Biology, LIPI,  
Cibinong Science Centre, Bogor 16911, Indonesia  
e-mail: yanti\_mzb2003@yahoo.com; don\_darjono@yahoo.com

<sup>2</sup>Dept. of Biology, Faculty of Science and Mathematics,  
University of Indonesia, Depok Campus, Depok 16424, Indonesia  
e-mail: soma30@indo.net.id

### Abstract

From 1962 to 1967 Hoogerwerf described 16 new taxa of birds from Java and its satellite islands. His description of each new taxon was based on 3 to 34 specimens. Despite the regulations of the International Code of Zoological Nomenclature (ICZN), which clearly stipulated to designate the type specimens, Hoogerwerf had designated two and in one case three "type" specimens for each of the 14 out of his 16 new taxa, instead. In order to preserve stability of nomenclature, we reevaluate and designate the paratypes, lectotypes, paralectotypes of these Hoogerwerf's new taxa. These type specimens are deposited in the collections of MZB.

**Key words:** Aves, type specimen, ICZN, Java, MZB

### INTRODUCTION

In 1962, 1963, 1965, and 1967 Hoogerwerf described 16 new taxa of birds from Java and its satellite islands: Kangean (6° 55' S / 115° 30' E), Ijen Highland (8° 05' S / 114° 15' E), Tengger Mts (7° 55' S / 112° 55' E), Bawean (5° 46' S / 112° 40' E), Karimunjawa (5° 51' S / 110° 27' E), Ujung Kulon (6° 45' S / 105° 20' E), and Panaitan (6° 36' S / 105° 12' E) in Indonesia (Fig. 1). The description of each new taxon was based on 3 to 34 specimens.

Hoogerwerf seems not to have bothered with the existence of the International Code of Zoological Nomenclature (ICZN, 1961, 1<sup>st</sup> ed., & 1964, 2<sup>nd</sup>



Fig.1. Map of Java and its satellite islands

ed.). Article 73 (b) and the Recommendations following this article of the Code clearly stipulate that «If an author states in the description of a new nominal species should one specimen and only one is “the type” or uses some equivalent expression, that specimen is the holotype». Hoogerwerf had designated two and in one case three “type” specimens for each of the 14 out of his 16 new taxa, instead. It is most likely, Hoogerwerf had the opinion that the types of a taxon must consist of an adult male, an adult female, and in one case a juvenile male - if they are represented in the type series. Only in two of his nine papers that we listed in the references list below, Hoogerwerf (1962a: p. 146 footnote & 1962d: p. 18) mentioned that the types are in Museum Zoologicum Bogoriense (MZB), Bogor, Indonesia and the paratypes are in the Nationaal Natuurhistorisch Museum (*formerly* Rijksmuseum van Natuurlijke Historie - RMNH), Leiden, the Netherlands.

Article 73.2 of the ICZN, 4<sup>th</sup> ed., 1999 (*hereafter* the Code) clearly designates that “for a nominal species-group taxon established before 2000 [Art. 72.3] all specimens of the type series are automatically syntypes if neither a holotype [Art.72.1] nor a lectotype [Art. 74] has been fixed.” Therefore, according to this Article, that all the 14 type series of Hoogerwerf's new taxa which are published in 1962, 1963, and 1965, become syntypes. The other two

type series of Hoogerwerf's new taxa (*Batrachostomus javensis longicaudatus* Hoogerwerf, 1962 and *Anthreptes singalensis bantenensis* Hoogerwerf, 1967) consist of four male specimens and of nine (six males, a juv. male & two juv. females) specimens, respectively. In this case, Hoogerwerf had designated a single type (holotype) for each of these two new subspecies.

In order to preserve stability of nomenclature (Art. 74.1. and Recommendation 74F of the Code) we designate, in this paper, the lectotypes and paralectotypes of these 14 Hoogerwerf's new taxa. Some of the paralectotypes, which are listed as syntypes by Hoek Ostende *et al.* (1997) and Dekker (2003), are in the collection of RMNH. In this paper, we also list the MZB catalogue numbers of the paratypes of *Batrachostomus javensis longicaudatus* Hoogerwerf, 1962 and *Anthreptes singalensis bantenensis* Hoogerwerf, 1967, respectively (Recommendation 73D of the Code).

The orthography of the locality names are written according to the Indonesian New Spelling Rules adopted in August 1972. The 16 taxa below are listed according to the Peters' Checklist sequence.

## TAXONOMIC ACCOUNTS

### Family Turnicidae

#### *Turnix suscitator baweanus* Hoogerwerf, 1962 (Pl. I, Fig. 1)

*Ardea*, 50 (3-4), 1962c: p. 199. The description was based on six specimens (3♂♂ & 3♀♀) from Bawean Is. Two of these specimens, MZB 22783 (♂) and MZB 22785 (♀), were designated as "type", respectively.

#### *Lectotype:*

MZB 22783, ♂, Muara, South Bawean, Java Sea, collected on 29 June 1954 by A. Hoogerwerf (No. 363).

*Measurements of the lectotype (length in mm & weight in gr):* wing 77.8, tail 33.1, culmen 12.2, tarsus 25.2, and weight 49.0.

*On the field label are written:* "bill-culmen and tip nearly black, edges and below yellow partly tinged with green; feet: greenish yellow, darker on the joints; test[es] large 8-10 mm, oblong and white; weight 49 gr."

#### *Paralectotypes* (3):

MZB 22784, ♀, Muara, Bawean Is., Java Sea, collected on 30 June 1954 by A. Hoogerwerf (No. 373);

MZB 22785, ♀, Muara, Bawean Is., Java Sea, collected on 1 July 1954 by A. Hoogerwerf (No. 380);

MZB 22787, juv. ♀, Muara, Bawean Is., Java Sea, collected on 2 July 1954 by A. Hoogerwerf (No. 389);

*Peters' Check-list*, 2, 1934, p. 147 (Southern Sumatra, Java, Belitung, Bali): *Turnix suscitator suscitator* (Gmelin).

*Howard & Moore Compl. Checklist*, 2003, p. 130: *Turnix suscitator suscitator* (J.F. Gmelin, 1789)

Remarks:

- a. The gender of *Turnix* is feminine, therefore, the correct name of this taxon should be then *Turnix suscitator baweana* Hoogerwerf, 1962;
- b. The colour variation of the upperparts of *suscitator* is, indeed, difficult to tell that *baweana* of Hoogerwerf is a valid subspecies. Therefore, we agree with Mees (1986: 27), who placed *Turnix suscitator baweanus* Hoogerwerf, 1962 as a junior synonym of *Turnix suscitator suscitator* (Gmelin, 1789);
- c. Two paralectotypes (listed as syntypes by Hoek Ostende *et al.* 1997: 59) are in RMNH:
  1. RMNH 27865 (formerly MZB 22786), ♂, Muara, Bawean Is., Java Sea, collected on 2 July 1954 by A. Hoogerwerf (No. 381); and
  2. RMNH 27866 (formerly MZB 22788), ♀, Muara, Bawean Is., Java Sea, collected on 2 July 1954 by A. Hoogerwerf (No. 390).

#### Family Columbidae

*Treron vernans karimuniensis* Hoogerwerf, 1962 (Pl. I, Fig. 2)

*Ardea*, 50 (3 4), 1962c: p. 196. No details are given of the number of specimens examined. A total of 14 specimens (8♂♂ & 6♀♀) were measured. Two of these specimens, MZB 23918 (♂) and MZB 23922 (♀) were, respectively, designated as "type" by Hoogerwerf. We consider there are 18 (8♂♂ & 10♀♀) specimens in type series; *i.e.* specimens MZB 23907 - 23924.

*Lectotype*:

MZB 23918, ♂, Karimunjawa Arch., Java Sea, collected on 31 October 1955 by A. Hoogerwerf (No. 165).

*Measurements of the lectotype (length in mm & weight in gr)*: wing 144.9, tail 95.2, culmen 17.5, tarsus 21.5, and weight 147.0.

*On the field label are written: "bill light slate, base-above dark grey; eyes light creamy; feet dark crimson; test[es] very small, oblong and light yellow; weight 147 gr."*

*Paralectotypes (15):*

MZB 23907, ♀, Karimunjawa Isls., Java Sea, collected on 23 October 1955 by A. Hoogerwerf (No. 6);  
 MZB 23908, ♀, Karimunjawa Isls., Java Sea, collected on 23 October 1955 by A. Hoogerwerf (No. 7);  
 MZB 23910, ♀, Karimunjawa Isls., Java Sea, collected on 25 October 1955 by A. Hoogerwerf (No. 44);  
 MZB 23911, ♀, Karimunjawa Isls., Java Sea, collected on 27 October 1955 by A. Hoogerwerf (No. 74);  
 MZB 23912, ♀, Karimunjawa Isls., Java Sea, collected on 28 October 1955 by A. Hoogerwerf (No. 102);  
 MZB 23913, ♀, Menjangan Besar Is., Karimunjawa Isls., Java Sea, collected on 28 October 1955 by A. Hoogerwerf (No. 115);  
 MZB 23914, ♀, Menjangan Besar Is., Karimunjawa Isls., Java Sea, collected on 29 October 1955 by A. Hoogerwerf (No. 124);  
 MZB 23915, ♂, Menjangan Besar Is., Karimunjawa Isls., Java Sea, collected on 29 October 1955 by A. Hoogerwerf (No. 147);  
 MZB 23916, ♂, Karimunjawa Isls., Java Sea, collected on 30 October 1955 by A. Hoogerwerf (No. 151);  
 MZB 23919, ♂, Karimunjawa Isls., Java Sea, collected on 1 November 1955 by A. Hoogerwerf (No. 178);  
 MZB 23920, ♀, Karimunjawa Isls., Java Sea, collected on 1 November 1955 by A. Hoogerwerf (No. 172);  
 MZB 23921, ♂, Karimunjawa Isls., Java Sea, collected on 1 November 1955 by A. Hoogerwerf (No. 179);  
 MZB 23922, ♀, Karimunjawa Isls., Java Sea, collected on 5 November 1955 by A. Hoogerwerf (No. 223);  
 MZB 23923, ♂, Karimunjawa Isls., Java Sea, collected on 6 November 1955 by A. Hoogerwerf (No. 238);  
 MZB 23924, ♂, Karimunjawa Isls., Java Sea, collected on 1 November 1955 by A. Hoogerwerf (No. 239).

*Peters' Check-list, 3, 1937, p. 18-19: Treron vernans griseicapilla Schlegel [Southern Tenasserim etc.]; Treron vernans purpurea (Gmelin) [Southern and southeastern Borneo, Java, Bali, Lombok and Sumbawa; Kangean Islands (?)]; (Kangean Isls., Java Sea)*

Howard & Moore *Compl. Checklist*, 2003, p. 172: *Treron vernans* (Linnaeus, 1771)

Remarks:

- a. Although it is difficult to separate *T. v. griceicapilla* Schlegel, *T. v. purpurea* (Gmelin), *T. v. kangeana* Mayr, from *T. v. karimuniensis* Hoogerwerf based on the colour variations and the measurements, we retain the population of Pink-necked Green-Pigeon from Karimunjawa Isls. is *Treron vernans karimuniensis* Hoogerwerf (cf. Hoek Ostende *et al.* 1997: 113).
- b. Two paralectotypes (listed as syntypes of by Hoek Ostende *et al.* 1997: 113) are in RMNH:
  1. RMNH 27869 (formerly MZB 23909), ♀, Karimunjawa Isls., Java Sea, collected on 25 October 1955 by A. Hoogerwerf (No. 43); and
  2. RMNH 27870 (formerly MZB 23917), ♂, Karimunjawa Isls., Java Sea, collected on 30 October 1955 by A. Hoogerwerf (No. 152).

#### Family Psittacidae

*Psittacula alexandri kangeanensis* Hoogerwerf, 1962 (Pl. I, Fig. 3)

*Ardea*, 50 (3 4), 1962c: 202. No details are given of the number of specimens examined. A total of ten specimens (7♂♂ & 3♀♀) from the Kangean Isls., Java Sea. were measured. Two of these specimens, MZB 23130 (♂) and MZB 23134 (♀), were designated as "type", respectively.

*Lectotype*:

MZB 23130, ♂, Buyutan nr Arjasa, Kangean Isls., Java Sea, collected on 22 August 1954 by A. Hoogerwerf (No. 96).

*Measurements of the lectotype (length in mm & weight in gr)*: wing 157.0, outer tail 157.0, inner tail 71.0, culmen 27.8, tarsus 15.4, and weight 140.0 (fresh plumage).

*On the field label are written*: "bill orange red mixed with yellow and grey; feet olive grey; eyes ?; feet dark crimson; test[es] well dev. 8-10 mm; weight 140 gr."

*Paralectotypes* (7):

MZB 23126, ♂, Buyutan nr Arjasa, Kangean Isls., Java Sea, 18 August 1954, collected by A. Hoogerwerf (No. 7);

MZB 23127, ♀, Buyutan nr Arjasa, Kangean Isls., Java Sea, collected on 19 August 1954 by A. Hoogerwerf (No. 38);

MZB 23129, ♀, Buyutan nr Arjasa, Kangean Isls., Java Sea, collected on 22 August 1954 by A. Hoogerwerf (No. 95);

MZB 23131, ♂, Buyutan nr Arjasa, Kangean Isls., Java Sea, collected on 22 August 1954 by A. Hoogerwerf (No. 101);

MZB 23133, ♂, Buyutan nr Arjasa, Kangean Isls., Java Sea, collected on 24 August 1954 by A. Hoogerwerf (No. 112);

MZB 23134, ♀, Buyutan nr Arjasa, Kangean Isls., Java Sea, collected on 24 August 1954 by A. Hoogerwerf (No. 113);

MZB 23135, ♂, Buyutan nr Arjasa, Kangean Isls., Java Sea, collected on 22 August 1954 by A. Hoogerwerf (No. 114).

*Peters' Check-list*, 3, 1937, p. 244 (Java, Bali, Kangean Isls., southern Borneo):

*Psittacula alexandri alexandri* (Linné).

*Howard & Moore Compl. Checklist*, 2003, p. 193: *Psittacula alexandri kangeanensis* Hoogerwerf, 1962

Remarks:

a. The wing and tail of *kangeanensis* is longer than those of *alexandri* (see also Forshaw, 1978: p. 351), therefore we agree with Hoogerwerf (1962c: p. 196) that the Moustached Parakeet of Kangean Isls. is *Psittacula alexandri kangeanensis* Hoogerwerf, 1962.

b. One paralectotype (listed as syntype by Hoek Ostende *et al.* 1997: 113) is in RMNH:

RMNH 27879 (formerly MZB 23132), , Buyutan nr Arjasa, Kangean Isls., Java Sea, collected on 24 August 1954 by A. Hoogerwerf (No. 111).

c. We could not trace where one of the paralectotype specimen is located, *i.e.*:

MZB 23128, ♂, Buyutan nr Arjasa, Kangean Isls., Java Sea, collected on 22 August 1954 by A. Hoogerwerf (No. 94);

#### Family Podargidae

*Batrachostomus javensis longicaudatus* Hoogerwerf, 1962 (Pl. I, Fig. 4)

*Ardea*, 50 (3 4), 1962c: p. 204. The description was based on four male specimens. One of these specimens, MZB 23136 was designated as "type".

*Holotype*:

MZB 23136, ♂, Pulau Sepanjang, Kangean Arch., collected on 10 September 1954 by A. Hoogerwerf (No. 365).

*Measurements of the holotype (length in mm & weight in gr):* wing 131.0, tail 137.0, culmen 23.6, tarsus 20.2, and weight 61.0

*On the field label are written:* "bill dirty horn grey, feet grey fleshly, eyes very light yellow, and test[es] rather well dev. ca 4 mm".

*Paratypes (2):*

MZB 23138, ♂, Sepanjang Is., Kangean Isls., Java Sea, collected on 12 September 1954 by A. Hoogerwerf (No. 403);

MZB 23139, ♂, Sepanjang Is., Kangean Isls., Java Sea, collected on 12 September 1954 by A. Hoogerwerf (No. 404).

*Peters' Check-list*, 4, 1940, p. 179 (Western and Central Java below 1600 meters): *Batrachostomus javensis javensis* (Horsfield); (Sumatra, Bangka, Belitung, Borneo): *Batrachostomus javensis cornutus* (Temminck)

*Howard & Moore Compl. Checklist*, 2003, p. 238: *Batrachostomus cornutus longicaudatus* Hoogerwerf, 1962

Remarks:

- a. Based on the colour variation of the the plumage, the measurements of the culmen and that of the width of the bill described by Hoogerwerf (1962c: 204-205) and compared those with *Batrachostomus j. javensis* and *Batrachostomus j. cornutus*, we conclude that the Kangean Isls. Frogmouth is a valid subspecies *Batrachostomus javensis longicaudatus* Hoogerwerf, 1962
- b. One paratype is in the collection of RMNH (Hoek Ostende *et al.* 1997 161):  
RMNH 27880 (*formerly* MZB 23137), , Sepanjang Is., Kangean Isls., Java Sea, collected on 12 September 1954 by A. Hoogerwerf (No. 402).

### Family Picidae

*Chrysocolaptes lucidus kangeanensis* Hoogerwerf, 1963 (Pl. II, Fig. 1)

*Bull. British Orn. Cl.*, 83 (6), 1963c: p. 113. The description was based on three specimens (1♂ & 2♀♀) from Kangean Isls., Java Sea. Two of these specimens, MZB 2500 (♂) and MZB 23181 (♀), were designated as "type", respectively.

*Lectotype:*

MZB 2500, ♂, Arjasa, Kangean Isls., Java Sea, collected in May 1892 by A.G. Vorderman.

*Measurements of the lectotype (length in mm):* wing 137.2, tail 75.9, culmen 4.4, and tarsus 25.8.



*Paralectotypes* (2):

MZB 23180, ♀, Jukang-jukang, NE Kangean, collected on 24 September 1954 by A. Hoogerwerf (No. 525);

MZB 23181, ♀, Paliat Is., Kangean Isls., Java Sea, collected on 17 September 1954 by A. Hoogerwerf (No. 446).

*On the field label are written:* “bill-culmen dark grey, base nostrils and whole lower bill very light green; feet dirty olive grey, soles dirty chaumois; ov[aria] small but well granular; weight 118 gr.”.

*Peters' Check-list*, 6, 1948, p. 227 (Java chiefly eastern, Bali, Kangean Isls.):

*Chrysocolaptes lucidus strictus* (Horsfield)

*Howard & Moore Compl. Checklist*, 2003, p. 329: *Chrysocolaptes lucidus kangeanensis* Hoogerwerf, 1963

## Remarks:

- a. Moustachial, malar, and mesial throat stripes of *strictus* are well-marked than those of *kangeanensis*; the colour of the crown feathers of *strictus* is Flame Scarlet (Color 15, Smithe, 1975), while that of *kangeanensis* is Spectrum Red (Color 11, Smithe, 1975). Therefore we agree that the Greater Flameback Woodpecker of Kangean Isls. is *Chrysocolaptes lucidus kangeanensis* Hoogerwerf, 1963.
- b. No notes are written, both on the field label as well as on the specimen card of the lectotype (MZB 2500).

## Family Motacillidae

*Anthus novaeseelandiae idjenensis* Hoogerwerf, 1962 (Pl. II, Fig. 2)

*Treubia*, 26 (1), 1962d: p. 13. The description was based on five specimens (3♂♂ & 2♀♀) from East Java. Two of these specimens, MZB 2602 (♂) and MZB 12390 (♀), were designated as “types”.

*Lectotype:*

MZB 2602, ♂, Blawan, Ijen Highland, alt. 950 m, East Java, collected on 9 June 1924 by K.W. Dammerman (No. 57).

*Measurements of the lectotype (length in mm):* wing 85.3, tail 62.8, culmen 19.0, and tarsus 29.8.

*On the MZB 2602 specimen card are written (in Dutch):* “iris bruin [iris brown], bovensnavel grauwwart [upper bill greyblack], ondersnavel lichter punt donker [lower bill lighter, the point of the bill dark], pooten lichtbruin [feet light brown]”.

*Paralectotypes* (2):

MZB 12390, ♀, Ranu Kumbolo, alt. 2,383 m, Tengger Mts., East Java, collected on 10 July 1939 by A.C. van Bemmelen;

MZB 12391, ♀, Ranu Pani, alt. 2,100 m, Tengger Mts., East Java, collected on 13 July 1939 by Soeparma.

*Peters' Check-list*, 9, 1960, p. 147-148 (From southern Tennesseim [Mergui Dist.], southward through Malaya, Sumatra, Java, Riau Archipelago, and in southern Laos, Cambodia and Cochin China; Borneo): *Anthus novaesealandiae malayensis* Eyton

*Howard & Moore Compl. Checklist*, 2003, p. 741, provisionally listed as: *Anthus richardi idjenensis* Hoogerwerf, 1962

## Remarks:

- a. We could, neither examine the nominal race of *Anthus novaesealandiae* and its Australian and New Zealand races, nor the nominal race of *Anthus richardi*. The five East Java specimens used by Hoogerwerf to designate *idjenensis* were collected in June and July are indeed larger than *A. n. malayanus* from Java (West and Central) collected in September 1934 and February 1935. Therefore, we retain *idjenensis* of Hoogerwerf as a valid subspecies of *Anthus novaesealandiae*, although Mees (1996: 37-38) pointed out " ... that I do not like the subspecies *idjenensis*, but its definitive evaluation must await the bringing together of adequate material".
- b. One paralectotype (listed as syntype by Dekker 2003: 21) is in RMNH: RMNH 27920 (formerly MZB 2601), ad. ♂, Blawan, Ijen, E. Java, collected on 9 June 1924 by K.W. Dammerman (No. 56).
- c. We could not trace where one of the paralectotype MZB 12389 is located. MZB 12389, ♂, Ranu Pani, alt. 2,200m, Tengger Mts., East Java, collected on 2 July 1939 by Soeparma was mounted and put in the exhibition room.

## Family Pycnonotidae

*Pycnonotus goiavier karimuniensis* Hoogerwerf, 1963 (Pl. II, Fig. 3)

*Bull. British Orn. Cl.*, 83 (3), 1963b: p. 58. No details are given of the number of specimens examined. A total of 28 specimens (19♂♂ & 9♀♀) from Karimunjawa Isls. were measured. Two of these specimens, MZB 24174 (♂) and MZB 24179 (♀), were designated as "types" by Hoogerwerf. We consider there are 31 (19, 1?, 10, 1 unsexed)

specimens in the type series, *i.e.* specimens: MZB 3971, 3973, 3977, 3991, 3999; MZB 8681 - 8685; & MZB 24161 - 24181.

*Lectotype:*

MZB 24174, ♂, Menjangan Kecil Is., Karimunjawa Isls., collected on 3 November 1955 by A. Hoogerwerf (No. 205).

*Measurements of the lectotype (length in mm & weight in gr):* wing 90.0, tail 85.1, culmen 18.8, tarsus 21.9, and weight 36.0.

*On the field label are written:* "bill black; eyes dark brown; feet black; test[es] very small, oblong and yellowish".

*Paralectotypes (28):*

MZB 3971, ♀, Karimunjawa Isls., collected on 7 May 1926 by K. W. Dammerman (No. 1);

MZB 3973, ♂, Karimunjawa Isls., collected on 7 May 1926 by K. W. Dammerman (No. 3);

MZB 3977, ♂, Karimunjawa Isls., collected on 8 May 1926 by K. W. Dammerman (No. 7);

MZB 3991, ♂, Karimunjawa Isls., collected on 10 May 1926 by K. W. Dammerman (No. 21);

MZB 3999, ♀, Karimunjawa Isls., collected on 12 May 1926 by K. W. Dammerman (No. 29);

MZB 8681, ♂, Karimunjawa Isls., collected on 23 November 1930 by Darna (No. 13);

MZB 8682, ♀, Karimunjawa Isls., collected on 23 November 1930 by Darna (No. 12);

MZB 8683, ♂, Karimunjawa Isls., collected on 24 November 1930 by Darna (No. 25);

MZB 8684, ♀, Karimunjawa Isls., collected on 26 November 1930 by Darna (No. 38);

MZB 8685, ♂, Karimunjawa Isls., collected on 26 November 1930 by Darna (No. 39);

MZB 24161, ♀, Karimunjawa Isls., collected on 23 October 1955 by A. Hoogerwerf (No. 9);

MZB 24162, ♂, Karimunjawa Isls., collected on 23 October 1955 by A. Hoogerwerf (No. 10);

MZB 24164, ♂, Karimunjawa Isls., collected on 24 October 1955 by A. Hoogerwerf (No. 23);

MZB 24165, ♂, Karimunjawa Isls., collected on 24 October 1955 by A. Hoogerwerf (No. 29);

MZB 24166, sex?, Karimunjawa Isls., collected on 24 October 1955 by A. Hoogerwerf (No. 30);  
 MZB 24167, ♂, Karimunjawa Isls., collected on 26 October 1955 by A. Hoogerwerf (No. 68);  
 MZB 24168, ♀, Menjangan Kecil Is., Karimunjawa Isls., collected on 27 October 1955 by A. Hoogerwerf (No. 85);  
 MZB 24169, ♂, Menjangan Kecil Is., Karimunjawa Isls., collected on 27 October 1955 by A. Hoogerwerf (No. 86);  
 MZB 24170, ♂, Menjangan Besar Is., Karimunjawa Isls., collected on 28 October 1955 by A. Hoogerwerf (No. 114);  
 MZB 24171, ♀, Karimunjawa Isls., collected on 30 October 1955 by A. Hoogerwerf (No. 153);  
 MZB 24172, ♀, Karimunjawa Isls., collected on 2 November 1955 by A. Hoogerwerf (No. 185);  
 MZB 24173, ♂, Karimunjawa Isls., collected on 2 November 1955 by A. Hoogerwerf (No. 186);  
 MZB 24175, ♂, Kamujan Is., Karimunjawa Isls., collected on 14 November 1955 by A. Hoogerwerf (No. 295);  
 MZB 24176, ♂? , Kamujan Is., Karimunjawa Isls., collected on 14 November 1955 by A. Hoogerwerf (No. 296);  
 MZB 24177, ♂, Kamujan Is., Karimunjawa Isls., collected on 14 November 1955 by A. Hoogerwerf (No. 306);  
 MZB 24178, ♀, Kamujan Is., Karimunjawa Isls., collected on 15 November 1955 by A. Hoogerwerf (No. 311);  
 MZB 24179, ♀, Kamujan Is., Karimunjawa Isls., collected on 15 November 1955 by A. Hoogerwerf (No. 312);

*Peters' Check-list*, 9, 1960, p. 246 (Java and the Karimunjawa Is., Bali, Lombok)  
 : *Pycnonotus goiavier analis* (Horsfield)

*Howard & Moore Compl. Checklist*, 2003, p. 568: *Pycnonotus goiavier gourdini*  
 G.R. Gray, 1847

Remarks:

- a. We have measured the tail lengths of 10 ♂♂ specimens each of *analis*, *karimuniensis* and *gourdini*. The tails of *analis* and *karimuniensis* are on the average longer 84.99 (78.37-89.51) and 86.36 (83.59- 86.66), respectively, than those of *gourdini* 79.01 (66.35- 82.51) mm. We, therefore, designate the Karimunjawa Isls. Yellow-vented Bulbul *Pycnonotus goiavier karimuniensis* Hoogerwerf, 1963 is a junior synonym of *Pycnonotus goiavier analis* (Horsfield, 1821).

- b. Two paralectotypes (listed as syntypes by Dekker 2003: 31) are in RMNH:
  1. RMNH 27889 (*formerly* MZB 24163), ad. ♂, Karimunjawa Isls., collected on 23 October 1955 by A. Hoogerwerf (No. 11); and
  2. RMNH 27890 (*formerly* MZB 24181), ad. ♂, P. Parang, Karimunjawa Isls., collected on 19 November 1956 by A. Hoogerwerf (No. 363).
- c. We could not trace where one of the paralectotypes is located, *i.e.*: MZB 24180, ♂, Kamujan Is., Karimunjawa Isls., collected on 15 November 1955 by A. Hoogerwerf (No. 315);

***Pycnonotus plumosus siberi*** Hoogerwerf, 1965 (Pl. II, Fig. 4)

*Bull. British Orn. Cl.*, 85 (3), 1965: p. 50. No details are given of the number of specimens examined. A total of 20 (12♂♂ & 8♀♀) specimens collected from Bawean Is. were measured. Two of these specimens, MZB 22868 (♂) and MZB 22879 (♀) were designated as "types" by Hoogerwerf. We consider there are 25 (12♂♂, 11♀♀, & 2 sex not indicated) specimens in the type series, *i.e.* specimens MZB 5541, 5548, 5596, & MZB 22861 - 22882.

**Lectotype:**

MZB 22868, ♂, Bulu Mt., C Bawean, alt. 100-200 m, collected on 5 June 1954 by A. Hoogerwerf (No. 104).

*Measurements of the lectotype (length in mm & weight in gr):* wing 84.7, tail 82.8, culmen broken, tarsus 17.7, and weight 35.0.

*On the field label are written:* "bill black; feet fleshy brown; eyes red brown; test[es] large 10 mm; weight 35 gr."

**Paralectotypes (22):**

MZB 5541, ♂, S Bawean, collected on 5 May 1928 by Franck (No. 1);

MZB 5548, ♀, S Bawean, collected on 6 May 1928 by Madzoed (No. 8);

MZB 5596, sex?, S Bawean, collected on 13 May 1928 by Franck (No. 56);

MZB 22861, ♀, Sangkapura, sea-level, Bawean, collected on 25 May 1954 by A Hoogerwerf (No. 11);

MZB 22862, ♂, Sangkapura, sea-level, Bawean, collected on 25 May 1954 by A Hoogerwerf (No. 12);

MZB 22864, ♀, Martalaya Mt., alt. 0-75 m, Bawean, collected on 31 May 1954 by A Hoogerwerf (No. 80);

MZB 22865, sex?, Martalaya Mt., alt. 0-75 m, Bawean, collected on 31 May 1954 by A Hoogerwerf (No. 81);

MZB 22867, ♀, Martalaya Mt., alt. 0-75 m, Bawean, collected on 31 May 1954 by A Hoogerwerf (No. 83);

- MZB 22869, ♀, near Bulu Mt., alt. 100-200 m, Bawean, collected on 5 June 1954 by A Hoogerwerf (No. 105);  
 MZB 22870, juv. ♂, near Sangkapura, sea-level, Bawean, collected on 11 June 1954 by A Hoogerwerf (No. 189);  
 MZB 22871, juv. ♀, near Sangkapura, sea-level, Bawean, collected on 11 June 1954 by A Hoogerwerf (No. 190);  
 MZB 22872, ♀, near Sangkapura, sea-level, Bawean, collected on 11 June 1954 by A Hoogerwerf (No. 191);  
 MZB 22873, ♀, Sekarputih, alt. 0-100 m, E Bawean, collected on 16 June 1954 by A Hoogerwerf (No. 235);  
 MZB 22874, ♂, Sekarputih, alt. 0-100 m, E Bawean, collected on 16 June 1954 by A Hoogerwerf (No. 235);  
 MZB 22875, ♂, Sekarputih, alt. 0-100 m, E Bawean, collected on 16 June 1954 by A Hoogerwerf (No. 237);  
 MZB 22876, ♂, Batulintang, alt. 200-500 m, C Bawean, collected on 23 June 1954 by A Hoogerwerf (No. 295);  
 MZB 22877, ♀, Batulintang, alt. 200-500 m, C Bawean, collected on 23 June 1954 by A Hoogerwerf (No. 296);  
 MZB 22878, ♂, Cott. Muara, sea-level, S Bawean, collected on 26 June 1954 by A Hoogerwerf (No. 313);  
 MZB 22879, ♀, Cott. Muara, S Bawean, sea-level, collected on 26 June 1954 by A Hoogerwerf (No. 314);  
 MZB 22880, ♂, Cott. Muara, sea-level, S Bawean, collected on 26 June 1954 by A Hoogerwerf (No. 315);  
 MZB 22881, ♂, Cott. Muara, sea-level, S Bawean, collected on 26 June 1954 by A Hoogerwerf (No. 316);  
 MZB 22882, ♂, Cott. Muara, sea-level, S Bawean, collected on 26 June 1954 by A Hoogerwerf (No. 317).

*Peters' Check-list*, 9, 1960, p. 248 (The Malay Peninsula from southern Tenasserim [Mergui Dist.], the Isthmus of Kra to the extreme south: Riau Arch.; Bangka; eastern Sumatra; Java; **Bawean Is.**): *Pycnonotus plumosus plumosus* Blyth  
*Howard & Moore Compl. Checklist*, 2003, p. 568: *Pycnonotus plumosus plumosus* Blyth, 1845

Remarks:

- a. The colour variations of the plumage and the measurements of the wing, tail, and culmen of *sibergi* are, indeed, difficult to tell from where the bird was collected. Therefore, we agree that *Pycnonotus plumosus*

*siberigi* Hoogerwerf, 1965 is a junior synonym of *Pycnonotus plumosus plumosus* Blyth, 1845;

- b. Two paralectotypes (listed as syntypes by Dekker 2003: 32) are in RMNH:
1. RMNH 27893 (formerly MZB 22863), ad. ♀, Gn. Tinggi, Bawean Is., alt. 200 m, Bawean, collected on 26 May 1954 by A. Hoogerwerf (No. 20), and
  2. RMNH 27894 (formerly MZB 22866), ad. ♂, Gn. Martalaja, Bawean Is., collected on 31 May 1954 by A. Hoogerwerf (No. 82).

#### Family Chloropseidae

*Aegithina tiphia djungkulanensis* Hoogerwerf, 1962 (Pl. III, Fig. 1)

*Bull. British Orn. Cl.*, 82 (9), 1962b: 162. Hoogerwerf mentioned six females in the description; he measured 15 specimens (10♂♂ & 5♀♀) collected from Ujung Kulon, W Java. Two of these specimens, MZB 32523 (♂) and MZB 23530 (♀), were designated as “types” by Hoogerwerf. We consider there are 23 (13♂♂, 2♂♂?, 4♀♀, 2♀♀?, & 2 sex not indicated) specimens in the type series, *i.e.* specimens MZB 15648, and MZB 23521 - 23542.

*Lectotype:*

MZB 23523, ♂, Tanjung Alang alang, Ujung Kulon, W Java, collected on 8 July 1955 by A. Hoogerwerf (No. 345).

*Measurements of the lectotype (length in mm & weight in gr):* wing 60.2, tail 43.6, culmen broken, tarsus 19.0, and weight 16.0.

*On the field label are written:* “bill dark, nearly black, edges slate blue, below light slate blue; eye light blue; feet slate blue; test[es] small black, weight 16 gr.”.

*Paralectotypes (19):*

MZB 23521, ♂, Tanjung Alang-alang, Ujung Kulon, West Java., collected on 8 July 1955 by A. Hoogerwerf (No. 330);

MZB 23522, ♀, Tanjung Alang-alang, Ujung Kulon, West Java., collected on 8 July 1955 by A. Hoogerwerf (No. 331);

MZB 23524, ♂?, Tanjung Alang-alang, Ujung Kulon, West Java., collected on 8 July 1955 by A. Hoogerwerf (No. 346);

MZB 23525, ♀, Tanjung Alang-alang, Ujung Kulon, West Java., collected on 8 July 1955 by A. Hoogerwerf (No. 348);

MZB 23526, sex?. (juv.), Tanjung Alang-alang, Ujung Kulon, West Java., collected on 8 July 1955 by A. Hoogerwerf (No. 349);  
 MZB 23528, ♂, Tanjung Alang-alang, Ujung Kulon, West Java., collected on 9 July 1955 by A. Hoogerwerf (No. 354);  
 MZB 23529, ♂, Tanjung Alang-alang, Ujung Kulon, West Java., collected on 9 July 1955 by A. Hoogerwerf (No. 356);  
 MZB 23530, ♀, Tanjung Alang-alang, Ujung Kulon, West Java., collected on 9 July 1955 by A. Hoogerwerf (No. 360);  
 MZB 23531, ♂, Tanjung Alang-alang, Ujung Kulon, West Java., collected on 9 July 1955 by A. Hoogerwerf (No. 361);  
 MZB 23532, ♂?, Tanjung Alang-alang, Ujung Kulon, West Java., collected on 9 July 1955 by A. Hoogerwerf (No. 362);  
 MZB 23533, ♂, Niur, Ujung Kulon, West Java., collected on 9 July 1955 by A. Hoogerwerf (No. 364);  
 MZB 23534, ♂, Niur, Ujung Kulon, West Java., collected on 9 July 1955 by A. Hoogerwerf (No. 365);  
 MZB 23536, ♀?, Tanjung Alang-alang, Ujung Kulon, West Java., collected on 10 July 1955 by A. Hoogerwerf (No. 375);  
 MZB 23537, ♂, Tanjung Alang-alang, Ujung Kulon, West Java., collected on 11 July 1955 by A. Hoogerwerf (No. 391);  
 MZB 23538, ♂, Tanjung Alang-alang, Ujung Kulon, West Java., collected on 11 July 1955 by A. Hoogerwerf (No. 392);  
 MZB 23539, ♂, Tanjung Alang-alang, Ujung Kulon, West Java., collected on 12 July 1955 by A. Hoogerwerf (No. 401);  
 MZB 23540, ♂, Tanjung Alang-alang, Ujung Kulon, West Java., collected on 12 July 1955 by A. Hoogerwerf (No. 414);  
 MZB 23541, ♀?, Tanjung Alang-alang, Ujung Kulon, West Java., collected on 12 July 1955 by A. Hoogerwerf (No. 415);  
 MZB 23542, sex?., Tanjung Alang-alang, Ujung Kulon, West Java., collected on 8 July 1955 by A. Hoogerwerf (No. 347).

*Peters' Check-list*, 9, 1960, p. 301 (Java and Bali): *Aegithina tiphia scapularis* (Horsfield)

*Howard & Moore Compl. Checklist*, 2003, p. 465: *Aegithina tiphia horizoptera* Oberholser, 1912 Remarks:

- a. There are no *horizoptera* specimens from Nias Is. (type locality) in the collection of MZB. The yellow throat and breast feathers of *horizoptera* B&specimens from Aceh (N. Sumatra) are more pronounced than those of *scapularis* and *djungkulanensis*. Therefore, we retain the Common



lora of Ujung Kulon, West Java as *Aegithina tiphia djungkulanensis* Hoogerwerf, 1962 (cf. Mees 1996: 49).

- b. Three paralectotypes (listed as syntypes by Dekker 2003: 33-34) are in RMNH:
1. RMNH 88960 (formerly MZB 15648), ad. ♂, Citelang, Ujung Kulon, W Java, collected on 10 September 1942 by Saän;
  2. RMNH 27885 (formerly MZB 23520), ad. ♀, Tanjung Alang-alang, Ujung Kulon, W Java, collected on 8 July 1955 by A. Hoogerwerf (No. 329);
  3. RMNH 27886 (formerly MZB 23527), ad. ♂, Tanjung Alang-alang, Ujung Kulon, W Java, collected on 9 July 1955 by A. Hoogerwerf (No. 353).

### Family Turdidae

#### *Copsychus malabaricus mirabilis* Hoogerwerf, 1962 (Pl. III, Fig. 2)

*Ardea*, 50 (3 4), 1962c: p. 184. No details are given of the number of specimens examined. A total of 12 specimens (5♂♂ & 7♀♀) from Prinsen (= Panaitan) Is., Sunda Strait were measured. Two of these specimens, MZB 21180 (♂) and MZB 21178 (♀), were designated as "type" by Hoogerwerf. We consider there are 13 (6♂♂, 1♂?, 5♀♀, 2♀♀?, & 1 sex not indicated) specimens in the type series, *i.e.* specimens MZB 21178 - 21190.

#### *Lectotype:*

MZB 21180, ♂, Ciharashas, Prinsen (= Panaitan) Is., West Java, collected on 2 September 1951 by A. Hoogerwerf (No. 11).

*Measurements of the lectotype (length in mm & weight in gr):* wing 92.3, tail 43.6, culmen broken, tarsus 26.7, and weight 36.0.

*Collector's label contains the following information (in Dutch):* "Indon. Naam [Indon. name]: Kutjitja hutan; oog donker [eye dark]; snavel zwart [bill black]; poten vleeskleurig bruin [feet fleshy brown]; gew[icht] [weight] 36 mm [sic]".

#### *Paralectotypes* (10):

MZB 21178, ♀, Ciharashas, Prinsen (=Panaitan) Is., collected on 2 September 1951 by Madi (No. 4);

MZB 21179, ♂, Ciharashas, Panaitan Is., collected on 2 September 1951 by A. Hoogerwerf (No. 5);

MZB 21181, ♀, Ciharashas, Panaitan Is., collected on 2 September 1951 by A. Hoogerwerf (No. 12);

MZB 21182, ♂, Ciharashas, Panaitan Is., collected on 3 September 1951 by A. Hoogerwerf (No. 30);

MZB 21185, ♀, Ciharashas, Panaitan Is., collected on 3 September 1951 by A. Hoogerwerf (No. 33);

MZB 21186, ♀?, Ciharashas, Panaitan Is., collected on 5 September 1951 by A. Hoogerwerf (No. 54);

MZB 21187, sex?, Ciharashas, Panaitan Is., collected on 2 September 1951 by A. Hoogerwerf (No. 55);

MZB 21188, ♀?, Ciharashas, Panaitan Is., collected on 5 September 1951 by A. Hoogerwerf (No. 56);

MZB 21189, ♂?, Ciharashas, Panaitan Is., collected on 5 September 1951 by A. Hoogerwerf (No. 57);

MZB 21190, ♀, Ciharashas, Panaitan Is., collected on 8 September 1951 by A. Hoogerwerf (No. 86).

*Peters' Check-list*, 10, 1964, p. 70 (Prinsen Is., southern Sunda Strait): *Copsychus malabaricus mirabilis* Hoogerwerf, 1962.

*Howard & Moore Compl. Checklist*, 2003, p. 680: *Copsychus malabaricus mirabilis* Hoogerwerf, 1962.

Remarks:

- a. Two paralectotypes (listed as syntypes by Dekker 2003: 40) are in RMNH:
  1. RMNH 27896 (*formerly* MZB 21183), ad. ♂, Ciharashas, Prinsen (= Panaitan) Is., W Java, collected on 3 September 1951 by A. Hoogerwerf (No. 31); and
  2. RMNH 27897 (*formerly* MZB 21184), ad. ♀, Ciharashas, Prinsen (= Panaitan) Is., W Java, collected on 3 September 1951 by A. Hoogerwerf (No. 32).
- b. One paralectotype (MZB 21178) was collected by Madi (*not* Mardi, *see* Remarks on *Niltava banyumas mardii* Hoogerwerf, 1962).

#### Family Sylviidae

*Orthotomus sepium baweanus* Hoogerwerf, 1962 (Pl. III, Fig. 3)

*Bull. British Orn. Cl.*, 82 (8), 1962a: p. 150. No details are given of the number of specimens examined. A total of 21 specimens (13♂♂ & 8♀♀) collected from Bawean Is. were measured. Two of these specimens, MZB 22918 (♂) and MZB 22900 (♀), were designated as

“types” by Hoogerwerf. We consider there are 24 (12♂♂, 1♂?, 7♀♀, 2♀♀?, & 1 sex not indicated) specimens in the type series, *i.e.* specimens MZB 22898 - 22921.

*Lectotype:*

MZB 22918, ♂, Tanjung Alang-alang, Bawean Is., Sea level, Java Sea, collected on 27 June 1954 by A. Hoogerwerf (No. 329).

*Measurements of the lectotype (length in mm & weight in gr):* wing 46.8, tail 43.9, culmen 14.6, tarsus 20.7, and weight 10.0.

*On the field label are written:* “bill nearly black, below fleshy; feet brown fleshy; eyes light ochreous brown; test[es] large 3-4 mm; weight 10 gr.”.

*Paralectotypes (21):*

MZB 22898, ♂, Sangkapura, sea-level, Bawean Is., collected on 25 May 1954 by A. Hoogerwerf (No. 16);

MZB 22899, ♂, near Cott. Muara, alt. 25 m, Bawean Is., collected on 10 June 1954 by A. Hoogerwerf (No. 171);

MZB 22900, ♀, near Cott. Muara, alt. 25 m, Bawean Is., collected on 10 June 1954 by A. Hoogerwerf (No. 172);

MZB 22901, ♀, near Cott. Tanjung, sea-level, Bawean Is., collected on 10 June 1954 by A. Hoogerwerf (No. 185);

MZB 22903, ♂?, near Sangkapura, sea-level, Bawean Is., collected on 11 June 1954 by A. Hoogerwerf (No. 193);

MZB 22904, ♂, near Sangkapura, sea-level, Bawean Is., collected on 11 June 1954 by A. Hoogerwerf (No. 194);

MZB 22905, ♂, near Sangkapura, sea-level, Bawean Is., collected on 11 June 1954 by A. Hoogerwerf (No. 196);

MZB 22907, sex?, near Sangkapura, sea-level, Bawean Is., collected on 11 June 1954 by A. Hoogerwerf (No. 198);

MZB 22908, ♂, Sekarputih, East Bawean, sea-level, collected on 16 June 1954 by A. Hoogerwerf (No. 232);

MZB 22909, sex?, Sekarputih, alt. 0 - 100 m, East Bawean, collected on 16 June 1954 by A. Hoogerwerf (No. 233);

MZB 22910, ♀, Sekarputih, alt. 0 - 100 m, East Bawean, collected on 16 June 1954 by A. Hoogerwerf (No. 240);

MZB 22911, ♀, Sekarputih, alt. 0 - 100 m, East Bawean, collected on 16 June 1954 by A. Hoogerwerf (No. 241);

MZB 22912, ♀?, Sekarputih, alt. 0 - 100 m, East Bawean, collected on 16 June 1954 by A. Hoogerwerf (No. 242);

MZB 22914, ♂, Sekarputih, alt. 0 - 100 m, East Bawean, collected on 17 June 1954 by A. Hoogerwerf (No. 260);

MZB 22915, ♂, Sekarputih, alt. 0 -100 m, East Bawean, collected on 17 June 1954 by A. Hoogerwerf (No. 261);

MZB 22916, ♂, Batulintang, alt. 200 - 500 m, Central Bawean, collected on 23 June 1954 by A. Hoogerwerf (No. 293);

MZB 22919, ♀, near Tanjung Alang-alang, sea-level, South Bawean, collected on 27 June 1954 by A. Hoogerwerf (No. 330);

MZB 22920, ♂, near Tanjung Alang-alang, sea-level, South Bawean, collected on 27 June 1954 by A. Hoogerwerf (No. 331);

MZB 22921, ♂, mangrove near Cott. Muara, sea-level, South Bawean, collected on 28 June 1954 by A. Hoogerwerf (No. 351).

*Peters' Check-list*, 11, 1986, p. 184 (Bawean Is., north of Java): *Orthotomus ruficeps baweanus* Hoogerwerf, 1962.

*Howard & Moore Compl. Checklist*, 2003, p. 564: *Orthotomus ruficeps baweanus* Hoogerwerf, 1962.

Remarks:

- a. Based on the colour variation of the plumage and the measurements, we consider *ruficeps* is conspecific with *sepium*, therefore we retain the Tailorbird of Bawean Is. as *Orthotomus sepium baweanus* Hoogerwerf, 1962 (cf. Mees 1996: 80-81)
- b. Two paralectotypes (listed as syntypes by Dekker 2003: 60) are in RMNH:
  1. RMNH 27904 (formerly MZB 22902), ad. ♀, nr Sangkapura, Bawean Is., collected on 11 June 1954 by A. Hoogerwerf (No. 192); and
  2. RMNH 27905 (formerly MZB 22913), ad. ♂, Sekarputih, E Bawean, collected on 17 June 1954 by A. Hoogerwerf (No. 259);
- c. We could not trace where two of the paralectotype specimens are located, i.e.:
  1. MZB 22906, juv. ♀, near Sangkapura, sea-level, Bawean Is., collected on 11 June 1954 by A. Hoogerwerf (No. 197);
  2. MZB 22917, ♀?, Batulintang, alt. 200 - 500 m, Central Bawean, collected on 23 June 1954 by A. Hoogerwerf (No. 294).

*Orthotomus sepium sundaicus* Hoogerwerf, 1962 (Pl. III, Fig. 4)

*Bull. British Orn. Cl.*, 82 (8), 1962a: p. 145. No details are given of the number of specimens examined. A total of 19 specimens (12♂♂ & 7♀♀) collected from Prinsen Is. (= Panaitan Is.) were measured. Two of these specimens, MZB 20952 (♂) and MZB 20944 (♀), were

designated as “types” by Hoogerwerf. We consider there are 29 (15♂♂, 8♀♀, 5 sex not indicated, & 1 juv.) specimens in the type series, *i.e.* specimens MZB 20929 - 20957.

*Lectotype:*

MZB 20952, ♂, Legon Lintah, Prinsen (= Panaitan) Is., collected on 24 September 1951 by A. Hoogerwerf (No. 213).

*Measurements of the lectotype (length in mm & weight in gr):* wing 49.8, tail 44.7, culmen broken, tarsus 22.0, and weight 9.6.

*Collector's label contains the following information (in Dutch):* “Indon. naam [Indon. name]; Prindjak; oog licht oker bruin [eye light ochreous brown]; boven snavel zwart [upper bill black]; onder snavel vleeskleurig [lower bill fleshy colour]; poten bruin vleeskleurig [feet fleshy brown]; gew[icht] [weight] 9.6 gr.”.

*Paralectotypes (26):*

MZB 20929, ♀, Ciharashas, Panaitan Is., alt. 0 - 50 m, collected on 3 September 1951 by A. Hoogerwerf (No. 38);

MZB 20930, ♂, Ciharashas, Panaitan Is., alt. 0 - 50 m, collected on 3 September 1951 by A. Hoogerwerf (No. 37);

MZB 20931, ♂, Ciharashas, Panaitan Is., alt. 0 - 50 m, collected on 3 September 1951 by A. Hoogerwerf (No. 39);

MZB 20932, sex?, Ciharashas, Panaitan Is., alt. 0 - 20 m, collected on 2 September 1951 by A. Hoogerwerf (No. 14);

MZB 20933, sex?, Ciharashas, Panaitan Is., alt. 0 - 20 m, collected on 5 September 1951 by A. Hoogerwerf (No. 66);

MZB 20934, ♂, Ciharashas, Panaitan Is., alt. 0 - 20 m, collected on 5 September 1951 by A. Hoogerwerf (No. 68);

MZB 20936, ♂, Ciharashas, Panaitan Is., alt. 0 - 20 m, collected on 5 September 1951 by A. Hoogerwerf (No. 67);

MZB 20937, sex?, Ciharashas, Panaitan Is., alt. 0 - 20 m, collected on 6 September 1951 by A. Hoogerwerf (No. 81);

MZB 20940, ♂, Bivak II, Panaitan Is., alt. 0 - 100 m, collected on 10 September 1951 by A. Hoogerwerf (No. 103);

MZB 20941, ♂, Bivak II, Panaitan Is., alt. 0 - 100 m, collected on 10 September 1951 by A. Hoogerwerf (No. 104);

MZB 20942, ♀, Bivak II, Panaitan Is., alt. 0 - 50 m, collected on 12 September 1951 by A. Hoogerwerf (No. 105);

MZB 20943, sex?, Bivak II, Panaitan Is., collected on 12 September 1951 by A. Hoogerwerf (No. 106);

- MZB 20944, ♀, Bivak II, Panaitan Is., alt. 0 - 50 m, collected on 12 September 1951 by A. Hoogerwerf (No. 107);  
 MZB 20945, ♂, Bivak II, Panaitan Is., collected on 12 September 1951 by A. Hoogerwerf (No. 108);  
 MZB 20946, juv., Bivak II, Panaitan Is., alt. 0 - 50 m, collected on 9 September 1951 by A. Hoogerwerf (not numbered);  
 MZB 20947, ♀, Bivak II, Panaitan Is., alt. 0 - 50 m, collected on 12 September 1951 by A. Hoogerwerf (No. 114);  
 MZB 20948, ♂, Bivak II, Panaitan Is., alt. 0 - 20 m, collected on 13 September 1951 by A. Hoogerwerf (No. 130);  
 MZB 20949, ♀, Legon Kadam, Panaitan Is., collected on 16 September 1951 by A. Hoogerwerf (No. 137);  
 MZB 20950, ♂, Legon Kadam, Panaitan Is., alt. 0 - 100 m, collected on 17 September 1951 by A. Hoogerwerf (No. 163);  
 MZB 20951, ♂, Legon Kadam, Panaitan Is., alt. 0 - 50 m, collected on 18 September 1951 by A. Hoogerwerf (No. 170);  
 MZB 20953, sex?, Legon Kadam, Panaitan Is., collected on 19 September 1951 by A. Hoogerwerf (No. 189);  
 MZB 20954, ♀, Legon Kadam, Panaitan Is., collected on 19 September 1951 by A. Hoogerwerf (No. 190);  
 MZB 20955, ♂, Legon Kadam, Panaitan Is., alt. 0 - 30 m, collected on 18 September 1951 by A. Hoogerwerf (No. 169);  
 MZB 20956, ♂, Tanjung Parat, Panaitan Is., collected on 22 September 1951 by A. Hoogerwerf (No. 202);  
 MZB 20957, ♂, Tanjung Parat, Panaitan Is., collected on 22 September 1951 by A. Hoogerwerf (No. 201).

*Peters' Check-list*, 11, 1986, p. 184 (Panaitan Is., western Java): *Orthotomus sepium sundaicus* Hoogerwerf, 1962

*Howard & Moore Compl. Checklist*, 2003, p. 564: *Orthotomus sepium sundaicus* Hoogerwerf, 1962

Remarks:

- a. Two paralectotypes (listed as syntypes by Dekker 2003: 60) are in RMNH:
  1. RMNH 27906 (*formerly* MZB 20935), ad. ♀, Ciharashas, Prinsen (= Panaitan) Is., collected on 5 September 1951 by A. Hoogerwerf (No. 69); and
  2. RMNH 27907 (*formerly* MZB 20938), ad. ♂, Bivak II, Prinsen (= Panaitan) Is., collected on 8 September 1951 by A. Hoogerwerf (No. 92).

- b. We could not trace where one of the paralectotype specimen is located, *i.e.*:  
 MZB 20939, ♀, Bivak II, Panaitan Is., alt. 0 m, collected on 9 September 1951 by A. Hoogerwerf (No. 102).

#### Family Muscicapidae

##### *Niltava banyumas mardii* Hoogerwerf, 1962 (Pl. IV, Fig. 1)

*Ardea*, 50 (3 4), 1962c: p. 190. The description was based on a total of 22 specimens (15♂♂ and 7♀♀) from Prinsen (= Panaitan) Is., Sunda Strait. Two of these specimens, MZB 21018 (♂) and MZB 21026 (♀), were designated as "type" by Hoogewerf. We consider there are 24 (15♂♂, 7♀♀, 1 juv. ♀, & 1 juv. sex not indicated) specimens in the type series, *i.e.* specimens MZB 21013 - 21036.

##### *Lectotype:*

MZB 21018, ♂, Ciharashas, Prinsen (= Panaitan) Is., West Java, collected on 2 September 1951 by A. Hoogerwerf (No. 19).

*Measurements of the lectotype (length in mm & weight in gr):* wing 75.8, tail 61.2, culmen broken, tarsus 16.5, and weight 16.8.

*Collector's label contains the following information (in Dutch):* "Indon. naam [Indon. name] Tila belau; oog donker bruin [eye dark brown]; snavel zwart [bill black]; poten licht olijfbruin [feet light olive brown], gew[icht] [weight] 16.8 gr."

##### *Paralectotypes* (20):

MZB 21014, ♀, Ciharashas, Panaitan Is., alt. 0 - 20 m, collected on 2 September 1951 by Madi (No. 6);

MZB 21016, ♂, Ciharashas, Panaitan Is., collected on 2 September 1951 by Madi (No. 9);

MZB 21017, ♂, Ciharashas, Panaitan Is., alt.0 - 20 m, collected on 2 September 1951 by Madi (No. 10);

MZB 21019, ♂, Ciharashas, Panaitan Is., alt. 0 - 20 m, collected on 2 September 1951 by A. Hoogerwerf (No. 20);

MZB 21020, ♂, Ciharashas, Panaitan Is., alt. 0 - 25 m, collected on 3 September 1951 by A. Hoogerwerf (No. 36);

MZB 21022, ♂, Ciharashas, Panaitan Is., alt. 0 - 20 m, collected on 5 September 1951 by A. Hoogerwerf (No. 62);

MZB 21023, ♂, Ciharashas, Panaitan Is., alt 0 - 20 m, collected on 5 September 1951 by A. Hoogerwerf (No.63);

MZB 21024, ♂, Ciharashas, Panaitan Is., alt. 0 - 20 m, collected on 5 September 1951 by A. Hoogerwerf (No. 64);  
 MZB 21025, ♂, Ciharashas, Panaitan Is., alt. 0 - 20 m, collected on 5 September 1951 by A. Hoogerwerf (No. 65);  
 MZB 21026, ♀, Ciharashas, Panaitan Is., alt. 0 - 20 m, collected on 5 September 1951 by A. Hoogerwerf (No. 72);  
 MZB 21027, ♀, Bivak II, alt. 0 - 80 m, Panaitan Is., collected on 8 September 1951 by A. Hoogerwerf (No. 91);  
 MZB 21028, ♂, Bivak II, alt. 0 - 50 m, Panaitan Is., collected on 12 September 1951 by A. Hoogerwerf (No. 111);  
 MZB 21029, ♂, Bivak II, alt. 0 - 50 m, Panaitan Is., collected on 12 September 1951 by A. Hoogerwerf (No. 112);  
 MZB 21030, ♀, Bivak II, alt. 0 - 50 m, Panaitan Is., collected on 12 September 1951 by A. Hoogerwerf (No. 113);  
 MZB 21031, juv., sex?, Bivak II, alt. 0 - 20 m, Panaitan Is., collected on 13 September 1951 by A. Hoogerwerf (No. 126);  
 MZB 21032, juv. ♀, Bivak II, alt. 0 - 20 m, Panaitan Is., collected on 13 September 1951 by A. Hoogerwerf (No. 127);  
 MZB 21033, ♀, Bivak II, alt. 0 - 20 m, Panaitan Is., collected on 13 September 1951 by A. Hoogerwerf (No. 125);  
 MZB 21034, ♂, Legon Kadam, Panaitan Is., alt. 0 - 100 m, collected on 17 September 1951 by A. Hoogerwerf (No. 162);  
 MZB 21035, ♂, Tanjung Kadam, alt. 0 - 30 m, Panaitan Is., collected on 18 September 1951 by A. Hoogerwerf (No. 168);  
 MZB 21036, ♀, Legon Parat, Panaitan Is., collected on 26 September 1951 by A. Hoogerwerf (No. 243).

*Peters' Check-list*, 11, 1986, p. 367 (Central and eastern Java): *Niltava banyumas banyumas* (Horsfield)

*Howard & Moore Compl. Checklist*, 2003, p. 696: *Cyornis banyumas banyumas* (Horsfield, 1821).

Remarks:

- a. Hoogerwerf (1962c: 192) stated that this new subspecies is named after one of the senior taxidermists at MZB. The name of the senior taxidermist, who was with Hoogerwerf in the field at that time was Madi (*not* Mardi). Five paralectotypes (MZB 21013 - MZB 21017) were collected by Madi;
- b. The Venetian Blue colour (Color 168B, Smithe, 1975) of the forehead feathers of *banyumas* and *cantatrix* (= *liga*) are more pronounced than



those of *mardii*. Therefore, we agree with Hoogerwerf (1962c: p. 190) that the population of the Hill Blue-flycatcher of Panaitan Is. is *Niltava banyumas mardii* Hoogerwerf, 1962. It should be noted, that the tips of all culmens of *N. b. mardii* collected by Hoogerwerf and Madi from Panaitan Is. in September 1951, which are deposited in the collection of MZB are broken.

- c. Three paralectotypes (listed as syntypes by Dekker 2003: 66) are in RMNH:
1. RMNH 27882 (formerly MZB 21013), ad. ♂, Ciharashas, Prinsen (= Panaitan) Is., W Java, collected on 1 September 1951 by Madi (No. 1);
  2. RMNH 27883 (formerly MZB 21015), ad. ♀, Ciharashas, Prinsen (= Panaitan) Is., W Java, alt. 0 - 20 m, collected on 2 September 1951 by Madi (No. 7); and
  3. RMNH 27884 (formerly MZB 21021), ad. ♂, Ciharashas, Prinsen (= Panaitan) Is., W Java, alt. 0 - 20 m, collected on 4 September 1951 by A. Hoogerwerf (No. 44).

#### Family Nectarinidae

##### *Anthreptes singalensis bantenensis* Hoogerwerf, 1967 (Pl. IV, Fig. 2)

*Bull. British Orn. Cl.*, 87 (1), 1967: p. 7. The description was based on nine (6♂♂, 1 juv. ♂, & 2 juv. ♀♀) specimens collected from Ujung Kulon, W Java. Hoogerwerf mentioned that 6♂♂ (p. 9) and 1 juv. ♀ (p. 10) were measured. One specimen was designated as "type".

##### *Holotype:*

MZB 23859, ♂, Ujung Kulon, Cibunar, W. Java, collected on 27 July 1955 by A. Hoogerwerf (No. 555).

*Measurements of the holotype (length in mm & weight in gr):* wing 53.7, tail 41.8, culmen 23.6, tarsus 20.2, and weight 61.

*On the field label are written:* "bill black, feet dark olive grey, eye darkbrown, tes[es] very small oblong light yellow".

##### *Paratypes (8):*

MZB 7347, juv. ♀, Cikujang, Cemara, Banten, W Java, collected on 28 July 1932 by Madzoed (No. 7);

MZB 7348, ♂, Cikujang, Cemara, Banten, W Java, collected on 28 July 1932 by Madzoed (No. 6);

MZB 23855, ♂, Tanjung Alang-alang, Ujung Kulon, W Java, collected on 10 July 1955 by A. Hoogerwerf (No. 383);

MZB 23856, ♂, Cigeunteur, Ujung Kulon, W Java, collected on 14 July 1955 by A. Hoogerwerf (No. 431);

MZB 23858, juv. ♀, Cibunar, Ujung Kulon, W Java, collected on 27 July 1955 by A. Hoogerwerf (No. 554);

MZB 23860, ♂, Cidaon, Ujung Kulon, W Java, collected on 28 July 1955 by A. Hoogerwerf (No. 568);

MZB 23861, ♂?, Cikelapabeureum, Westcoast, Ujung Kulon, W Java, collected on 30 July 1955 by A. Hoogerwerf (No. 585);

MZB 23862, ♂, Cikelapabeureum, Westcoast, Ujung Kulon, W Java, collected on 30 July 1955 by A. Hoogerwerf (No. 586).

*Peters' Check-list*, 12, 1967, p. 216 (Banten region, **extreme western Java**):

***Anthreptes singalensis bantenensis*** Hoogerwerf (1967)

*Howard & Moore Compl. Checklist*, 2003, p. 704: ***Chalcoparia singalensis bantenensis*** Hoogerwerf, 1967

Remarks:

We could not trace where one of the paratype is located, *i.e.*:

MZB 23857, ♂, Cibunar, Ujung Kulon, W Java, collected on 27 July 1955 by A. Hoogerwerf (No. 553).

#### Family Estrildidae

***Lonchura punctulata baweana*** Hoogerwerf, 1963 (Pl. IV, Fig. 3)

*Bull. British Orn. Cl.*, 83 (2), 1963a: p. 38. A total of eight specimens (1♂, 1 juv. ♂ & 6♀♀) collected from Bawean Is. were measured. **Three** of these specimens, MZB 5562 (♂), MZB 22955 (juv. ♂) and MZB 22957 (♀), were designated as types.

*Lectotype*:

MZB 5562, ♂, South Bawean Is., Java Sea, collected on 8 May 1928 by P.F. Franck (No.22).

*Measurements of the lectotype (length in mm)*: wing 50.7, tail 35.6, and culmen 11.0

*On the specimen card MZB 5562 are written (in Dutch)*: “iris = bruin” [iris = brown]; “ooglid = grijsbruin” [eyelid = grayish brown]; “snavel = aan de basis grijsblauw, verder zwartbruin” [bill = grayish blue at the base, the rest dark brown]; “onder snavel = grijsblauw” [lower bill

= grayish blue]; “pooten = grijsblauw” [feet = grayish blue], “zoolen = grijs” [soles = grey].

*Paralectotypes* (20):

MZB 5563, ♀, Bawean Is., collected on 8 May 1928 by P.F. Franck (No. 23);

MZB 5564, ♂, Bawean Is., collected on 8 May 1928 by P.F. Franck (No. 24);

MZB 22955, juv ♂, Mt. Bulu, Bawean Is., collected on 5 June 1954 by A. Hoogerwerf (No. 109);

MZB 22956, ♀, Sangkapura, Bawean Is., collected on 11 June 1954 by A. Hoogerwerf (No. 195);

MZB 22957, ♀, Sangkapura, Bawean Is., collected on 11 June 1954 by A. Hoogerwerf (No. 199);

MZB 22958, ♂, Sangkapura, Bawean Is., collected on 11 June 1954 by A. Hoogerwerf (No. 200);

MZB 22959, juv ♀, Sangkapura, Bawean Is., collected on 11 June 1954 by A. Hoogerwerf (No. 201);

MZB 22960, juv ♀, Sangkapura, Bawean Is., collected on 11 June 1954 by A. Hoogerwerf (No. 202);

MZB 22961, ♀, Cott. Muara, South Bawean, collected on 26 June 1954 by A. Hoogerwerf (No. 318);

MZB 22962, ♀, Cott. Muara, South Bawean, collected on 26 June 1954 by A. Hoogerwerf (No. 319);

MZB 22964, juv ♀, Cott. Muara, South Bawean, collected on 26 June 1954 by A. Hoogerwerf (No. 321);

MZB 22965, juv ♀, Cott. Muara, South Bawean, collected on 26 June 1954 by A. Hoogerwerf (No. 322);

MZB 22966, juv ♀, Cott. Muara, South Bawean, collected on 26 June 1954 by A. Hoogerwerf (No. 323);

MZB 22968, juv, Cott. Muara, South Bawean, collected on 26 June 1954 by A. Hoogerwerf (No. 325);

MZB 22969, juv ♂, Cott. Muara, South Bawean, collected on 2 July 1954 by A. Hoogerwerf (No. 382);

MZB 22970, juv ♀, Cott. Muara, South Bawean, collected on 2 July 1954 by A. Hoogerwerf (No. 383);

MZB 22971, juv ♀, Cott. Muara, South Bawean, collected on 2 July 1954 by A. Hoogerwerf (No. 384);

MZB 22972, juv ♀, Cott. Muara, South Bawean, collected on 2 July 1954 by A. Hoogerwerf (No. 385).

*Peters' Check-list*, 14, 1968, p. 376 (Bawean Is., Java Sea): *Lonchura punctulata baweana* Hoogerwerf, 1963.

*Howard & Moore Compl. Checklist*, 2003, p. 735: *Lonchura punctulata baweana* Hoogerwerf, 1963.

Remarks:

- a. One paralectotype is in RMNH (Dekker *in litt.*):  
RMNH 27921 (formerly MZB 5557), ♀, Bawean Is., collected on 7 May 1928 by P.F. Franck (No. 17)
- b. We could not trace where two of the paralectotype specimens are located, *i.e.*:
  1. MZB 22963, juv ♀, Cott. Muara, South Bawean, collected on 26 June 1954 by A. Hoogerwerf (No. 320);
  2. MZB 22967, ♀, Cott. Muara, South Bawean, collected on 26 June 1954 by A. Hoogerwerf (No. 324).

#### Family Dicruridae

*Dicrurus hottentottus faberi* Hoogerwerf, 1962 (Pl. IV, Fig. 4)

*Ardea*, 50 (3 4), 1962c: p. 187. A total of 16 specimens (8♂♂ & 8♀♀) from Prinsen (= Panaitan) Is., Sunda Strait were measured. Two of these specimens, MZB 21155 (♂) and MZB 21163 (♀), were designated as "type", respectively.

*Lectotype*:

MZB 21155, ♂, Ciharashas, Prinsen (= Panaitan) Is., West Java, collected on 2 September 1951 by A. Hoogerwerf (No. 23).

*Measurements of the lectotype (length in mm & weight in gr)*: wing 153.5, outer tail 129.0, inner tail 117.0, culmen 37.0, tarsus 26.5, and weight 102.0.

*Collector's label contains the following information (in Dutch)*: "Indon. naam [Indon. name] Saeran gunting gunung; oog crème wit [eye creamy white]; snavel zwart [bill black]; poten zwart [feet black]; gew[icht] [weight] 102 gr."

*Paralectotypes* (13):

MZB 21152, ♀, Ciharashas, Panaitan Is., Sunda Strait, collected by Madi (No. 2) on 2 September 1951;

MZB 21154, ♀, Panaitan Is., Sunda Strait, collected on 2 September 1951 by A. Hoogerwerf (No. 22);  
 MZB 21156, ♀, Panaitan Is., Sunda Strait, collected on 2 September 1951 by A. Hoogerwerf (No. 24);  
 MZB 21157, ♂, Panaitan Is., Sunda Strait, collected on 2 September 1951 by A. Hoogerwerf (No. 25);  
 MZB 21158, ♂, Panaitan Is., Sunda Strait, collected on 2 September 1951 by A. Hoogerwerf (No. 26);  
 MZB 21159, ♀, Panaitan Is., Sunda Strait, collected on 3 September 1951 by A. Hoogerwerf (No. 27);  
 MZB 21160, ♂, Panaitan Is., Sunda Strait, collected on 3 September 1951 by A. Hoogerwerf (No. 28);  
 MZB 21161, ♂, Panaitan Is., Sunda Strait, collected on 3 September 1951 by A. Hoogerwerf (No. 29);  
 MZB 21162, ♀, Panaitan Is., Sunda Strait, collected on 6 September 1951 by A. Hoogerwerf (No. 78);  
 MZB 21163, ♀, Panaitan Is., Sunda Strait, collected on 8 September 1951 by A. Hoogerwerf (No. 87);  
 MZB 21164, ♂, Panaitan Is., Sunda Strait, collected on 12 September 1951 by A. Hoogerwerf (No. 118);  
 MZB 21165, ♂, Panaitan Is., Sunda Strait, collected on 13 September 1951 by A. Hoogerwerf (No. 121);  
 MZB 21166, ♀, Panaitan Is., Sunda Strait, collected on 13 September 1951 by A. Hoogerwerf (No. 122).

*Peters' Check-list*, 15, 1962, p. 152 (Solombo Besar Is., Kangean Isls., Nusa Penida Is., Bali, eastern end of Java, and the Thousands Isls. off western end of Java): *Dicrurus hottentottus jentinki* (Vorderman)

*Howard & Moore Compl. Checklist*, 2003: not listed

Remarks:

- a. Based on the colour of the plumage and the measurements, it is difficult to separate *jentinki* from *faberi*. Therefore, it might be that the Drongo from Panaitan Is. is also *D. h. jentinki* (Vorderman, 1893);
- b. Two paralectotypes are in RMNH (Dekker *in litt.*):
  1. RMNH 27927 (*formerly* MZB 21153), ♂, Ciharashas, Panaitan Is., Sunda Strait, collected on 2 September 1951 by Madi (No. 3), and
  2. RMNH 27928 (*formerly* MZB 21167), ♀, Panaitan Is., Sunda Strait, collected on 2 9 September 1951 by A. Hoogerwerf (No. 261).

## ACKNOWLEDGMENTS

We are grateful to E.C. Dickinson (Trust for Oriental Ornithology), M. Indrawan (Univ. of Indonesia), P. Ng (Natl. Univ. of Singapore), and R.B. Payne (Univ. of Michigan Museum of Zool.) for reading the manuscript and offering many helpful comments. Many thanks to R.W.R.J. Dekker (NNM), E.C. Dickinson, and D.M. Prawiradilaga (MZB) for providing the references needed, to G. Djanubudiman and M. Irham for preparing the map, and to Arief Supriatna for assistance with photography.

## REFERENCES

- Dekker, R.W.R.J. 2003. Type specimens of birds in the National Museum of Natural History, Leiden. Part 2. Passerines: Eurylaimidae - Eopsaltriidae (Peters's sequence). *NNM Technical Bull.*, 6 (CD-ROM Edition): 5.16 MB.
- Forshaw, J.M. 1978. *Parrots of the world*. Second (Revised) Ed. Landsowne Edition, Melbourne: 616 pp.
- Hoek Ostende, L.W. van den, R.W.R. Dekker, & G.O. Keijl. 1997. Type specimens of birds in the National Museum of Natural History, Leiden. Part 1. Non-Passerine. *Technical Bull.*, 1: 248 pp.
- Hoogerwerf, A. 1962a. Ornithological notes on the Sunda Strait area and the Karimundjawa, Bawean and Kangean Islands. *Bull. British Orn. Cl.*, 82 (8): 142-154.
- Hoogerwerf, A. 1962b. On *Aegithina tiphia* (Linn.), the Common lora, from Ujung Kulon, western Java. *Bull. British Orn. Cl.*, 82 (9): 160-165.
- Hoogerwerf, A. 1962c. Some ornithological notes on the smaller islands around Java (with the descriptions of seven new subspecies). *Ardea*, 50 (3-4): 180-206.
- Hoogerwerf, A. 1962d. Notes on Indonesian birds with special reference to the avifauna of Java and the surrounding small islands (I). *Treubia*, 26 (1): 11-38.
- Hoogerwerf, A. 1963a. A new race of the Spotted Munia, *Lonchura punctulata* (Linn.). *Bull. British Orn. Cl.*, 83 (2): 36-40.
- Hoogerwerf, A. 1963b. On the Yellow-vented Bulbul, *Pycnonotus goiavier* (Scop.). *Bull. British Orn. Cl.*, 83 (3): 56-60.
- Hoogerwerf, A. 1963. The Golden-backed Woodpecker, *Chrysocolaptes lucidus* (Scopoli). *Bull. British Orn. Cl.*, 83 (6): 112-114.

- Hoogerwerf, A. 1965. *Pycnonotus plumosus* subspp. with the description of a new subspecies from Bawean Island. *Bull. British Orn. Cl.*, 85 (3): 47-53.
- Hoogerwerf, A. 1967. A new subspecies of the Ruby-cheek (*Anthreptes singalensis*) (Gmelin) from Java. *Bull. British Orn. Cl.*, 89 (1): 5-10.
- Howard and Moore Complete Checklist of the birds of the world, The. Revised and enlarged 3<sup>rd</sup> Edition. Edited by Edward C. Dickinson. 2003. Christopher Helm, London: 1039 pp.
- International Commission on Zoological Nomenclature. 1961. *International Code of Zoological Nomenclature adopted by the XV International Congress of Zoology* [London, July 1958]. First Edition. Int. Trust for Zool. Nomencl., London: xviii + 176 pp.
- International Commission on Zoological Nomenclature. 1964. *International Code of Zoological Nomenclature* [adopted by the XVIth International Congress of Zoology, Washington, August 1963]. Second Edition. Int. Trust for Zool. Nomencl., London: xix + 176 pp.
- International Commission on Zoological Nomenclature. 1999. *International Code of Zoological Nomenclature adopted by the International Union of Biological Sciences* [XXIII General Assembly IUBS, Canberra, October 1988]. Fourth Edition. Int. Trust for Zool. Nomencl., London: xxix + 306 pp.
- Mees, G.F. 1986. A list of the birds recorded from Bangka Island, Indonesia. *Zool. Verh. Leiden*, No. 232: 1-176.
- Mees, G.F. 1996. *Geographical variation in birds of Java*. Publ. Nuttall Orn. Cl., No. 26. Cambridge, MA: viii + 119 pp.
- Peters' Check-list of birds of the world*. Vol. 2. Reprinted ed. (1976: xvii + 401); Vol. 3. Reprinted ed. (1976: xiii + 311); Vol. 4. (1940: vii + 291); Vol. 6. (1948: xi + 259); Vol. 9. (1960: xii + 506); Vol. 10. (1964: ix + 502); Vol. 11. Edited by E. Mayr & G.W. Cottrell (1986: xii + 638); Vol. 12. Edited by R.A. Paynter, Jr. (1967: ix + 495); Vol. 14 Edited by R.A. Paynter, Jr. (1968: x + 433); Vol. 15. Edited by E. Mayr & J.C. Greenway, Jr. (1962: vi + 315). Museum Comp. Zool./Harvard Univ. Press, Cambridge, MA.
- Smithe, F.B. 1975. *Naturalist's color guide*. The American Mus. Nat. Hist., New York:

## Plate I



Fig. 1. *Turnix suscitator baweanus* Hoogerwerf, 1962 (Lectotype)



Fig. 2. *Treron vernans karimuniensis* Hoogerwerf, 1962 (Lectotype)



Fig. 3. *Psittacula alexandri kangeanensis* Hoogerwerf, 1962 (Lectotype)



Fig. 4. *Batrachostomus javensis longicaudatus* Hoogerwerf, 1962 (Holotype)



Plate II



Fig. 1. *Chrysocolaptes lucidus kangeanensis* Hoogerwerf, 1963 (Lectotype)



Fig. 2. *Anthus novaesealandiae idjenensis* Hoogerwerf, 1962 (Lectotype)



Fig. 3. *Pycnonotus goiavier karimuniensis* Hoogerwerf, 1963 (Lectotype)



Fig. 4. *Pycnonotus plumosus sibergi* Hoogerwerf, 1965 (Lectotype)

## Plate III



Fig. 1. *Aegithina tiphia djungkalensis* Hoogerwerf, 1962 (Lectotype)



Fig. 2. *Copsychus malabaricus mirabilis* Hoogerwerf, 1962 (Lectotype)



Fig. 3. *Orthotomus sepium baweanus* Hoogerwerf, 1962 (Lectotype)

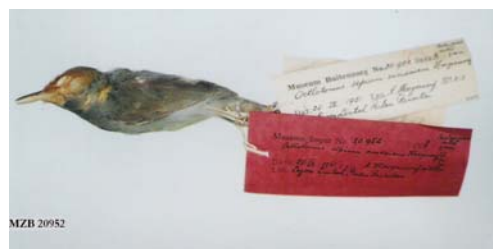


Fig. 4. *Orthotomus sepium sundaicus* Hoogerwerf, 1962 (Lectotype)

Plate IV



Fig. 1. *Niltava banyumas mardii* Hoogerwerf, 1962 (Lectotype)



Fig. 2. *Anthreptes singalensis bantenensis* Hoogerwerf, 1967 (Holotype)



Fig. 3. *Lonchura punctulata baweana* Hoogerwerf, 1963 (Lectotype)



Fig. 4. *Dicrurus hottentottus faberi* Hoogerwerf, 1962 (Lectotype)